

# The Salvo Pocket Guide



The destination for reuse [SalvoWEB.com](http://SalvoWEB.com)



BCA  
MATÉRIAUX  
ANCIENS  
*authenticité & caractère*

RECLAIMED FLOORBOARDS



RECLAIMED STONE FLOORING



RECLAIMED TERRA-COTTA TILES



RECLAIMED PAVING



RECLAIMED PARQUET FLOORING



WALL CLADDING / STONE WALLS



FRENCH FIREPLACES



GARDEN ARCHITECTURAL SALVAGE



INTERNATIONAL DELIVERY



English language enquiries :  
+33 (0)6 07 01 90 26  
david.bca@mac.com



FREE QUOTE

## Editors' Letter

Our aim in producing this guide is to champion reuse and share the joy of designing and building with what is already out there.

This is your sourcebook for the reuse lifestyle. Discover the longstanding community of Salvo Code businesses supplying everything from oak framed buildings to bricks, to architectural antiques to mid-mod lighting for everything to build and dress your home.

Shopping secondhand is trending, but masses of perfectly good, and in some cases better than new architectural elements, building materials and interiors are still downcycled, recycled or wasted.

This guide is designed to fit as comfortably in the pocket of a salvage newbie to seasoned designers looking to engage with the reuse economy.

Find your local reclamation suppliers and get handy hints to invigorate your ideas and start your reclaimed renovation.

Becky Moles, Sara Morel and the Salvo team

SalvoWEB.com

@salvoweb



bca-antiquematerials.com





# RETROUVIUS

Rescuers of Salvaged Materials  
Architectural & Interior Designers

[www.retrouvius.com](http://www.retrouvius.com)

+44 (0) 20 8960 6060 London NW10 5NS

## Contents

### 6 What is the Salvo Code?

Discover the peer-reviewed community

### 8 Salvo

The destination of reuse

### 10 Directory by category

Source everything from fine architectural antiques to reclaimed building materials

### 48 Theft alerts

### 49 Deconstruction & Dismantling

### 51 Directory by location

Find your local Salvo Code supplier

Reclaim, Reuse, Repeat since 1991.



© Salvo 2024

*The Salvo Pocket Guide, third edition*

*Printed locally by Toucan Print on FSC papers using eco-friendly inks. Cover artwork from Salvo magazine Autumn 2000 depicting an embossed pattern glass with shell motif, possibly dating from Victorian times by Chance & Co.*



## What is the Salvo Code?

The Salvo Code is a world-leading assurance for good practice in sourcing for businesses that buy and sell architectural salvage, antiques, garden ornament and reclaimed building material. The Salvo Code aims to give people greater confidence, in particular, that items which they buy have not been stolen or removed from protected historic buildings without permission.

Most dealers have sensible buying procedures, but the Salvo Code is more formal, understandable and obvious to buyers and sellers. The Code flags that a business is part of the peer-reviewed community and meets the highest standards.



*The Salvo Code crane logo is a symbol of vigilance. Ancient legend has it that a crane stands guard holding a stone in its claw, which drops to wake it if the crane falls asleep.*



*Clockwise from top left:  
Salvo Code members  
Catchpole & Rye,  
Conservation Building  
Supplies, Retrouvius, The  
Architectural Forum &  
BCA Matériaux Anciens*



# SALVO

Reuse for the world you want

Salvo matches something reclaimed or recrafted with someone who wants to reuse it.

Our story began as a reaction to the UK demolitions of the 60s and 70s when masses of reclaimable materials were destroyed. This needless waste inspired the creation of pioneering businesses dedicated to rescuing materials, and the reclamation scene was born.

One of those early businesses was Walcot Reclamation, a salvage yard co-founded by Thornton Kay. In 1991, he left to launch Salvo to reduce the amount of salvageable materials that ended up in landfill.

Initially, Salvo was a magazine and directory of suppliers to make it easier for people to buy architectural salvage.

Salvo soon grew into a movement, and the Salvo Code was established to increase transparency and buyer confidence.

Today, it is the destination for reuse, with a marketplace and worldwide directory of reclamation-friendly businesses.

Salvage has always been appreciated for its connection with history, but it also offers significant social and environmental benefits. Our newly launched Truly Reclaimed™ standard celebrates these benefits and shares the stories behind real reuse.

SalvoWEB.com

@salvoweb

Reclaim, Reuse, Repeat since 1991.





*Above: Monumental Antique 18th Century French Stone Chimneypiece currently for sale in the Salvo Shop from The Architectural Forum*

## FINE ARCHITECTURAL ANTIQUES, STATUARY & ANTIQUE GARDEN ORNAMENT

Salvo Code dealers with items for sale for more than £10,000 such as a fine panelled room, decorative wrought iron gateway, ancient oak staircase, exquisite stone or marble chimneypiece, antique carved stone or marble conservatory statue, or an art deco parquet floor.

Simon Wharton Antiques ..... Somerset  
 Olliff's Architectural Antiques ..... Bristol  
 Rose Green Tiles & Reclamation ..... Bristol  
 Architectural Heritage ..... Gloucestershire  
 Original Architectural Antiques ..... Gloucestershire  
 Ronson Reclaim ..... Gloucestershire  
 Winchcombe Reclamation ..... Gloucestershire  
 LASSCO Three Pigeons ..... Oxfordshire  
 Antique Buildings ..... Surrey  
 Nicholas Gifford-Mead Antiques ..... London  
 Westland London ..... London  
 Architectural Forum ..... Hertfordshire  
 Architectural Salvage Source ..... Hertfordshire  
 English Salvage ..... Herefordshire  
 UK Architectural Antiques ..... Staffordshire  
 Nostalgia ..... Cheshire  
 WillMow Reclamation ..... Greater Manchester  
 Abacus Stone Sales ..... Yorkshire  
 Wilson Reclamation Services ..... Cumbria  
 Wilsons Yard ..... Co Down

BCA Matériaux Anciens ...Loire, Normandy, France  
 Barbara Israel Garden Antiques ... New York, USA



# FIREPLACES, CHIMNEYPieces, GRATES & fire tools

Stax Reclamation .....	Cornwall
Bath Reclamation .....	Somerset
Simon Wharton Antiques .....	Somerset
South West Reclamation .....	Somerset
Ace Reclamation .....	Dorset
Dorset Reclamation .....	Dorset
Olliff's Architectural Antiques .....	Bristol
Rose Green Tiles & Reclamation .....	Bristol
Original Architectural Antiques .....	Gloucestershire
Ronson Reclaim .....	Gloucestershire
Winchcombe Reclamation .....	Gloucestershire
LASSCO Three Pigeons .....	Oxfordshire
J Brant Reclamation .....	Berkshire
Romsey Reclamation .....	Hampshire
Symonds Salvage .....	Kent
Nicholas Gifford-Mead Antiques .....	London
Retrouvius .....	London
Westland London .....	London
Architectural Forum .....	Hertfordshire
Architectural Salvage Source .....	Hertfordshire
AB Reclamation .....	Suffolk
Treesave Reclamation .....	Suffolk
Mongers Architectural Salvage .....	Norfolk
Morways Reclaimers .....	Norfolk
Real Original .....	Norfolk
English Salvage .....	Herefordshire
Coventry Demolition Company .....	Warwickshire
Warwick Reclamation .....	Warwickshire
UK Architectural Antiques .....	Staffordshire
Cawarden .....	Staffordshire
Ransfords .....	Northamptonshire

Watling Reclamation .....	Northamptonshire
Cheshire Demolition & Excavation .....	Cheshire
Nostalgia .....	Cheshire
Reclaimed World .....	Cheshire
Insitu Architectural Salvage .....	Manchester
Haes Antiques .....	Lancashire
Wilson Reclamation Services .....	Cumbria
Olde Worlde Fireplaces .....	Tyne & Wear
Teesside Architectural Salvage .....	Teesside
Wilsons Yard .....	Co Down

BCA Matériaux Anciens .. Loire, Normandy, France

## HANDY HINT

"Good fireplace dealers should know what period and style is suitable for your home. I use Rightmove frequently to research which fireplaces are original to a clients street and present similar options." Nadine, The Architectural Forum



@thearchitecturalforum



# BATHROOMS

for TOWEL RAILS please see the RADIATORS section

Baths, basins, taps, wc pans, cisterns, vanity mirrors, bidets from early times through to 20th century Art Deco or later. Buyers: check to see if items have been restored and repaired, tested, with metallic lead removed, and adapted to fit modern plumbing systems (most will have). Ask your plumber if they can fit reclaimed items before you hire them. The dealer who supplies you may know of reclamation friendly plumbers, so ask when you buy. For plumbers who need assurance about how old fittings comply with water bylaws, please ask for a factsheet.

The Original Bath Company .....	Devon
Ace Reclamation .....	Dorset
Dorset Reclamation .....	Dorset
Olliff's Architectural Antiques .....	Bristol
Rose Green Tiles & Reclamation .....	Bristol
Catchpole & Rye .....	Kent & London
Symonds Salvage .....	Kent
Architectural Forum .....	Hertfordshire
AB Reclamation .....	Suffolk
Treesave Reclamation .....	Suffolk
Mooney Demolition .....	Norfolk
Mongers Architectural Salvage .....	Norfolk
English Salvage .....	Herefordshire
Coventry Demolition Company .....	Warwickshire
UK Architectural Antiques .....	Staffordshire
Nostalgia .....	Cheshire
Insitu Architectural Salvage .....	Manchester
Wilson Reclamation Services .....	Cumbria
Wilsons Yard .....	Co Down

BCA Matériaux Anciens . Loire, Normandy, France

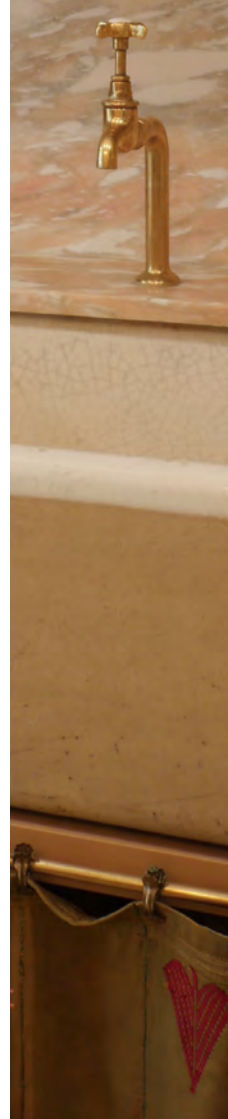
# KITCHENS & accessories

Stax Reclamation .....	Cornwall
Trinity Marine .....	Devon
Ace Reclamation .....	Dorset
Dorset Reclamation .....	Dorset
Olliff's Architectural Antiques .....	Bristol
LASSCO Three Pigeons .....	Oxfordshire
The Vintage Fridge Company .....	Surrey
Woodstoneuk .....	Surrey
Symonds Salvage .....	Kent
Retrouvius .....	London
Architectural Forum .....	Hertfordshire
AB Reclamation .....	Suffolk
Mongers Architectural Salvage .....	Norfolk
Mooney Demolition .....	Norfolk
Real Original .....	Norfolk
English Salvage .....	Herefordshire
Coventry Demolition Company .....	Warwickshire
UK Architectural Antiques .....	Staffordshire
Watling Reclamation .....	Northamptonshire
Insitu Architectural Salvage .....	Manchester
Wilsons Reclamation Services .....	Cumbria
Wilsons Yard .....	Co Down

## HANDY HINT

"From the walls to the worktop and the floor, your kitchen renovation may offer the perfect playground to use reclaimed materials. It is an ideal space to be ambitious as most of us spend a lot of time in our kitchens, and reclaimed elements have already passed the test of time, so they can offer the quality you are looking for in high-impact areas."

Sara, Reclaimed Woman





## BYGONES, PROPS & COLLECTABLES

Stax Reclamation .....	Cornwall
Trinity Marine .....	Devon
Ace Reclamation .....	Dorset
Dorset Reclamation .....	Dorset
Olliff's Architectural Antiques .....	Bristol
Rose Green Tiles & Reclamation .....	Bristol
Ronson Reclaim .....	Gloucestershire
LASSCO Three Pigeons .....	Oxfordshire
J Brant Reclamation .....	Berkshire
Romsey Reclamation .....	Hampshire
Woodstoneuk .....	Surrey
Symonds Salvage .....	Kent
Retrouvius .....	London
Antiques By Design .....	Essex
Architectural Forum .....	Hertfordshire
Architectural Salvage Source .....	Hertfordshire
AB Reclamation .....	Suffolk
Treesave Reclamation .....	Suffolk
Mongers Architectural Salvage .....	Norfolk
Real Original .....	Norfolk
English Salvage .....	Herefordshire
Coventry Demolition Company .....	Warwickshire
Warwick Reclamation .....	Warwickshire
Cawarden .....	Staffordshire
UK Architectural Antiques .....	Staffordshire
Ransfords .....	Northamptonshire
Glens Reclaim .....	Derbyshire
Cheshire Demolition & Excavation.....	Cheshire
Nostalgia .....	Cheshire
Reclaimed World .....	Cheshire
Insitu Architectural Salvage .....	Manchester
Abacus Stone Sales .....	Yorkshire
Reclaimed Brick Company .....	Yorkshire
Olde Worlde Fireplaces .....	Tyne & Wear
Teesside Architectural Salvage .....	Teesside
Wilsons Yard .....	Co Down

# INSITU

Architectural Salvage

Insitumanchester.com

252 Chester Road, Manchester



Architectural salvage and classic design pieces since 1984

Architectural  
Flooring & Timber  
Furniture & Lighting  
Windows & Glass  
Radiators



+44 (0)7780 993 773

+44 (0)161 839 5525

info@insitumanchester.com



*Above: Vintage faux bamboo mirror at Insitu Architectural Salvage*

## ANTIQUÉ, VINTAGE and RECRAFTED FURNITURE, DECORATIVE ANTIQUES and MIRRORS

Stax Reclamation .....	Cornwall
Trinity Marine .....	Devon
Simon Wharton Antiques .....	Somerset
Dorset Reclamation .....	Dorset
Olliff's Architectural Antiques .....	Bristol
Ronson Reclaim .....	Gloucestershire
Winchcombe Reclamation .....	Gloucestershire
LASSCO Three Pigeons .....	Oxfordshire
Cast Iron Reclamation Company .....	Surrey
Woodstoneuk .....	Surrey
Symonds Salvage .....	Kent
Retrouvius .....	London
Westland London .....	London
Antiques By Design .....	Essex
Architectural Forum .....	Hertfordshire
Architectural Salvage Source .....	Hertfordshire
Heritage Reclamation .....	Hertfordshire
Treesave Reclamation .....	Suffolk
Mongers Architectural Salvage .....	Norfolk
Real Original .....	Norfolk
English Salvage .....	Herefordshire
Coventry Demolition Company .....	Warwickshire
Warwick Reclamation .....	Warwickshire
Cawarden .....	Staffordshire
UK Architectural Antiques .....	Staffordshire
Watling Reclamation .....	Northamptonshire
Nostalgia .....	Cheshire
Reclaimed World .....	Cheshire
Insitu Architectural Salvage .....	Manchester
Haes Antiques .....	Lancashire
Teesside Architectural Salvage .....	Teesside
Wilsons Reclamation Services .....	Cumbria
Wilsons Yard .....	Co Down

BCA Matériaux Anciens .... Loire, Normandy, France



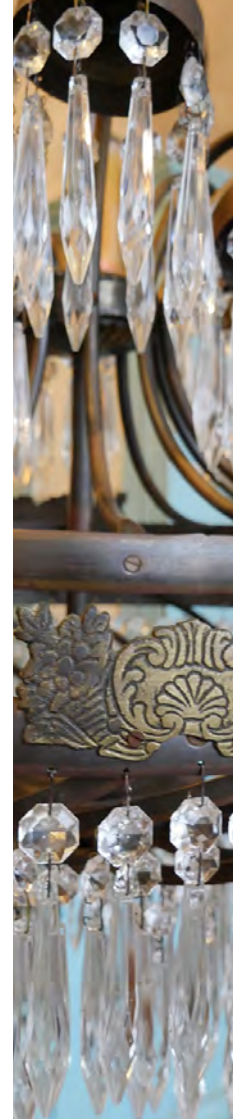
# Lighting



*Above: Vintage lighting from the collection at Haes Antiques*

# LIGHTING

Stax Reclamation .....	Cornwall
Trinity Marine .....	Devon
Ace Reclamation .....	Dorset
Dorset Reclamation .....	Dorset
Olliff's Architectural Antiques .....	Bristol
Rose Green Tiles & Reclamation .....	Bristol
Ronson Reclaim .....	Gloucestershire
LASSCO Three Pigeons .....	Oxfordshire
Cast Iron Iron Reclamation Company .....	Surrey
Woodstoneuk .....	Surrey
Retrouvius .....	London
Westland London .....	London
Antiques By Design .....	Essex
Architectural Forum .....	Hertfordshire
Architectural Salvage Source .....	Hertfordshire
Treesave Reclamation .....	Suffolk
Mongers Architectural Salvage .....	Norfolk
Real Original .....	Norfolk
English Salvage .....	Herefordshire
Coventry Demolition Company .....	Warwickshire
Warwick Reclamation .....	Warwickshire
UK Architectural Antiques .....	Staffordshire
Watling Reclamation .....	Northamptonshire
Nostalgia .....	Cheshire
Reclaimed World .....	Cheshire
Insitu Architectural Salvage .....	Manchester
Haes Antiques .....	Lancashire
Teesside Architectural Salvage .....	Teesside
Wilson Reclamation Services .....	Cumbria
Wilsons Yard .....	Co Down







*Above: An Italian carved stone wellhead  
from the collection at Architectural Heritage*

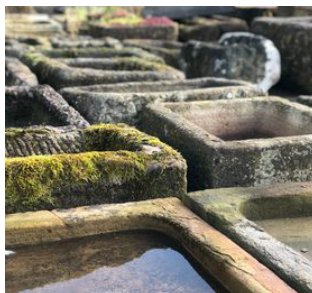
## ANTIQUE GARDEN ORNAMENT

Stax Reclamation .....	Cornwall
Bath Reclamation .....	Somerset
Simon Wharton Antiques .....	Somerset
Ace Reclamation .....	Dorset
Dorset Reclamation .....	Dorset
Olliff's Architectural Antiques .....	Bristol
Rose Green Tiles & Reclamation .....	Bristol
Architectural Heritage .....	Gloucestershire
Original Architectural Antiques .....	Gloucestershire
Ronson Reclaim .....	Gloucestershire
Winchcombe Reclamation .....	Gloucestershire
LASSCO Three Pigeons .....	Oxfordshire
J Brant Reclamation .....	Berkshire
Antique Buildings .....	Surrey
Woodlands Farm Nursery Reclamation .....	Surrey
Symonds Salvage .....	Kent
Nicholas Gifford-Mead Antiques .....	London
Westland Antiques .....	London
Antiques by Design .....	Essex
Architectural Forum .....	Hertfordshire
Architectural Salvage Source .....	Hertfordshire
AB Reclamation .....	Suffolk
Tower Reclaim .....	Suffolk
Treesave Reclamation .....	Suffolk
Mooney Demolition .....	Norfolk
Mongers Architectural Salvage .....	Norfolk
Morways Reclaimers .....	Norfolk
Real Original .....	Norfolk
English Salvage .....	Herefordshire
Coventry Demolition Company .....	Warwickshire
Warwick Reclamation .....	Warwickshire
Cawarden .....	Staffordshire
UK Architectural Antiques .....	Staffordshire
Ransfords .....	Northamptonshire
Watling Reclamation .....	Northamptonshire
Glens Reclaim .....	Derbyshire



Cheshire Demolition & Excavation ..... Cheshire  
 Nostalgia ..... Cheshire  
 Reclaimed World ..... Cheshire  
 Insitu Architectural Salvage ..... Manchester  
 WillMow Reclamation ..... Greater Manchester  
 Abacus Stone Sales ..... Yorkshire  
 Reclaimed Brick Company ..... Yorkshire  
 Wilson Reclamation Services ..... Cumbria  
 Teesside Architectural Salvage ..... Tyne & Wear  
 Wilsons Yard ..... Co Down

BCA Matériaux Anciens . Loire, Normandy, France  
 Pierre de Bourgogne ..... Tuscany, Italy  
 Barbara Israel Garden Antiques ... New York, USA



@willmowreclamation

## HANDY HINT

"When buying reclaimed water troughs and sinks, you are helping to preserve a piece of English heritage – not to mention the possibilities are truly endless, we commonly see them used as statement planters or water features!"

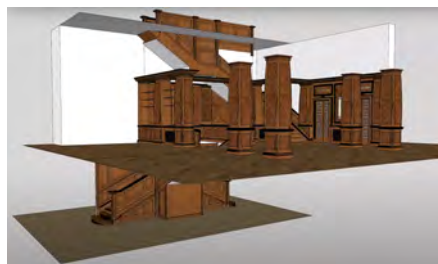
WillMow Reclamation

# STAIRCASES & STEPS

in WOOD, STONE or METAL

Architectural Heritage ..... Gloucestershire  
 Original Architectural Antiques ..... Gloucestershire  
 Ronson Reclaim ..... Gloucestershire  
 LASSCO Three Pigeons ..... Oxfordshire  
 Architectural Forum ..... Hertfordshire  
 Mongers Architectural Salvage ..... Norfolk  
 Morways Reclaimers ..... Norfolk  
 English Salvage ..... Herefordshire  
 Coventry Demolition Company ..... Warwickshire  
 UK Architectural Antiques ..... Staffordshire  
 Ransfords ..... Northamptonshire  
 Cheshire Demolition & Excavation ..... Cheshire  
 WillMow Reclamation ..... Greater Manchester  
 Abacus Stone Sales ..... Yorkshire  
 Reclaimed Brick Company ..... Yorkshire  
 Teesside Architectural Salvage ..... Teesside  
 Tradstocks ..... Stirlingshire & West Lothian  
 Wilsons Yard ..... Co Down

BCA Matériaux Anciens . Loire, Normandy, France  
 Pierre de Bourgogne ..... Tuscany, Italy



Above: Liberty's Truly Reclaimed 1920s staircases & paneled entrance hall for sale on SalvoWEB

# STATUARY

Stax Reclamation .....	Cornwall
Simon Wharton Antiques .....	Somerset
Dorset Reclamation .....	Dorset
Olliff's Architectural Antiques .....	Bristol
Rose Green Tiles & Reclamation .....	Bristol
Architectural Heritage .....	Gloucestershire
Original Architectural Antiques .....	Gloucestershire
Ronson Reclaim .....	Gloucestershire
LASSCO Three Pigeons .....	Oxfordshire
J Brant Reclamation .....	Berkshire
Nicholas Gifford-Mead Antiques .....	London
Westland London .....	London
Architectural Forum .....	Hertfordshire
Architectural Salvage Source .....	Hertfordshire
AB Reclamation .....	Suffolk
Tower Reclaim .....	Suffolk
Mongers Architectural Salvage .....	Norfolk
Morways Reclaimers .....	Norfolk
Real Original .....	Norfolk
English Salvage .....	Herefordshire
Coventry Demolition Company .....	Warwickshire
Warwick Reclamation .....	Warwickshire
UK Architectural Antiques .....	Staffordshire
Watling Reclamation .....	Northamptonshire
Nostalgia .....	Cheshire
WillMow Reclamation .....	Greater Manchester
Abacus Stone Sales .....	Yorkshire
Wilson Reclamation Services .....	Cumbria
Wilsons Yard .....	Co Down

BCA Matériaux Anciens . Loire, Normandy, France  
Barbara Israel Garden Antiques .. New York, USA

## Doors



*Above: Glazed salvaged doors in a renovation project by Retrouvius*



# DOORS & or door furniture

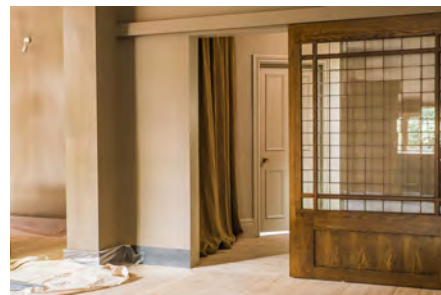
Stax Reclamation .....	Cornwall
Trinity Marine .....	Devon
Simon Wharton Antiques .....	Somerset
South West Reclamation .....	Somerset
Ace Reclamation .....	Dorset
Dorset Reclamation .....	Dorset
Olliff's Architectural Antiques .....	Bristol
Rose Green Tiles & Reclamation .....	Bristol
Original Architectural Antiques .....	Gloucestershire
Ronson Reclaim .....	Gloucestershire
LASSCO Three Pigeons .....	Oxfordshire
J Brant Reclamation .....	Berkshire
Romsey Reclamation .....	Hampshire
Symonds Salvage .....	Kent
Retrouvius .....	London
Westland London .....	London
Architectural Forum .....	Hertfordshire
Architectural Salvage Source .....	Hertfordshire
AB Reclamation .....	Suffolk
Tower Reclaim .....	Suffolk
Treesave Reclamation .....	Suffolk
Mongers Architectural Salvage .....	Norfolk
Morways Reclaimers .....	Norfolk
English Salvage .....	Herefordshire
Coventry Demolition Company .....	Warwickshire
Warwick Reclamation .....	Warwickshire
UK Architectural Antiques .....	Staffordshire
Watling Reclamation .....	Northamptonshire
Cheshire Demolition & Excavation .....	Cheshire
Reclaimed World .....	Cheshire
Insitu Architectural Salvage .....	Manchester
Haes Antiques .....	Lancashire

Wilson Reclamation Services .....	Cumbria
Olde Worlde Fireplaces .....	Tyne & Wear
Teesside Architectural Salvage .....	Teesside
Wilson's Yard .....	Co Down

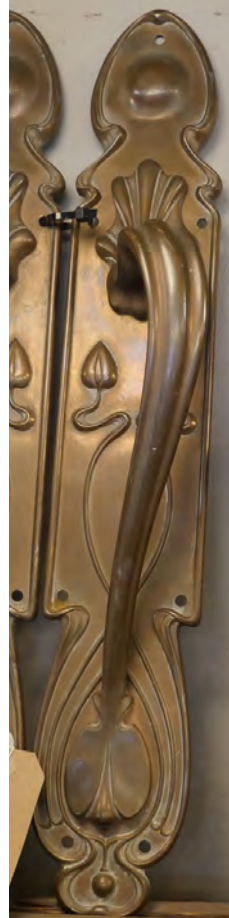
BCA Matériaux Anciens .	Loire, Normandy, France
Jon Webb .....	Lot, France

## HANDY HINTS

"Building a frame opening to fit the salvaged door is more advantageous than finding a door to fit an existing aperture. Consider different hanging methods; hinged, track sliding or pivot hanging." Retrouvius



@retrouvius





## WINDOWS & STAINED GLASS

South West Reclamation .....	Somerset
Ace Reclamation .....	Dorset
Dorset Reclamation .....	Dorset
Olliff's Architectural Antiques .....	Bristol
Rose Green Tiles & Reclamation .....	Bristol
Original Architectural Antiques .....	Gloucestershire
LASSCO Three Pigeons .....	Oxfordshire
Antique Buildings .....	Surrey
Symonds Salvage .....	Kent
Retrouvius .....	London
Westland London .....	London
Architectural Forum .....	Hertfordshire
Architectural Salvage Source .....	Hertfordshire
AB Reclamation .....	Suffolk
Tower Reclaim .....	Suffolk
Treesave Reclamation .....	Suffolk
Mongers Architectural Salvage .....	Norfolk
Real Original .....	Norfolk
English Salvage .....	Herefordshire
Coventry Demolition Company .....	Warwickshire
Warwick Reclamation .....	Warwickshire
UK Architectural Antiques .....	Staffordshire
Ransfords .....	Northamptonshire
Watling Reclamation .....	Northamptonshire
Cheshire Demolition & Excavation .....	Cheshire
Reclaimed World .....	Cheshire
Insitu Architectural Salvage .....	Manchester
Haes Antiques .....	Lancashire
Abacus Stone Sales .....	Yorkshire
Wilson Reclamation Services .....	Cumbria
Olde Worlde Fireplaces .....	Tyne & Wear
Teesside Architectural Salvage .....	Teesside
Wilsons Yard .....	Co Down

## RADIATORS

Stax Reclamation .....	Cornwall
Reclaimed Radiators .....	Somerset
South West Reclamation .....	Somerset
Ace Reclamation .....	Dorset
Dorset Reclamation .....	Dorset
Olliff's Architectural Antiques .....	Bristol
Rose Green Tiles & Reclamation .....	Bristol
Lassco Three Pigeons .....	Oxfordshire
Cast Iron Reclamation Company .....	Surrey
Symonds Salvage .....	Kent
Architectural Forum .....	Hertfordshire
Architectural Salvage Source .....	Hertfordshire
AB Reclamation .....	Suffolk
Mongers Architectural Salvage .....	Norfolk
Morways Reclaimers .....	Norfolk
English Salvage .....	Herefordshire
Coventry Demolition Company .....	Warwickshire
Warwick Reclamation .....	Warwickshire
UK Architectural Antiques .....	Staffordshire
Ransfords .....	Northamptonshire
Watling Reclamation .....	Northamptonshire
Insitu Architectural Salvage .....	Manchester
Teesside Architectural Salvage .....	Teesside
Wilsons Yard .....	Co Down

### HANDY HINT

"Unsure if a cast iron radiator is old or new? Examine sectional length, joint tightness, and fitting positions. Originals often feature shorter sectional length, have very snug gaps, and usually retain 3/4" top feeds if unrestored. Such details, among others, help distinguish vintage from modern reproductions."

Kate, Reclaimed Radiators





Created by Salvo, the Truly Reclaimed™ standard shares the social value, heritage and eco-benefits of real reuse. Deeper traceability also ensures that stories are not lost with the exchange of owner.

Get in touch to build with Truly Reclaimed™ material and distinguish your spaces with authenticity.


[trulyreclaimed.org](http://trulyreclaimed.org)

# RECLAIMED WOOD FLOORING

including machine made, adzed and pit sawn floorboards, roofboard, wood strip, woodblock and oak parquet de Versailles. Timber includes softwood - cedar, pine, spruce, larch; temperate hardwoods - beech, chestnut, elm, oak; tropical hardwoods - mahogany, opepe, panga panga, teak, wenge and many more.

Stax Reclamation .....	Cornwall
South West Reclamation .....	Somerset
Ace Reclamation .....	Dorset
Dorset Reclamation .....	Dorset
Olliff's Architectural Antiques .....	Bristol
Rose Green Tiles & Reclamation .....	Bristol
Original Architectural Antiques .....	Gloucestershire
Ronson Reclaim .....	Gloucestershire
Winchcombe Reclamation .....	Gloucestershire
TMO Reclaim .....	Buckinghamshire
LASSCO Three Pigeons .....	Oxfordshire
J Brant Reclamation .....	Berkshire
Romsey Reclamation .....	Hampshire
Antique Buildings .....	Surrey
Cast Iron Radiator Company .....	Surrey
Woodstoneuk .....	Surrey
Symonds Salvage .....	Kent
The Antique Oak Flooring Company .....	Kent
Deja Wood .....	London
Reclaimed Ltd .....	London
Antique Wooden Floors .....	Essex
Ashwells Reclaimed Timber .....	Essex
Architectural Forum .....	Hertfordshire
Architectural Salvage Source .....	Hertfordshire
Heritage Reclamation .....	Hertfordshire





AB Reclamation .....	Suffolk
Tower Reclaim .....	Suffolk
Treesave Reclamation .....	Suffolk
Mooney Demolition Co .....	Norfolk
Mongers Architectural Salvage .....	Norfolk
Morways Reclaimers .....	Norfolk
English Salvage .....	Herefordshire
Coventry Demolition Company .....	Warwickshire
Warwick Reclamation .....	Warwickshire
Cawarden .....	Staffordshire
UK Architectural Antiques .....	Staffordshire
Conservation Building Supplies ..	Northamptonshire
Ransfords .....	Northamptonshire
Watling Reclamation .....	Northamptonshire
Cheshire Demolition & Excavation .....	Cheshire
Reclaimed World .....	Cheshire
Insitu Architectural Salvage .....	Manchester
Pine Supplies .....	Lancashire
Reclaimed Brick Company .....	Yorkshire
Wilson Reclamation Services .....	Cumbria
Teesside Architectural Salvage .....	Teesside
Wilsons Yard .....	Co Down

BCA Matériaux Anciens ..	Loire, Normandy, France
Jon Webb .....	Lot, France
Antique Floors .....	Luxembourg
Pierre de Bourgogne .....	Tuscany, Italy


## HANDY HINT

"Always visit your supplier to check that the flooring you are proposing to buy has been dry stored internally.....If it is stored outside even under covers it will take on moisture content and once installed will dry and shrink leaving unsightly gaps."

Bob, The Antique Oak Flooring Company

# RECLAIMED TIMBER

including beams, bressems, joists, purlins, rafters and RAILWAY SLEEPERS or RAILROAD TIES.



Stax Reclamation .....	Cornwall
Bath Reclamation .....	Somerset
South West Reclamation .....	Somerset
Ace Reclamation .....	Dorset
Dorset Reclamation .....	Dorset
Rose Green Tiles & Reclamation .....	Bristol
Original Architectural Antiques .....	Gloucestershire
Ronson Reclaim .....	Gloucestershire
Winchcombe Reclamation .....	Gloucestershire
TMO Reclaim .....	Buckinghamshire
J Brant Reclamation .....	Berkshire
Romsey Reclamation .....	Hampshire
Antique Buildings .....	Surrey
Symonds Salvage .....	Kent
Reclaimed Ltd .....	London
Ashwells Reclaimed Timber .....	Essex
Architectural Forum .....	Hertfordshire
Architectural Salvage Source .....	Hertfordshire
Heritage Reclamation .....	Hertfordshire
AB Reclamation .....	Suffolk
Tower Reclaim .....	Suffolk
Treesave Reclamation .....	Suffolk
Mooney Demolition .....	Norfolk
Mongers Architectural Salvage .....	Norfolk
Morways Reclaimers .....	Norfolk
English Salvage .....	Herefordshire
Coventry Demolition Company .....	Warwickshire
Warwick Reclamation .....	Warwickshire
Cawarden .....	Staffordshire
UK Architectural Antiques .....	Staffordshire
Conservation Building Supplies ..	Northamptonshire
Watling Reclamation .....	Northamptonshire
Cheshire Demolition & Excavation .....	Cheshire



Reclaimed World ..... Cheshire  
WillMow Reclamation ..... Greater Manchester  
Abacus Stone Sales ..... Yorkshire  
Reclaimed Brick Company ..... Yorkshire  
Pine Supplies ..... Lancashire  
Wilson Reclamation Services ..... Cumbria  
Wilsons Yard ..... Co Down

BCA Matériaux Anciens . Loire, Normandy, France  
Jon Webb ..... Lot, France  
Antique Floors ..... Luxembourg



*Above: Vanity unit recrafted by Heritage Reclamation reusing antique oak slabs sourced from a barn in Limousine, France*



WATLING RECLAMATION

watlingreclamation.co.uk

+44 (0)1327 811 888



**Sustainably focused architectural reclamation since 2012**

Architectural Stone  
Reclaimed Bricks & Wall Copings  
Roof Tiles, Ridges & Chimneys  
Flagstones & Paving Blocks  
Cobbles & Setts



sales@watlingreclamation.co.uk

@@watling\_reclamation

The Old Pump House, Cuttle Mill, Watling Street, Towcester NN12 6LF



# RECLAIMED BRICKS

including air bricks, coping, decorative, flared headers, handmade, pressed, string course, wire cut.

Bath Reclamation .....	Somerset
South West Reclamation .....	Somerset
Ace Reclamation .....	Dorset
Dorset Reclamation .....	Dorset
Rose Green Tiles & Reclamation .....	Bristol
Ronson Reclaim .....	Gloucestershire
Winchcombe Reclamation .....	Gloucestershire
TMO Reclaim .....	Buckinghamshire
J Brant Reclamation .....	Berkshire
Romsey Reclamation .....	Hampshire
Antique Buildings .....	Surrey
Woodstoneuk .....	Surrey
Woodlands Farm Nursery Reclamation .....	Surrey
Symonds Salvage .....	Kent
London Reclaimed Brick Merchants .....	London
Architectural Forum .....	Hertfordshire
V&V Reclamation .....	Hertfordshire
Architectural Salvage Source .....	Hertfordshire
3A Roofing .....	Suffolk
AB Reclamation .....	Suffolk
Tower Reclaim .....	Suffolk
Treesave Reclamation .....	Suffolk
Mooney Demolition .....	Norfolk
Morways Reclaimers .....	Norfolk
Coventry Demolition Company .....	Warwickshire
Warwick Reclamation .....	Warwickshire
Cawarden .....	Staffordshire
Brick Tiles Direct .....	Northamptonshire
Conservation Building Supplies .....	Northamptonshire
Ransfords .....	Northamptonshire
Reclaimedbricks.com .....	Northamptonshire
Watling Reclamation .....	Northamptonshire
Glens Reclaim .....	Derbyshire
Cheshire Demolition & Excavation .....	Cheshire
Reclaimed World .....	Cheshire

WillMow Reclamation .....	Greater Manchester
Abacus Stone Sales .....	Yorkshire
Reclaimed Brick Company .....	Yorkshire
Wilsons Yard .....	Co Down

BCA Matériaux Anciens . Loire, Normandy, France

## HANDY HINT

"Consider being eco-virtuous by reusing locally sourced non-matching reclaimed bricks for your project and use lime mortar so that your reclaimed bricks may be reclaimed again in future."  
Thornton, Salvo

**LONDON RECLAIMED**

**BRICK MERCHANTS**

UK's leading supplier of London Yellow Stocks

**New Bricks**  
**Reclaimed Bricks**  
**Reclaimed Stone**

**Brick Matching**  
**Brick Cutting**  
**Nationwide Delivery**

**0208 452 1111**  
**www.lrbm.com sales@lrbm.com**  
**Holloway Farm, Harmondsworth Road, West Drayton, UB7 9JS**  
**@londonreclaimedbrickmerchants**



## RECLAIMED FLAGSTONES

including cobbles, floor tiles, kerb, marble, pammets, pavers, setts.

Stax Reclamation .....	Cornwall
Bath Reclamation .....	Somerset
Natural Stone Consulting .....	Somerset
South West Reclamation .....	Somerset
Ace Reclamation .....	Dorset
Dorset Reclamation .....	Dorset
Rose Green Tiles & Reclamation .....	Bristol
Original Architectural Antiques .....	Gloucestershire
Ronson Reclaim .....	Gloucestershire
Winchcombe Reclamation .....	Gloucestershire
LASSCO Three Pigeons .....	Oxfordshire
TMO Reclaim .....	Buckinghamshire
J Brant Reclamation .....	Berkshire
Natural Stone Consulting .....	Berkshire
Romsey Reclamation .....	Hampshire
Antique Buildings .....	Surrey
Woodlands Farm Nursery Reclamation .....	Surrey
Symonds Salvage .....	Kent
London Reclaimed Brick Merchants .....	London
Architectural Forum .....	Hertfordshire
Architectural Salvage Source .....	Hertfordshire
V&V Reclamation .....	Hertfordshire
AB Reclamation .....	Suffolk
Tower Reclaim .....	Suffolk
Treesave Reclamation .....	Suffolk
Mooney Demolition .....	Norfolk
Mongers Architectural Salvage .....	Norfolk
Morways Reclaimers .....	Norfolk
Real Original .....	Norfolk
English Salvage .....	Herefordshire
Coventry Demolition Company .....	Warwickshire
Warwick Reclamation .....	Warwickshire
Cawarden .....	Staffordshire
UK Architectural Antiques .....	Staffordshire
Conservation Building Supplies .....	Northamptonshire

Ransfords .....	Northamptonshire
Watling Reclamation .....	Northamptonshire
Glens Reclaims .....	Derbyshire
Cheshire Demolition & Excavation .....	Cheshire
Reclaimed World .....	Cheshire
Reclaimed Flagstones .....	Manchester
WillMow Reclamation .....	Greater Manchester
Abacus Stone Sales .....	Yorkshire
Reclaimed Brick Company .....	Yorkshire
Wilson Reclamation Services .....	Cumbria
Teesside Architectural Salvage .....	Teesside
Tradstocks .....	Stirlingshire & West Lothian
Wilsons Yard .....	Co Down

BCA Matériaux Anciens .	Loire, Normandy, France
Pierre de Bourgogne .....	Tuscany, Italy
Antique Floors .....	Luxembourg

## HANDY HINT

"When laying reclaimed stable pavers, the grooves between the 'chocolate bar' square raised sections are often filled with cement. To remove, use a hammer drill and blunt bit, work it backwards & forwards along the grooves. The hammer action separates the cement from the smooth blue brick surface, leaving a much more three dimensional and characterful product."

Watling Reclamation



SCAN ME

Watch Watling Reclamation's guide to laying reclaimed stable pavers

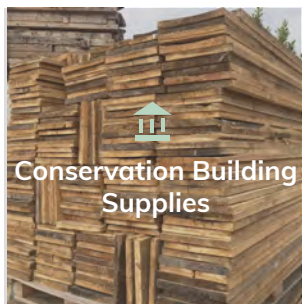
# Staverton Park Estate



[www.reclaimedbricks.com](http://www.reclaimedbricks.com)



[www.bricktilesdirect.co.uk](http://www.bricktilesdirect.co.uk)



[www.conservationbuildingsupplies.co.uk](http://www.conservationbuildingsupplies.co.uk)

## RECLAIMED ROOF TILES & SLATES

including chimneypots, ridge, ridge finials, tiles - delta, double romans, pantiles, peg tiles, plain tile, redland, triple romans, and slates.

Stax Reclamation .....	Cornwall
Bath Reclamation .....	Somerset
South West Reclamation .....	Somerset
Ace Reclamation .....	Dorset
Dorset Reclamation .....	Dorset
Rose Green Tiles & Reclamation .....	Bristol
Original Architectural Antiques .....	Gloucestershire
Ronson Reclaim .....	Gloucestershire
Winchcombe Reclamation .....	Gloucestershire
TMO Reclaim .....	Buckinghamshire
J Brant Reclamation .....	Berkshire
Romsey Reclamation .....	Hampshire
Antique Buildings .....	Surrey
London Reclaimed Brick Merchants .....	London
Symonds Salvage .....	Kent
Architectural Salvage Source .....	Hertfordshire
Skyline Reclamation .....	Hertfordshire
3A Roofing .....	Suffolk
AB Reclamation .....	Suffolk
Tower Reclaim .....	Suffolk
Treesave Reclamation .....	Suffolk
Mooney Demolition .....	Norfolk
Morways Reclaimers .....	Norfolk
Coventry Demolition Company .....	Warwickshire
Warwick Reclamation .....	Warwickshire
Cawarden .....	Staffordshire
Conservation Building Supplies ..	Northamptonshire
Ransfords .....	Northamptonshire
Watling Reclamation .....	Northamptonshire
Glens Reclaim .....	Derbyshire
Cheshire Demolition & Excavation .....	Cheshire
WillMow Reclamation .....	Greater Manchester
Abacus Stone Sales .....	Yorkshire
Reclaimed Brick Company .....	Yorkshire
Wilsons Yard .....	Co Down

BCA Matériaux Anciens . Loire, Normandy, France



Tel +44 (0)7976 925 452 | [stavertonparkestate@mail.com](mailto:stavertonparkestate@mail.com)

Staverton Park Estate, A425 Daventry Road, Staverton NN11 6BF

# RECLAIMED STONE WALLING

including ashlar, boasted, cills, coping, coursed, heads, lintols, pitch-faced, quoins, random, rangework, reticulated, rubble, tooled margins.

Bath Reclamation .....	Somerset
Ronson Reclaim .....	Gloucestershire
Winchcombe Reclamation .....	Gloucestershire
J Brant Reclamation .....	Berkshire
Romsey Reclamation .....	Hampshire
Antique Buildings .....	Surrey
Woodlands Farm Nursery Reclamation .....	Surrey
Tower Reclaim .....	Suffolk
Treesave Reclamation .....	Suffolk
Morways Reclaimers .....	Norfolk
Cawarden .....	Staffordshire
Conservation Building Supplies .....	Northamptonshire
Watling Reclamation .....	Northamptonshire
Cheshire Demolition & Excavation .....	Cheshire
WillMow Reclamation .....	Greater Manchester
Abacus Stone Sales .....	Yorkshire
Reclaimed Brick Company .....	Yorkshire
Tradstocks .....	Stirlingshire & West Lothian
Wilsons Yard .....	Co Down

BCA Matériaux Anciens ..	Loire, Normandy, France
Pierre de Bourgogne .....	Tuscany, Italy

## HANDY HINT

"Reclaimed Yorkshire stone is one of the most aesthetically pleasing materials available for your landscaping projects, hard-wearing and environmentally friendly." Abacus Stone Sales

# ARCHITECTURAL STONE

including marble, composites such as concrete, glass fibre, fired clay, stoneware, terracotta items such as arches, architrave, cladding, columns, corbels, cornice, door surrounds, label mouldings, portico, skirting, steps, stone windows, string course, and window surrounds.

Stax Reclamation .....	Cornwall
Simon Wharton Antiques .....	Somerset
South West Reclamation .....	Somerset
Ace Reclamation .....	Dorset
Dorset Reclamation .....	Dorset
Olliff's Architectural Antiques .....	Bristol
Rose Green Tiles & Reclamation .....	Bristol
Architectural Heritage .....	Gloucestershire
Winchcombe Reclamation .....	Gloucestershire
Ronson Reclaim .....	Gloucestershire
LASSCO Three Pigeons .....	Oxfordshire
J Brant Reclamation .....	Berkshire
Antique Buildings .....	Surrey
Retrovius .....	London
Westland London .....	London
Architectural Forum .....	Hertfordshire
Architectural Salvage Source .....	Hertfordshire
Tower Reclaim .....	Suffolk
Treesave Reclamation .....	Suffolk
Mooney Demolition .....	Norfolk
Mongers Architectural Salvage .....	Norfolk
Real Original .....	Norfolk
English Salvage .....	Herefordshire
Coventry Demolition Company .....	Warwickshire
Warwick Reclamation .....	Warwickshire
Cawarden .....	Staffordshire
UK Architectural Antiques .....	Staffordshire
Ransfords .....	Northamptonshire
Watling Reclamation .....	Northamptonshire
Cheshire Demolition & Excavation .....	Cheshire
Reclaimed World .....	Cheshire
WillMow Reclamation .....	Greater Manchester
Abacus Stone Sales .....	Yorkshire
Reclaimed Brick Company .....	Yorkshire
Teesside Architectural Salvage .....	Teesside
Tradstocks .....	Stirlingshire & West Lothian
Wilsons Yard .....	Co Down

BCA Matériaux Anciens ...	Loire, Normandy, France
---------------------------	-------------------------





## ARCHITECTURAL WOODWORK

including arches, columns, oak framed buildings etc.

Stax Reclamation .....	Cornwall
South West Reclamation .....	Somerset
Ace Reclamation .....	Dorset
Dorset Reclamation .....	Dorset
Olliff's Architectural Antiques .....	Bristol
Rose Green Tiles & Reclamation .....	Bristol
Winchcombe Reclamation .....	Gloucestershire
Ronson Reclaim .....	Gloucestershire
LASSCO Three Pigeons .....	Oxfordshire
J Brant Reclamation .....	Berkshire
Antique Buildings .....	Surrey
Cast Iron Reclamation Company .....	Surrey
Symonds Salvage .....	Kent
Retrouvius .....	London
Westland London .....	London
Antiques By Design .....	Essex
Ashwells Reclaimed Timber .....	Essex
Architectural Forum .....	Hertfordshire
Architectural Salvage Source .....	Hertfordshire
Heritage Reclamation .....	Hertfordshire
AB Reclamation .....	Suffolk
Treesave Reclamation .....	Suffolk
Mongers Architectural Salvage .....	Norfolk
Morways Reclaimers .....	Norfolk
Real Original .....	Norfolk
English Salvage .....	Herefordshire
Coventry Demolition Company .....	Warwickshire
Warwick Reclamation .....	Warwickshire
UK Architectural Antiques .....	Staffordshire
Watling Reclamation .....	Northamptonshire
Cheshire Demolition & Excavation .....	Cheshire
Reclaimed World .....	Cheshire
Insitu Architectural Salvage .....	Manchester
Abacus Stone Sales .....	Yorkshire
Reclaimed Brick Company .....	Yorkshire
Wilson Reclamation Services .....	Cumbria
Teesside Architectural Salvage .....	Teesside
Wilsons Yard .....	Co Down

BCA Matériaux Anciens . Loire, Normandy, France

## ARCHITECTURAL METAL

including rainwater gear, gates & railings.

Stax Reclamation .....	Cornwall
South West Reclamation .....	Somerset
Ace Reclamation .....	Dorset
Dorset Reclamation .....	Dorset
Olliff's Architectural Antiques .....	Bristol
Rose Green Tiles & Reclamation .....	Bristol
Winchcombe Reclamation .....	Gloucestershire
Ronson Reclaim .....	Gloucestershire
LASSCO Three Pigeons .....	Oxfordshire
J Brant Reclamation .....	Berkshire
Romsey Reclamation .....	Hampshire
Symonds Salvage .....	Kent
Retrouvius .....	London
Westland London .....	London
Antiques By Design .....	Essex
Architectural Forum .....	Hertfordshire
Architectural Salvage Source .....	Hertfordshire
AB Reclamation .....	Suffolk
Treesave Reclamation .....	Suffolk
Mongers Architectural Salvage .....	Norfolk
Mooney Demolition .....	Norfolk
Morways Reclaimers .....	Norfolk
Real Original .....	Norfolk
English Salvage .....	Herefordshire
Coventry Demolition Company .....	Warwickshire
Warwick Reclamation .....	Warwickshire
UK Architectural Antiques .....	Staffordshire
Ransfords .....	Northamptonshire
Watling Reclamation .....	Northamptonshire
Cheshire Demolition & Excavation .....	Cheshire
Reclaimed World .....	Cheshire
Insitu Architectural Salvage .....	Manchester
WillMow Reclamation .....	Greater Manchester
Haes Antiques .....	Lancashire
Abacus Stone Sales .....	Yorkshire
Reclaimed Brick Company .....	Yorkshire
Wilson Reclamation Services .....	Cumbria
Teesside Architectural Salvage .....	Teesside
Wilsons Yard .....	Co Down

BCA Matériaux Anciens . Loire, Normandy, France



## THEFT ALERTS

Salvo has long offered free Theft Alerts on SalvoWEB to facilitate recovery. Theft Alerts are circulated through our network and to some police forces and security agencies.

### Identification and recovery

Take clear photographs of garden ornaments and architectural features in unoccupied buildings. Note damage or marks, colour, materials, dimensions and inscriptions. Keep this information secure.

### If you see suspicious activity

Contact the police on 999 during or online after witnessing something which looks like a theft. If the activity is in a church or listed building or in a conservation area, alert the planning department.

### Raising a theft alert

After contacting the police make a note of the crime reference number and create a Salvo Theft Alert as quickly as possible.

## DECONSTRUCTION & DISMANTLING

Architectural features, building materials and complete buildings can be circulated with a Dismantling Alert on SalvoWEB to connect with potential buyers and reusers well in advance of planned deconstruction and demolition.

If you have a building which needs deconstructing try our listed demolition contractors in the Salvo Directory.



*Left:  
Dismantling  
Alert for  
a bar  
previously  
listed on  
SalvoWEB*

futuR=use

Salvo undertakes  
Predemolition, Reclamation  
and Environmental  
Audits of impacts such  
as embodied carbon  
emissions avoidance and  
social value.



SCAN ME

Abacus Stone Sales are the leading specialist of new and reclaimed Yorkshire stone.

We have large stocks of reclaimed flagstones, cobbles, walling stone, heads and cills and Indian roof slates to name a few. All our stock can be viewed at our yard in Holmfirth, West Yorkshire.

Having large quantities of stock allows us to find the best products to suit the style, scope and budget of your development, as well as providing project-specific advice.

We can also help you to match our reclaimed Yorkshire stone to any original building. If your project is local to West Yorkshire, we will visit you on-site. If you are based nationally, you can send us photos so that we can match reclaimed stone in all areas of the UK.

Deliveries can be arranged by our own fleet of vehicles, from two bags on one of our small tippers, up to 12 bags on our flatbed with unloading facilities throughout the UK.

Call today +44 7711 997026 | +44 1484 972 688

Or email [sales@abacusstonesales.co.uk](mailto:sales@abacusstonesales.co.uk)

for prices of current stock



## Salvo Code Directory

A celebration of the vast and diverse architectural salvage scene, the following pages are perhaps the most important in this small yet mighty book. Take the secret out of hidden reclaimed treasure with the suppliers you need to know listed by region.



## BEDFORDSHIRE



### SKYLINE RECLAMATION

Reclaimed roofing slates and roof tiles carefully inspected and crated.

1-3 Edison Road, Elms Farm Industrial Estate Bedford,

Bedfordshire MK41 0HU

Tel +44 (0)1234 271 367

Cherrycourt Way, Stanbridge Road, Leighton Buzzard

Bedfordshire LU7 4UH

Tel +44 (0)152 537 4723

[skylineroofing.co.uk](http://skylineroofing.co.uk)

## BERKSHIRE

### J BRANT RECLAMATION

Reclaimed building & landscaping materials, architectural salvage, antique & reproduction garden statuary.

Lakeside Farm, Brimpton Common, Tadley, Berkshire RG7 4RT

Tel +44 (0)118 981 3882

[jbrant.co.uk](http://jbrant.co.uk)

### NATURAL STONE CONSULTING

Antiqued and reclaimed natural stone floors, reclaimed terracotta tiles, granite, setts, York cobbles.

Viewing by appointment only: Unit 7 Ampere Road, Newbury, Berkshire RG14 2DQ

Tel +44 (0)333 444 8899

[naturalstoneconsulting.co.uk](http://naturalstoneconsulting.co.uk)

## BRISTOL

### OLLIFF'S ARCHITECTURAL ANTIQUES

Antique architectural elements, bathrooms, door furniture, pub fittings, garden ornament and flooring.

Viewing by appointment only: Bristol

Tel +44 (0)7850 235793

[olliffs.com](http://olliffs.com)

## ROSE GREEN TILES & RECLAMATION

Reclaimed roof tiles and slates, cast iron radiators, sleepers, floor tiles and flagstones, fireplaces, garden ornament.

206 Rose Green Road, Fishponds, Bristol BS5 7UP

Tel +44 (0)117 952 0109

[salvage-and-reclamation-yards.co.uk](http://salvage-and-reclamation-yards.co.uk)

## BUCKINGHAMSHIRE

### SITE 77

Longstanding reclamation business now specialising purely on sourcing for private clients & architects. Reclaimed and new, matching building materials by request.

20a Station Road, Winslow, Buckinghamshire MK18 3ES

Tel +44 (0)7768 155771

[site77.co.uk](http://site77.co.uk)

### SKYLINE RECLAMATION

Reclaimed roofing slates & roof tiles carefully inspected and crated.

Unit 4, M40 Industrial Estate, Blenheim Road, Cressex Business

Park High, Buckinghamshire HP12 3RS

Tel +44 (0)1494 932 500

[skylineroofing.co.uk](http://skylineroofing.co.uk)

### TMO RECLAIM

Reclaimed building & landscaping materials, including Yorkstone flags, bricks, roofing slate, tiles & ridges.

Unit 4, Station Road Industrial Estate, Winslow,

Buckinghamshire MK18 3RQ

Tel +44 (0)1296 711772

[tmoreclaim.co.uk](http://tmoreclaim.co.uk)



TMO Reclaim

## CHESHIRE

### CHESHIRE DEMOLITION & EXCAVATION

Demolition services with stocks of reclaimed stone, bricks, slates, tiles, beams, doors, sleepers, gates and railings.  
72 Moss Lane, Macclesfield,  
Cheshire SK11 7TT  
Tel +44 (0)1625 424 433  
[cheshiredemolition.co.uk](http://cheshiredemolition.co.uk)



### NOSTALGIA

Antique fireplaces from Tudor to Georgian, Victorian and Edwardian eras (1550-1920). Decorative antiques and lighting.  
Bridge House, Ashton Road, Stockport, Cheshire SK6 2QN  
Tel +44 (0)161 477 7706  
[nostalgia-uk.com](http://nostalgia-uk.com)

### RECLAIMED WORLD

Reclamation emporium offering architectural salvage, building materials, flooring and garden features/furniture.  
Tarporley Road, Little Budworth, Tarporley, Cheshire CW6 9ES  
Tel +44 (0)1829 760288  
[reclaimedworld.com](http://reclaimedworld.com)

## CORNWALL

### STAX RECLAMATION

Reclaimed materials & architectural salvage. Find Victorian chairs to Mid-Century Modern units in their furniture showroom.  
Avery way, Tamar view Industrial Estate, Saltash,  
Cornwall PL12 6LD  
Tel +44 (0)1752 849111  
[staxreclamation.com](http://staxreclamation.com)



## CUMBRIA

### WILSON RECLAMATION SERVICES

Yew Tree Barn is home to Wilson Reclamation Services for Architectural antiques & reclamation alongside artisan studios & Harry's CafeBar.  
Yew Tree Barn, Low Newton, Grange-over-Sands, Cumbria LA11 6JP  
Tel +44 (0)1539 531498  
[yewtreebarn.co.uk](http://yewtreebarn.co.uk)

## DERBYSHIRE

### GLENS RECLAIM

Reclaimed roof tiles, ridges & chimney pots, pavers, bricks, garden ornament & bygoners.  
Viewing by appointment only: Unit 6 Parcel Terrace, Derby DE1 1JP  
Tel +44 (0)1332 386037  
[glensreclaim.com](http://glensreclaim.com)

## DEVON



### THE ORIGINAL BATH COMPANY

Antique bathroom fittings including baths, basins, lavatories, taps & cisterns.  
Full restoration service to your specifications.  
Thrushall Farmhouse, Allerford, Devon  
EX20 4PU  
Tel +44 (0)7966 416745  
[originalbaths.com](http://originalbaths.com)

### TRINITY MARINE

Reclaimed marine antiques, collectables, nautical décor & lighting.  
Scatter Rock, Sheldon Lane, Dunsford, Nr Exeter EX6 7YT  
Tel +44 (0)1647 253400  
[trinitymarine.co.uk](http://trinitymarine.co.uk)

## DORSET

### ACE RECLAMATION

Traditional building and landscaping materials, architectural salvage, period interior pieces & garden antiques.

Pine View, Barrack Road, West Parley, Hurn, Dorset BH22 8UB

Tel +44 (0)1202 579222

[acereclamation.com](http://acereclamation.com)

### DORSET RECLAMATION

Reclaimed building materials, architectural salvage, garden ornament, bathrooms, fireplaces. Restoration and rebuild of salvaged Aga cookers and ranges.

Cow Drove, Bere Regis, Wareham, Dorset BH20 7JZ

Tel +44 (0)1929 472200

[dorsetreclamation.co.uk](http://dorsetreclamation.co.uk)

## ESSEX

### ANTIQUE WOODEN FLOORS

Antique and reclaimed wooden flooring, parquet and wood block, wall and ceiling cladding.

Unit 5, Redhouse, Lower Dunton Road, Bulphan, Essex RM14 3TD

Tel +44 (0)7534 244476

[antiquewoodenfloors.co.uk](http://antiquewoodenfloors.co.uk)

### ANTIQUES BY DESIGN

Designing and recrafting decorative pieces with creative reuse of reclaimed items & salvaged materials.

Viewing by appointment: Woodham Mortimer, Essex CM9 6TL

Tel +44 (0)7710 021010

[antiquesbydesign.co.uk](http://antiquesbydesign.co.uk)

### ASHWELLS RECLAIMED TIMBER

Specialists in tropical hardwood reclamation with an onsite sawmill to produce timber to your specification.

Wick Place Farm, Brentwood Road, Bulphan, Upminster,

Essex RM14 3TL

Tel +44 (0)1375 892576

[ashwelltimber.com](http://ashwelltimber.com)

## GLOUCESTERSHIRE



*Architectural Heritage*

### ARCHITECTURAL HERITAGE

Purveyors of fine architectural antiques, garden ornament, sculpture, period interior panelling & bespoke stone fireplaces.

Taddington Manor, Gloucestershire

GL54 5RY

Tel +44 (0)1386 584414

[architectural-heritage.co.uk](http://architectural-heritage.co.uk)

### RONSON RECLAIM

Architectural features, traditional reclaimed building materials, flagstones, bricks.

Upper Parting, Sandhurst Lane, Sandhurst, Gloucestershire GL2 9NG

Tel +44 (0)1452 387890

[ronsonreclaim.com](http://ronsonreclaim.com)

### THE ORIGINAL ARCHITECTURAL ANTIQUES CO

Antique limestone, Cotswold fireplaces, stone troughs, old well heads, statuary and oak beams.

Ermin Farm, Cricklade Road, Cirencester, Gloucestershire GL7 5PN

Tel +44 (0)1285 869222

[originaluk.com](http://originaluk.com)

### WINCHCOMBE RECLAMATION

Quality reclaimed building materials where stone is sorted, bricks are cleaned, quoins are cut and roofs are put together to order.

Broadway Road Winchcombe,

Cheltenham,

Gloucestershire GL54 5NT

Tel +44 (0)1242 609564

[winchcombereclaim.com](http://winchcombereclaim.com)



*Winchcombe Reclamation*



## GREATER MANCHESTER

### INSITU ARCHITECTURAL SALVAGE

Architectural salvage and classic design pieces since 1984. Happy to source items if you have something special in mind.

252 Chester Road, Hulme, Manchester M15 4EX

Tel +44 (0)161 839 5525

[insitumanchester.com](http://insitumanchester.com)



*Insitu Architectural Salvage*

### PINE SUPPLIES

Reclaimed timber, beams, flooring re-machined, skirting, architrave, window sections and doors.

Lower Tongs Farm, Longshaw Ford Road, Smithills, Bolton, Lancashire BL1 7PP

Tel +44 (0)1204 841416

[pine-supplies.co.uk](http://pine-supplies.co.uk)

### RECLAIMED FLAGSTONE

Reclaimed Yorkshire flagstones, stone and granite kerbs, cobblestones and setts.

Area E, Bamber's Quay, Anderton Street, Wigan, Greater Manchester WN2 2BG

Tel +44 (0)1942 678070

[reclaimedflagstonesltd.co.uk](http://reclaimedflagstonesltd.co.uk)



*WillMow Reclamation*

### WILLMOW RECLAMATION

Traditional reclaimed building & landscaping materials, plus a wide selection of architectural antiques. The Hey, Buckstones Road, Shaw, Oldham, Greater Manchester OL2 8NA

Tel +44 (0)1706 882 868

[willmow.co.uk](http://willmow.co.uk)

## HAMPSHIRE



*Romsey Reclamation*

### ROMSEY RECLAMATION

Reclaimed railway sleepers, bricks, tiles, slates, timber, flagstones and architectural salvage.

Oak Tree Farm, Dunbridge Lane, Awbridge Romsey, Hampshire SO51 0GQ

Tel +44 (0)1794 342252

[romseyreclamation.com](http://romseyreclamation.com)

## HEREFORD & WORCS

### ENGLISH SALVAGE

Architectural antiques, salvage, lighting, bygones, garden ornament & decorative architectural building materials.

North Road, Leominster, Herefordshire HR6 0AB

Tel +44 (0)1568 616205

[englishsalvage.co.uk](http://englishsalvage.co.uk)

## HERTFORDSHIRE

### ARCHITECTURAL FORUM

Truly Reclaimed architectural antiques, original cast iron radiators, antique chimneypieces, reclaimed flooring, antique & recrafted furniture.

Ware House open by appointment:

Marsh Lane, Ware,

Hertfordshire SG12 9QQ

Tel +44 (0)20 7704 0982

[thearchitecturalforum.com](http://thearchitecturalforum.com)



*The Architectural Forum*



*Architectural Salvage Source*

## ARCHITECTURAL SALVAGE SOURCE

Offering stocks of reclaimed bricks, Yorkstone flags, timber flooring, salvage and garden antiques.  
Willows Farm Village, Coursers Road,  
London Colney, St Albans, Hertfordshire  
AL2 1BB  
Tel +44 (0)7960 351141  
[archsource.co.uk](http://archsource.co.uk)

## HERITAGE RECLAMATION

Reclaimed flooring & bespoke joinery  
crafted from a wide selection of  
reclaimed timbers.  
14 Wood Lane, Paradise Industrial  
Estate, Hemel Hempstead HP2 4TL  
Tel +44 (0)1442 219936  
[heritagereclamation.co.uk](http://heritagereclamation.co.uk)



*Heritage Reclamation*

## SKYLINE RECLAMATION

Reclaimed roofing slates and roof tiles carefully inspected and crated.  
The Nap, Kings Langley Hertfordshire WD4 8ES  
Tel +44 (0)192 326 2620  
Wiggenhall Industrial Estate, Wiggenhall Road, Watford,  
Hertfordshire WD18 0FL  
Tel +44 (0)192 322 6726  
[skylineroofing.co.uk](http://skylineroofing.co.uk)

## V&V RECLAMATION

Suppliers of traditional reclaimed building material. Stocks include  
bricks and natural stone paving.  
Viewing by appointment: Hertford, Hertfordshire SG14 2PW  
Tel +44 (0)1992 550941  
[vandv.co.uk](http://vandv.co.uk)

## KENT

### ANTIQUE OAK FLOORING CO

Truly Reclaimed timber. Antique and  
reclaimed wood flooring & cladding  
with specialist advice on suitability,  
installation and finishing.  
Willow Court Farm, Bilsington Road,  
Ruckinge, Ashford, Kent TN26 2PB  
Tel +44 (0)7733 263540  
[reclaimedflooring.co.uk](http://reclaimedflooring.co.uk)



*Antique Oak Flooring Co*

### CATCHPOLE & RYE

Timeless bathroom products made using artistic and traditional  
techniques in Kent.  
Viewing by appointment only: Saracens Dairy, Pluckley Rd, Ashford,  
Kent TN27 0SA  
Tel +44 (0)1233 840840  
[catchpoleandrye.com](http://catchpoleandrye.com)

### SYMONDS SALVAGE

Reclaimed building materials & garden items. Original shepherd's  
huts or huts made to order using high spec reclaimed materials.  
Colts Yard, Pluckley Road, Bethersden, Nr Ashford, Kent TN26 3DD  
Tel +44 (0)1233 820724  
[symondssalvage.co.uk](http://symondssalvage.co.uk)



*Haes Antiques*

## LANCASHIRE

### HAES ANTIQUES

Antique and vintage lighting, furniture,  
bygones, architectural elements &  
decorative antiques.  
Viewing by appointment only:  
Lancashire  
Tel +44 (0)7866 370030  
[haes.co.uk](http://haes.co.uk)

## LONDON



*Catchpole & Rye*

### CATCHPOLE & RYE

Timeless bathroom products made using artistic and traditional techniques in Kent.

Viewing by appointment only:

282-284 Fulham Road,

London SW10 9EW

Tel +44 (0)20 7351 0940

[catchpoleandrye.com](http://catchpoleandrye.com)

### DEJA WOOD

Suppliers of reclaimed wooden parquet floors.

Viewing by appointment only: South East London

Tel +44 (0)7464 433185

[woodjob.co.uk](http://woodjob.co.uk)

### LONDON RECLAIMED BRICK MERCHANTS

Reclaimed bricks and natural stone.

Demolitions, large or small, take a stringent attitude to health and safety.

Brick matching service available.

Holloway Farm, Harmondsworth Road,

West Drayton UB7 9JS

Tel +44 (0)20 8452 1111

[lrbm.com](http://lrbm.com)



*London Reclaimed Brick Merchants*

### NICHOLAS GIFFORD-MEAD ANTIQUES

Fine seventeenth, eighteenth and nineteenth century chimneypieces, associated fire furniture and garden sculpture.

Viewing by appointment only: London

Tel +44 (0)207 736 0808

[nicholasgiffordmead.co.uk](http://nicholasgiffordmead.co.uk)

### RECLAIMED LTD

Reclaimed wooden flooring, joinery timber manufacturers & suppliers. Bespoke service.

Sewardstone Hall Farm, Sewardstone Road, Chingford,

London E4 7RH

Tel +44 (0)20 8529 8504

[reclaimed.uk.com](http://reclaimed.uk.com)

### RETROUVIUS

Salvage company and design studio.

Tropical hardwoods, architectural

elements, eye-catching one-offs,

furniture, rugs and lighting.

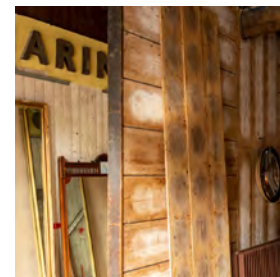
Viewing by appointment only:

1016 Harrow Road,

London NW10 5NS

Tel +44 (0)20 8960 6060

[retrouvius.com](http://retrouvius.com)



*Retrouvius*

### SKYLINE RECLAMATION

Reclaimed roofing slates and roof tiles carefully inspected and crated.

Head office (with multiple branches in Greater London)

Unit 73 Waterside Trading Centre, Trumpers Way, Hanwell,

Ealing W7 2QA

Tel +44 (0)208 571 1666

[skylineroofing.co.uk](http://skylineroofing.co.uk)

### WESTLAND LONDON

Antique chimneypieces from the 15th to the early 20th century, fireplace accessories, fine furniture, lighting, decorative & architectural antiques.

295 Willesden lane, London NW2 5HY

Tel +44 (0)20 7739 8094

[westlandlondon.com](http://westlandlondon.com)



## NORFOLK



### MONGERS ARCHITECTURAL SALVAGE

Architectural antiques, period bathrooms and sanitaryware, cast iron radiators, fireplaces, doors & accessories.  
15 Market Place, Hingham,  
Norfolk NR9 4AF  
Tel +44 (0)1953 851868  
[mongersofhingham.co.uk](http://mongersofhingham.co.uk)

### MOONEY DEMOLITION CO

Reclamation yard and demolition services. Reclaimed bricks, roofing, flooring, flagstones.  
Newgate House, Gypsy Lane, Hockering, Dereham, Norfolk NR20 3RS  
Tel +44 (0)1603 881401  
[mooneydemolition.co.uk](http://mooneydemolition.co.uk)

### MORWAYS RECLAIMERS

Architectural salvage, reclaimed timber and heritage building materials reclaimed around Norfolk and beyond.  
Old Station Yard, Watton Road, Stow Bedon, Attleborough.  
Norfolk NR17 1DP  
Tel +44 (0)1953 483914  
[morways.co.uk](http://morways.co.uk)

### REAL ORIGINAL

Architectural salvage, decorative and garden antiques, bygones, vintage, retro and recrafted furniture.  
Tel +44 (0)7894 866490  
[realoriginal.co.uk](http://realoriginal.co.uk)

## NORTHAMPTONSHIRE

### BRICK TILES DIRECT

Specialising in the supply of reclaimed brick tiles. Also see sister companies Conservation Building Supplies and Reclaimedbricks.com.  
Staverton Park Estate, A425 Daventry Road, Staverton NN11 6BF  
Tel +44 (0)7976 925 452  
[bricktilesdirect.co.uk](http://bricktilesdirect.co.uk)

## CONSERVATION BUILDING SUPPLIES

Reclaimed building & landscaping material. Stocks include bricks, building stone, roofing slate and tiles, paving & wooden flooring.  
Also see sister companies Brick Tiles Direct & Reclaimedbricks.com.  
Staverton Park Estate, A425 Daventry Road, Staverton NN11 6BF  
Tel +44 (0)7976 925 452  
[conservationbuildingsupplies.co.uk](http://conservationbuildingsupplies.co.uk)

### RANSFORDS

Architectural antiques and salvage. From landscaping & reclaimed building materials to garden ornament and interior items.  
Unit 1 Rutherford Way, Drayton Fields Industrial Estate, Daventry, Northamptonshire NN11 8XW  
Tel +44 (0)1327 705310  
[ransfords.com](http://ransfords.com)

### RECLAIMEDBRICKS.COM

Specialising in the supply of reclaimed bricks. Also see sister companies Brick Tiles Direct and Conservation Building Supplies.  
Staverton Park Estate, A425 Daventry Road, Staverton NN11 6BF  
Tel +44 (0)7976 925 452  
[reclaimedbricks.com](http://reclaimedbricks.com)

### WATLING RECLAMATION

Architectural antiques and salvage.  
From landscaping & reclaimed building materials to garden ornament and interior items.  
The Old Pump House, Cuttle Mill Business Park, Watling Street, Nr. Towcester,  
Northamptonshire NN12 6LF  
Tel +44 (0)1327 811888  
[watlingreclamation.co.uk](http://watlingreclamation.co.uk)



*Watling Reclamation*

## OXFORDSHIRE

### LASSCO THREE PIGEONS

Architectural salvage, garden ornament, decorative antiques, bygones, and a plaster cast collection made in their workshop.  
London Road, Milton Common, Oxfordshire OX9 2JN  
Tel +44 (0)1844 277188

[lassco.co.uk](http://lassco.co.uk)

## SOMERSET

### BATH RECLAMATION

Traditional building materials; reclaimed bricks, flagstones, roof tiles, walling stone and reclaimed flooring.  
Home Farm Yard, Newton St Loe,  
Bath BA2 9DA

Tel +44 (0)7983 556 757

[bathreclamation.co.uk](http://bathreclamation.co.uk)



*Bath Reclamation*

### NATURAL STONE CONSULTING

Antiqued and reclaimed natural stone floors, reclaimed terracotta tiles, granite, setts, York cobbles.

Viewing by appointment only: Unit 4 Ebdon Road, Wick Street,  
Lawrence, Somerset BS22 9NZ

Tel +44 (0)333 444 8899

[naturalstoneconsulting.co.uk](http://naturalstoneconsulting.co.uk)

### RECLAIMED RADIATORS

Specialists in the restoration and supply of antique and vintage radiators. Professionally hand painted ready for installation.

Whatley House, Unit 2 Combe, Frome BA11 3JU

Tel +44 (0)7540 978408

[reclaimedradiators.co.uk](http://reclaimedradiators.co.uk)

### SOUTH WEST RECLAMATION

Reclaimed Bridgwater roof tiles and traditional renovation materials.  
Bricks, doors, floorboards, fireplaces, woodburning stoves, bespoke cut slate hearths.

Wireworks Estate, Bristol Road, Bridgwater, Somerset TA6 4AP

Tel +44 (0)1278 444141

[southwest-rec.co.uk](http://southwest-rec.co.uk)

## SIMON WHARTON ANTIQUES

Antique French fireplaces and stone chimneypieces, decorative, garden and architectural antiques.

Viewing by appointment only:

Somerset

Tel +44 (0)7974 579694

[whartonantiques.com](http://whartonantiques.com)



*Simon Wharton Antiques*

## STAFFORDSHIRE

### CAWARDEN

Specialists in the supply of reclaimed building materials and architectural salvage.

Cawarden Springs Farm, Blithbury Road, Rugeley,

Staffordshire WS15 3HL

Tel +44 (0)1889 574066

[cawardenreclaim.co.uk](http://cawardenreclaim.co.uk)

### UK ARCHITECTURAL ANTIQUES

Architectural and garden antiques and building materials. Church furnishings, post boxes, butchers blocks and bespoke items.

Hill Farm, 82 Hayfield Hill, Cannock Wood, Staffordshire WS15 4RU

Tel +44 (0)1543 222923

[ukaa.com](http://ukaa.com)

## SUFFOLK



### 3A ROOFING

Roofing contractors with expertise in heritage buildings. The yard offers stocks of reclaimed roof tiles, slates & bricks.

The Laurels, Copdock,  
Ipswich IP8 3JF

Tel +44 (0)1473 730666

[3aroofing.co.uk](http://3aroofing.co.uk)



*AB Reclamation*

## **AB RECLAMATION**

Architectural salvage and reclamation centre offering reclaimed building materials, garden antiques & salvaged period features.

The Barn, Block Farm, Bradfield

Combust, Bury St Edmunds,

Suffolk IP30 0LW

Tel +44 (0)1284 828081

[abreclamation.co.uk](http://abreclamation.co.uk)

## **TOWER RECLAIM**

Reclaimed building materials, oak beams, bricks, flooring, roof tiles, stone paving and oak frames.

Viewing by appointment only: Tower Farm, Norwich Road,

Mendlesham, Suffolk IP14 5NE

Tel +44 (0)1449 766095

[tower-reclaim.co.uk](http://tower-reclaim.co.uk)

## **TREESAVE RECLAMATION LTD**

Period reclaimed building materials and architectural salvage, original flooring, oak beams, doors, bricks, tiles and slates.

Fysh House, Cuckoo Hill, Bures, Suffolk CO8 5LD

Tel +44 (0)1787 227272

[treesave.co.uk](http://treesave.co.uk)

## **SURREY**

### **ANTIQUE BUILDINGS**

Ancient oak-framed buildings, also oak beams, bricks, dismantled barn frames & wide oak conservation quality floorboards.

Dunsfold, Godalming,

Surrey GU8 4NP

Tel +44 (0)1483 200477

[antiquebuildings.co.uk](http://antiquebuildings.co.uk)



*Antique Buildings*

## **CAST IRON RECLAMATION CO**

Architectural salvage and antiques, also see sister company Vintage Fridge Co for ice boxes and vintage refrigerators.

Viewing by appointment only: Hazeldene Farm, Ockham Lane,

Cobham, Surrey KT11 1LW

Tel +44 (0)7813 293866

[castironreclamation.com](http://castironreclamation.com)

## **SKYLINE RECLAMATION**

Reclaimed roofing slates and roof tiles carefully inspected and crated.

29-31 Stonecot Hill, Cheam Surrey SM3 9HH

Tel +44 (0)20 8644 7600

[skylineroofing.co.uk](http://skylineroofing.co.uk)

## **VINTAGE FRIDGE COMPANY**

Specialising in the refurbishment and supply of original "Ice Box" & vintage refrigerators, also see sister company Cast Iron Reclamation Co.

Viewing by appointment only: Hazeldene Farm, Ockham Lane,

Cobham, Surrey KT11 1LW

Tel +44 (0)7813 293866

[thevintagefridgecompany.com](http://thevintagefridgecompany.com)

## **WOODLANDS FARM NURSERY & RECLAMATION**

Reclaimed landscape & building materials. York flagstones, bricks, walling stone, rockery stone, garden ornament & antiques.

Wood Street Green, Green, Wood Street Village, Surrey GU3 3DU

Tel +44 (0)7774 741 321

[woodlandsfarmreclamation.co.uk](http://woodlandsfarmreclamation.co.uk)

## **WOODSTONEUK**

Specialising in reclaimed and new flooring. Shopfittings, bygones, furniture, lighting, vintage and industrial finds.

Viewing by appointment only: Windlesham, Surrey

Tel +44 (0)7785 288 544

[woodstoneuk.com](http://woodstoneuk.com)



## TYNE AND WEAR

### OLDE WORLDE FIREPLACES

Antique fireplaces, surrounds and kitchen ranges including Victorian, Edwardian, Georgian, and Arts & Crafts fireplaces.

18 Blandford Square,  
Newcastle upon Tyne NE1 4HZ  
Tel +44 (0)191 261 9229

[olde-world-fireplaces.co.uk](http://olde-world-fireplaces.co.uk)



*Olde Worlde Fireplaces*

## WARWICKSHIRE



### WARWICK RECLAMATION

Traditional reclaimed building materials & architectural antiques. Timber flooring, oak & elm beams, period fireplaces, bespoke doors and hardware.  
Harbury Lane, Bishops Tachbrook,  
Leamington Spa CV33 9SA  
Tel +44 (0)1926 881539

[warwickreclamation.co.uk](http://warwickreclamation.co.uk)

## COVENTRY DEMOLITION CO

Reclaimed & reproduction products specialising in the supply of cast iron radiators and door furniture.

Ryton Fields Farm, Wolston Lane, Ryton on Dunsmore,  
Coventry CV8 3ES

Tel +44 (0)808 196 3734

[coventry-demolition.co.uk](http://coventry-demolition.co.uk)

## YORKSHIRE

### ABACUS STONE SALES

Suppliers of reclaimed and new  
Yorkshire flagstones, walling stone,  
cobble & roof slates.

Hagg Wood Quarry, Woodhead Rd,  
Holmfirth, Huddersfield,  
West Yorkshire HD9 6PW

Tel +44 (0)7711 997026

[abacusstonesales.co.uk](http://abacusstonesales.co.uk)



### RECLAIMED BRICK COMPANY

Reclaimed building & landscaping materials. Brick matching and in-house equipment to offer safe, effective demolition services.

Clifton Works, Hillfoot Road, Sheffield, Yorkshire S3 8AA

Tel +44 (0)7435 516667

[reclaimedbrickcompany.co.uk](http://reclaimedbrickcompany.co.uk)



*Teesside Architectural Salvage*

### TEESSIDE ARCHITECTURAL SALVAGE

Reclaimed internal fixtures & fittings, church salvage and reclaimed renovation materials.

Viewing by appointment only:  
Unit 5 Robert Street, Thornaby  
Stockton-on-Tees TS17 6AN

Tel +44 (0)7738 402953

[teessidearchitecturalsalvage.co.uk](http://teessidearchitecturalsalvage.co.uk)



**SALVO  
CODE**

**Want to be listed in the next  
Salvo Pocket Guide?**

**Get in touch [shirley@salvo.co.uk](mailto:shirley@salvo.co.uk)**

## SCOTLAND



*Tradstocks*

### TRADSTOCKS

Quarrying, cutting and supplying natural stone, kerbs, setts, stone steps, coping, walling, paving and reclaimed stone features.

Viewing by appointment only:

Tradstocks Westwood

Five Sisters Business Park,  
Westwood, Livingston

EH55 8PN

Tel +44 (0)1506 873081

Tradstocks Thornhill Dunaverig  
Thornhill, Stirling FK8 3QW

Tel + 44 (0)1786 850400

[tradstocks.co.uk](http://tradstocks.co.uk)

## NORTHERN IRELAND

### WILSONS YARD

Architectural antiques, salvage and design business with both structural and decorative products. Bespoke kitchens and joinery.

123 Hillsborough Road, Dromore,  
Co Down,

Northern Ireland BT25 1QW

Tel +44 (0)28 9269 2304

[wilsonsyard.com](http://wilsonsyard.com)



*Wilsons Yard*

## FRANCE

### B.C.A. MATÉRIAUX ANCIENS

Ambassadors for Truly Reclaimed. Fine antique materials and architectural salvage, exporting worldwide.

[bca-antiquematerials.com](http://bca-antiquematerials.com)

Head office: Route de Craon,  
l'Hôtellerie-de-Flée, 49500 Segré en  
Anjou Bleu, France

English speakers

Tel +33 (0)6 07 01 90 26

Clients Français

Tel +33 (0)2 41 61 62 40



*BCA Matériaux Anciens*

BCA Matériaux Anciens, 4 Avenue de Paris,  
14370 Méry-Corbon, France  
Clients Français Tel +33 (0)2 31 23 95 87

BCA Matériaux Anciens, 6 Rue Laplace,  
14130 Pont-l'Évêque, France

### JON WEBB

Specialising in reclaimed oak and chestnut flooring, reclaimed timber with some unique pieces of architectural salvage.

Viewing by appointment only:

Lot, France

Tel +33 (0)5 65 36 22 13



*Jon Webb*

## LUXEMBOURG

### ANTIQUE FLOORS

Bespoke wood creations specialising in reclaimed and aged flooring and panels crafted in the traditional way.  
6 Rue des Artisans, L-3895 Foetz,  
Luxembourg  
Tel +352 263 133 58  
[antiquesfloors.eu](http://antiquesfloors.eu)



*Antique Floors*



*Pierre De Bourgogne*

## ITALY

### PIERRE DE BOURGOGNE

Quality antique floors specialising in Dalles de Bourgogne 16th - 17th century, exporting worldwide.  
Via G.B.Vico 63, Forte dei Marmi,  
Toscana 55042, Italy  
Tel +39 3389482831  
[pierredebourgogne.com](http://pierredebourgogne.com)

## UNITED STATES

### BARBARA ISRAEL GARDEN ANTIQUES

Fine antique garden ornament from Europe and America in a beautiful sculpture garden.  
Viewing by appointment only:  
New York, USA  
Tel +1 212 744 6281  
[bi-gardenantiques.com](http://bi-gardenantiques.com)



*Barbara Israel Garden Antiques*



SCAN ME

Subscribe to SalvoNEWS  
to receive the digital  
guides & stories to  
inspire your projects





# THE ARCHITECTURAL FORUM

[WWW.THEARCHITECTURALFORUM.COM](http://WWW.THEARCHITECTURALFORUM.COM)

ANTIQUE | BESPOKE | ALWAYS RECLAIMED



ARCHITECTURAL SALVAGE & ANTIQUES

HERTFORDSHIRE WAREHOUSE | NATIONWIDE DELIVERY