

# The Salvo Pocket Guide



The destination for reuse [SalvoWEB.com](http://SalvoWEB.com)



# THE ARCHITECTURAL FORUM

ANTIQUE | BESPOKE  
ALWAYS RECLAIMED



- FIREPLACES
- DOORS & WINDOWS
- METALWORK
- TIMBER & PANELLING
- FLOORING
- FURNITURE & MIRRORS
- KITCHEN & BATHROOM
- GARDEN & STONE
- LIGHTING
- TEAK & IROKO WORKTOPS
- CAST IRON RADIATORS
- DECORATIVE & CURIOS

NEW ITEMS ADDED TO THE WEBSITE EVERYDAY  
EVEN MORE CAN BE SEEN AT OUR 18,000ft<sup>2</sup> HERTFORDSHIRE WAREHOUSE

 0207 704 0982

[WWW.THEARCHITECTURALFORUM.COM](http://WWW.THEARCHITECTURALFORUM.COM)

Marsh Lane, Ware, Hertfordshire, SG12 9QQ

### Editors' Letter

Our aim in producing this guide is to champion reuse and share the joy of designing and building with what is already out there.

This is your sourcebook for the reuse lifestyle. Discover the longstanding community of Salvo Code businesses supplying everything from oak framed buildings to bricks, to antique stained glass to mid-mod lighting for everything to build and dress your home.

Shopping secondhand is trending, but masses of perfectly good, and in some cases better than new architectural elements, building materials and interiors are still downcycled, recycled or wasted.

This guide is designed to fit as comfortably in the pocket of a salvage newbie to seasoned designers looking to engage with the reuse economy.

Find your local reclamation suppliers, read stories about reuse, learn about Salvo's Truly Reclaimed label and get handy hints to invigorate your ideas and start your reclaimed renovation.

Becky Moles, Sara Morel and the Salvo team

SalvoWEB.com

📷 @salvoweb



BCA  
MATÉRIAUX  
ANCIENS  
*authenticité & caractère*

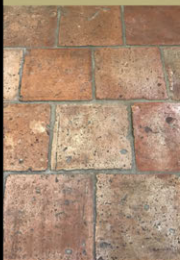
RECLAIMED FLOORBOARDS



RECLAIMED STONE FLOORING



RECLAIMED TERRA-COTTA TILES



RECLAIMED PAVING



RECLAIMED PARQUET FLOORING



WALL CLADDING / STONE WALLS



FRENCH FIREPLACES



GARDEN ARCHITECTURAL SALVAGE



INTERNATIONAL DELIVERY



*English language enquiries :*

+33 (0)6 07 01 90 26  
[david.bca@mac.com](mailto:david.bca@mac.com)



FREE QUOTE



[bca-antiquematerials.com](http://bca-antiquematerials.com)





## Contents

- 6 What is the Salvo Code?
- 8 Shopping Architectural Salvage
- 10 Handy Hints
- 16 Directory by category
- 56 Theft alerts
- 57 Deconstruction & Dismantling
- 59 SalvoNEWS
- 86 Reclamation Manifesto
- 87 Truly Reclaimed label
- 96 futuREuse FCRBE project
- 103 Directory by location & contact info
- 128 Monarchs & Design movements
- 131 Measurements

Reclaim, Reuse, Repeat since 1991.

© Salvo Ltd 2022

*The Salvo Pocket Guide, second edition*

*Printed locally by Toucan Print on FSC approved papers  
using eco-friendly inks. Cover artwork from Salvo  
magazine Autumn 2000 depicting an embossed pattern  
glass with shell motif, possibly dating from Victorian  
times by Chance & Co.*

## What is the Salvo Code?

The Salvo Code is a world-leading assurance for good practice in sourcing for businesses that buy and sell architectural salvage, antiques, garden ornament and reclaimed building material. The Salvo Code aims to give people greater confidence, in particular, that items which they buy have not been stolen or removed from protected historic buildings without permission.

Most dealers have sensible buying procedures, but the Salvo Code is more formal, understandable and obvious to buyers and sellers. The Code flags that a business is part of the peer-reviewed community and meets the highest standards.



*The Salvo Code crane logo is a symbol of vigilance. Ancient legend has it that a crane stands guard holding a stone in its claw, which drops to wake it if the crane falls asleep.*



***Clockwise from top  
left: Salvo Code  
members  
Architectural  
Heritage, LASSCO  
Three Pigeons,  
Mongers  
Architectural  
Salvage, Romsey  
Reclamation,  
Architectural  
Forum***

# Shopping Architectural Salvage for the first time?

Get to know the lingo

**Architectural Salvage** defines any item reclaimed from a building or exterior being dismantled or remodelled.

Architectural salvage is made up of these divisions: Architectural Antiques, Architectural Elements, Reclaimed Building Materials and Modern Demolition Salvage.

**Architectural Antiques** - Features, fixtures or fittings that have been removed from an old building; usually, architectural antiques have a decorative style and involved a high degree of workmanship in their original manufacture.

**Reclaimed Building Materials** - Materials that were used to create the fabric of a building. Examples include bricks, tiles, roof slates, walling stone, flagstones and setts, floorboards and oak beams. These materials have usually been cleaned, sorted and palletised in reclamation yards and can vary from heritage building materials made by hand to materials removed from more recent buildings.



**Modern Demolition Salvage** - Elements and materials that have been removed from modern buildings, usually machine-made. Examples include pine joists, RSJs, modern bathroom fittings and flush doors.

**Salvage** - From the French word *salver* meaning "to save" which also inspired our name, Salvo

**Upcycle** - Reuse in a way that gives products more value. The word upcycling conjures up visions of painted furniture, but it was originally coined by Salvo founder, Thornton Kay with salvage dealer Reiner Pilz whilst despairing about the waste in European demolition under the name of recycling in the early 90s. Reiner called it downcycling and Thornton replied, "what we need is upcycling."

**Reuse Economy** - Delivers true circularity by maximising resources and embodied carbon in the reuse of materials and products at their highest value, with minimum downcycling and waste.

You can find ideas throughout the guide, but over the page you will see some hints to get you started...

## **Handy Hints**

- Look out for suppliers that adhere to the Salvo Code for greater assurance and transparency. Use this guide to find your closest Salvo Code members.
- Nothing beats walking around a salvage yard or reclamation showroom. They vary greatly from curated indoor room sets with architectural antiques to yards where you can explore more materials as well as hidden treasures. Always keep a list of measurements for the spaces you are looking to source for and don't forget your tape measure.
- Some suppliers have a lot of their inventory online, and numerous storage places so it is good to ring ahead of your visit if you are interested in looking at something in particular. You can also double check their opening hours as some businesses operate by appointment only.
- Chat with reclamation dealers about your project. Many suppliers also offer sourcing services or they might be able to recommend available alternatives.
- Ask if goods are fit for your purpose before you buy. Dealers are happy to help.
- Try to buy architectural salvage first then make design decisions based on what is available - this will make your hunt much easier.
- Ask about the history of the item as salvage usually has more stories than Instagram. Items with provenance also add value.

- Don't take your negotiating style from salvage TV shows. Of course, everyone loves a great deal, but it is worth bearing in mind that the time taken to rescue and restore is also factored into the price tag.
- Refund policies vary, but remember that consumer protection laws still apply when buying reclaimed items from a retailer or trader.
- Buying online is easier than ever when shopping from reputable sources. Most of these tips will still apply from your screen. Ask questions and always check the delivery options so you can factor in the shipping costs.
- Where possible, reuse your own salvage. Try not to skip it and if you cannot reuse it yourself then perhaps you can circulate it on SalvoWEB.
- Modern regulations mean that some kinds of electrical and plumbing goods may need to be modified before use.
- Chat with designers and builders about your reuse ambitions and make sure they are reclamation friendly. Ideally, choose people with experience of working with salvage before you appoint anyone.
- Be mindful and try to use reversible fixings - screws, nails and lime mortar for future reclaimability.
- Think inside the box (of what's available) to think outside the box. Be creative, personalise, and experiment.



## Reuse for the world you want

Salvo matches something reclaimed or recrafted with someone that wants to reuse it.

Shop directly on SalvoWEB or search listings for items for sale, which include things like architectural salvage, antiques, reclaimed building material and home fashion.

Salvo is a resource that supports reuse by circulating information through our established community. Everyone from DIYers to designers, architects and builders can use free tools like dismantling and wanted alerts to source and sell through Salvo's network.







# Shop



You can now Shop directly on SalvoWEB.  
Simply look for items with a Buy Now button  
offered exclusively by Salvo Code members.





# Source

Explore listings for items for sale, which are advertised by businesses and private individuals.



Can't find what you are looking for?

Discover the directory to find your local reclamation yard or salvage showroom or post a Wanted alert with details of what you are after.

# Sell

Attract customers and avoid much of the heavy lifting by presenting your items in situ on SalvoWEB.



If renovating, reduce sending architectural features and materials to landfill by using Salvo to sell them. Listing pieces as soon as you can will maximise their chance of a second life.

You can post free Demolition alerts to connect with potential buyers well in advance of planned dismantling and demolition.

Items can take anywhere between 30 seconds to 3 years to sell. If you are short on time, enhance your listing to be featured on the homepage

# Fine Architectural Antiques



*Above: Antique 18th Century George III statuary white marble fire surround from Nostalgia*



# FINE ARCHITECTURAL ANTIQUES, STATUARY & ANTIQUE GARDEN ORNAMENT

Salvo Code dealers (and an auctioneer) with items for sale for more than £10,000 such as a fine panelled room, decorative wrought iron gateway, ancient oak staircase, exquisite stone or marble chimneypiece, antique carved stone or marble conservatory statue, or an art deco parquetry floor.

Simon Wharton Antiques .....	Somerset
Olliff's Architectural Antiques .....	Bristol
Rose Green Tiles & Reclamation .....	Bristol
Architectural Heritage .....	Gloucestershire
Original Architectural Antiques ....	Gloucestershire
Ronson Reclaim .....	Gloucestershire
Winchcombe Reclamation .....	Gloucestershire
Lassco Three Pigeons .....	Oxfordshire
Summers Place Auctions .....	Sussex
Antique Buildings .....	Surrey
Nicholas Gifford-Mead Antiques .....	London
Westland London .....	London
Architectural Forum .....	Hertfordshire
Architectural Salvage Source .....	Hertfordshire
English Salvage .....	Hertfordshire
UK Architectural Antiques .....	Staffordshire
Nostalgia .....	Cheshire
Abacus Stone Sales .....	Yorkshire
Wilson Reclamation Services .....	Cumbria
Wilsons Yard.....	Co Down

BCA Matériaux Anciens . Loire, Normandy, France  
Barbara Israel Garden Antiques ... New York, USA





# FIREPLACES, CHIMNEYPieces, GRATES & fire tools

Stax Reclamation .....	Cornwall
Bath Reclamation .....	Somerset
Simon Wharton Antiques .....	Somerset
South West Reclamation .....	Somerset
Ace Reclamation .....	Dorset
Dorset Reclamation .....	Dorset
Olliff's Architectural Antiques .....	Bristol
Rose Green Tiles & Reclamation .....	Bristol
Original Architectural Antiques ....	Gloucestershire
Ronson Reclaim .....	Gloucestershire
Winchcombe Reclamation .....	Gloucestershire
Lassco Three Pigeons .....	Oxfordshire
J Brant Reclamation .....	Berkshire
Romsey Reclamation .....	Hampshire
Comley Reclaim .....	Surrey
Symonds Salvage .....	Kent
Nicholas Gifford-Mead Antiques .....	London
Retrouvius .....	London
Westland London .....	London
Architectural Forum .....	Hertfordshire
Architectural Salvage Source .....	Hertfordshire
V&V Reclamation .....	Hertfordshire
AB Reclamation .....	Suffolk
Treesave Reclamation .....	Suffolk
Mongers Architectural Salvage .....	Norfolk
Morways Reclaimers .....	Norfolk
Real Original .....	Norfolk
English Salvage .....	Herefordshire
Warehouse 701 .....	Herefordshire
The Old Yard .....	Shropshire
Coventry Demolition Company .....	Warwickshire
Warwick Reclamation .....	Warwickshire
UK Architectural Antiques .....	Staffordshire
Cawarden .....	Staffordshire

Watling Reclamation .....	Northamptonshire
Beeston Reclamation .....	Cheshire
Cheshire Demolition & Excavation .....	Cheshire
Nostalgia .....	Cheshire
Reclaimed World .....	Cheshire
Insitu Architectural Salvage .....	Manchester
Wilson Reclamation Services .....	Cumbria
Olde Worlde Fireplaces .....	Tyne & Wear
Teesside Architectural Salvage .....	Teesside
Wilsons Yard .....	Co Down

BCA Matériaux Anciens . Loire, Normandy, France

## HANDY HINT

If in doubt about the historic style of your home, ask a salvage dealer to point out fireplaces of a similar date. If you are not bothered about staying true to the period, buy something you like which might then inspire your personal theme for the room.



# Bathrooms



*Above: Mongers Architectural Salvage showroom  
photo: @reclaimedwoman Instagram*



# BATHROOMS

for TOWEL RAILS please see the RADIATOR section

Baths, basins, taps, wc pans, cisterns, vanity mirrors, bidets from early times through to 20th century Art Deco or later. Buyers: check to see if items have been restored and repaired, tested, with metallic lead removed, and adapted to fit modern plumbing systems (most will have). Ask your plumber if they can fit reclaimed items before you hire them. The dealer who supplies you may know of reclamation friendly plumbers, so ask when you buy. For plumbers who need assurance about how old fittings comply with water bylaws, please ask for a factsheet.

The Original Bath Company .....	Devon
Ace Reclamation .....	Dorset
Dorset Reclamation .....	Dorset
Olliff's Architectural Antiques .....	Bristol
Rose Green Tiles & Reclamation .....	Bristol
Comley Reclaim .....	Surrey
Catchpole & Rye .....	Kent & London
Symonds Salvage .....	Kent
Architectural Forum .....	Hertfordshire
V&V Reclamation .....	Hertfordshire
AB Reclamation .....	Suffolk
Treesave Reclamation .....	Suffolk
Mooney Demolition .....	Norfolk
Mongers Architectural Salvage .....	Norfolk
English Salvage .....	Herefordshire
Coventry Demolition Company .....	Warwickshire
UK Architectural Antiques .....	Staffordshire
Beeston Reclamation .....	Cheshire
Nostalgia .....	Cheshire
Insitu Architectural Salvage .....	Manchester
Wilson Reclamation Services .....	Cumbria
Wilsons Yard .....	Co Down

BCA Matériaux Anciens . Loire, Normandy, France





## KITCHENS & accessories

Stax Reclamation .....	Cornwall
Trinity Marine .....	Devon
Ace Reclamation .....	Dorset
Dorset Reclamation .....	Dorset
Olliff's Architectural Antiques .....	Bristol
Source Antiques .....	Bristol
Lassco Three Pigeons .....	Oxfordshire
Comley Reclaim .....	Surrey
The Vintage Fridge Company .....	Surrey
Woodstoneuk .....	Surrey
Symonds Salvage .....	Kent
Retrouvius .....	London
Architectural Forum .....	Hertfordshire
V&V Reclamation .....	Hertfordshire
AB Reclamation .....	Suffolk
Mongers Architectural Salvage .....	Norfolk
Mooney Demolition .....	Norfolk
Real Original .....	Norfolk
English Salvage .....	Herefordshire
The Old Yard .....	Shropshire
Coventry Demolition Company .....	Warwickshire
UK Architectural Antiques .....	Staffordshire
Watling Reclamation .....	Northamptonshire
Beeston Reclamation .....	Cheshire
Insitu Architectural Salvage .....	Manchester
Wilsons Reclamation Services .....	Cumbria
Wilsons Yard .....	Co Down

### HANDY HINT

Be innovative - use old things for new purposes - like vintage stainless steel luggage racks for pot hangers or old water tank slate for shelving, which are especially good for pantries and larders.

## BYGONES, PROPS & COLLECTABLES

Stax Reclamation .....	Cornwall
Trinity Marine .....	Devon
Ace Reclamation .....	Dorset
Dorset Reclamation .....	Dorset
Olliff's Architectural Antiques .....	Bristol
Rose Green Tiles & Reclamation .....	Bristol
Ronson Reclaim .....	Gloucestershire
LASSCO Three Pigeons .....	Oxfordshire
J Brant Reclamation .....	Berkshire
Romsey Reclamation .....	Hampshire
Comley Reclaim .....	Surrey
Woodstoneuk .....	Surrey
Symonds Salvage .....	Kent
Retrouvius .....	London
Antiques By Design .....	Essex
Architectural Forum .....	Hertfordshire
Architectural Salvage Source .....	Hertfordshire
V&V Reclamation .....	Hertfordshire
AB Reclamation .....	Suffolk
Treesave Reclamation .....	Suffolk
Mongers Architectural Salvage .....	Norfolk
Real Original .....	Norfolk
English Salvage .....	Herefordshire
Warehouse 701 .....	Herefordshire
The Old Yard .....	Shropshire
Coventry Demolition Company .....	Warwickshire
Warwick Reclamation .....	Warwickshire
Cawarden .....	Staffordshire
UK Architectural Antiques .....	Staffordshire
Glens Reclaim .....	Derbyshire
Beeston Reclamation .....	Cheshire
Cheshire Demolition & Excavation .....	Cheshire
Nostalgia .....	Cheshire
Reclaimed World .....	Cheshire
Insitu Architectural Salvage .....	Manchester
Abacus Stone Sales .....	Yorkshire
Reclaimed Brick Company .....	Yorkshire
Chilton Church Antiques .....	Lancashire
Olde Worlde Fireplaces .....	Tyne & Wear
Teesside Architectural Salvage .....	Teesside
Wilsons Yard .....	Co Down



# INSITU

Architectural Salvage

Insitumanchester.com

252 Chester Road, Manchester



Architectural salvage and classic design pieces since 1984

Architectural  
Flooring & Timber  
Furniture & Lighting  
Windows & Glass  
Radiators



+44 (0)7780 993 773

+44 (0)161 839 5525

info@insitumanchester.com

# ANTIQUE, VINTAGE and RECREATED FURNITURE, DECORATIVE ANTIQUES and MIRRORS

Stax Reclamation .....	Cornwall
Trinity Marine .....	Devon
Simon Wharton Antiques .....	Somerset
Dorset Reclamation .....	Dorset
Olliff's Architectural Antiques .....	Bristol
Source Antiques .....	Bristol
Ronson Reclaim .....	Gloucestershire
Winchcombe Reclamation .....	Gloucestershire
Lassco Three Pigeons .....	Oxfordshire
Cast Iron Reclamation Company .....	Surrey
Copley Reclaim .....	Surrey
Woodstoneuk .....	Surrey
Symonds Salvage .....	Kent
Retrouvius .....	London
Westland London .....	London
Antiques By Design .....	Essex
Architectural Forum .....	Hertfordshire
Architectural Salvage Source .....	Hertfordshire
Heritage Reclamation .....	Hertfordshire
V&V Reclamation .....	Hertfordshire
Treesave Reclamation .....	Suffolk
Mongers Architectural Salvage .....	Norfolk
Real Original .....	Norfolk
English Salvage .....	Herefordshire
Warehouse 701 .....	Herefordshire
The Old Yard .....	Shropshire
Coventry Demolition Company .....	Warwickshire
Warwick Reclamation .....	Warwickshire
Cawarden .....	Staffordshire
UK Architectural Antiques .....	Staffordshire
Watling Reclamation .....	Northamptonshire
Beeston Reclamation .....	Cheshire
Nostalgia .....	Cheshire
Reclaimed World .....	Cheshire
Insitu Architectural Salvage .....	Manchester
Chilton Church Antiques .....	Lancashire
Teesside Architectural Salvage .....	Teesside
Wilsons Reclamation Services .....	Cumbria
Wilsons Yard .....	Co Down

BCA Matériaux Anciens . Loire, Normandy, France



# Lighting



*Above: Vintage lighting from the collection at Insitu Architectural Salvage*



# LIGHTING

Stax Reclamation .....	Cornwall
Trinity Marine .....	Devon
Ace Reclamation .....	Dorset
Dorset Reclamation .....	Dorset
Olliff's Architectural Antiques .....	Bristol
Rose Green Tiles & Reclamation .....	Bristol
Source Antiques .....	Bristol
Ronson Reclaim .....	Gloucestershire
Lassco Three Pigeons .....	Oxfordshire
Summers Place Auctions .....	Sussex
Cast Iron Reclamation Company .....	Surrey
Woodstoneuk .....	Surrey
Retrouvius .....	London
Westland London .....	London
Antiques By Design .....	Essex
Architectural Forum .....	Hertfordshire
Architectural Salvage Source .....	Hertfordshire
V&V Reclamation.....	Hertfordshire
Treesave Reclamation .....	Suffolk
Mongers Architectural Salvage .....	Norfolk
Real Original .....	Norfolk
English Salvage .....	Herefordshire
The Old Yard .....	Shropshire
Warehouse 701 .....	Herefordshire
Coventry Demolition Company .....	Warwickshire
Warwick Reclamation .....	Warwickshire
UK Architectural Antiques .....	Staffordshire
Watling Reclamation.....	Northamptonshire
Beeston Reclamation .....	Cheshire
Nostalgia .....	Cheshire
Reclaimed World .....	Cheshire
Insitu Architectural Salvage .....	Manchester
Chilton Church Antiques .....	Lancashire
Teesside Architectural Salvage .....	Teesside
Wilson Reclamation Services .....	Cumbria
Wilsons Yard .....	Co Down



Antique



Garden Ornament

*Above: An early 18th Century Portland Stone Sundial from the collection at Architectural Heritage*

# ANTIQUE GARDEN ORNAMENT

Stax Reclamation .....	Cornwall
Bath Reclamation .....	Somerset
Simon Wharton Antiques .....	Somerset
Ace Reclamation .....	Dorset
Dorset Reclamation .....	Dorset
Olliff's Architectural Antiques .....	Bristol
Rose Green Tiles & Reclamation .....	Bristol
Architectural Heritage .....	Gloucestershire
Original Architectural Antiques ....	Gloucestershire
Ronson Reclaim .....	Gloucestershire
Winchcombe Reclamation .....	Gloucestershire
Lasso Three Pigeons .....	Oxfordshire
J Brant Reclamation .....	Berkshire
Summers Place Auctions .....	Sussex
Antique Buildings .....	Surrey
Comley Reclaim .....	Surrey
Woodlands Farm Nursery Reclamation ....	Surrey
Symonds Salvage .....	Kent
Nicholas Gifford-Mead Antiques .....	London
Westland Antiques .....	London
Antiques by Design.....	Essex
Architectural Forum .....	Hertfordshire
Architectural Salvage Source .....	Hertfordshire
V&V Reclamation .....	Hertfordshire
AB Reclamation .....	Suffolk
Tower Reclaim .....	Suffolk
Treesave Reclamation .....	Suffolk
Mooney Demolition .....	Norfolk
Mongers Architectural Salvage .....	Norfolk
Morways Reclaimers .....	Norfolk
Real Original .....	Norfolk
English Salvage .....	Herefordshire
Warehouse 701 .....	Herefordshire
The Old Yard .....	Shropshire
Coventry Demolition Company .....	Warwickshire
Warwick Reclamation .....	Warwickshire
Cawarden .....	Staffordshire
UK Architectural Antiques .....	Staffordshire
Watling Reclamation .....	Northamptonshire
Glens Reclaim .....	Derbyshire





Beeston Reclamation .....	Cheshire
Cheshire Demolition & Excavation .....	Cheshire
Nostalgia .....	Cheshire
Reclaimed World .....	Cheshire
Insitu Architectural Salvage .....	Manchester
Abacus Stone Sales .....	Yorkshire
Reclaimed Brick Company .....	Yorkshire
Wilson Reclamation Services .....	Cumbria
Teesside Architectural Salvage .....	Tyne & Wear
Wilsons Yard .....	Co Down

BCA Matériaux Anciens . Loire, Normandy, France  
Pierre de Bourgogne ..... Tuscany, Italy  
Barbara Israel Garden Antiques .. New York, USA

## HANDY HINTS

Use bird poo to encourage lichen on old stone, concrete and clayware (yoghurt does not work).

Watch out for reproduction being sold as antique. Most garden ornament is copied from antique originals. Some might be made in Georgian or Victorian times but copied from Greek or Roman originals via the Italian Renaissance. Some might be valuable lead copies from 1910. Some might be antiqued copies from 1970-90. Some might be more recent but distressed to look older.





LASSCO

ARCHITECTURAL SALVAGE

LONDON & OXFORD

[www.lassco.co.uk](http://www.lassco.co.uk)





# STAIRCASES & STEPS

in WOOD, STONE or METAL

Architectural Heritage .....	Gloucestershire
Original Architectural Antiques ....	Gloucestershire
Ronson Reclaim .....	Gloucestershire
Lassco Three Pigeons .....	Oxfordshire
Architectural Forum .....	Hertfordshire
V&V Reclamation .....	Hertfordshire
Mongers Architectural Salvage .....	Norfolk
Morways Reclaimers .....	Norfolk
English Salvage .....	Herefordshire
Coventry Demolition Company .....	Warwickshire
UK Architectural Antiques .....	Staffordshire
Cheshire Demolition & Excavation .....	Cheshire
Abacus Stone Sales .....	Yorkshire
Reclaimed Brick Company .....	Yorkshire
Teesside Architectural Salvage .....	Teesside
Tradstocks .....	Stirlingshire & West Lothian
Wilsons Yard .....	Co Down

BCA Matériaux Anciens . Loire, Normandy, France  
Pierre de Bourgogne .....

Tuscany, Italy

## HANDY HINT

Finding a staircase that can be fitted into an existing house is trickier because it is a three dimensional structure. However, if you are building a new building, or converting an open space like a barn, then it is easy to fit an old staircase.

# STATUARY

Stax Reclamation .....	Cornwall
Simon Wharton Antiques .....	Somerset
Dorset Reclamation .....	Dorset
Olliff's Architectural Antiques .....	Bristol
Rose Green Tiles & Reclamation .....	Bristol
Architectural Heritage .....	Gloucestershire
Original Architectural Antiques ....	Gloucestershire
Ronson Reclaim .....	Gloucestershire
Lasso Three Pigeons .....	Oxfordshire
J Brant Reclamation .....	Berkshire
Summers Place Auctions .....	Sussex
Nicholas Gifford-Mead Antiques .....	London
Westland London .....	London
Architectural Forum .....	Hertfordshire
Architectural Salvage Source .....	Hertfordshire
V&V Reclamation .....	Hertfordshire
AB Reclamation .....	Suffolk
Tower Reclaim .....	Suffolk
Mongers Architectural Salvage .....	Norfolk
Morways Reclaimers .....	Norfolk
Real Original .....	Norfolk
English Salvage .....	Herefordshire
The Old Yard .....	Shropshire
Coventry Demolition Company .....	Warwickshire
Warwick Reclamation .....	Warwickshire
UK Architectural Antiques .....	Staffordshire
Watling Reclamation.....	Northamptonshire
Beeston Reclamation .....	Cheshire
Nostalgia .....	Cheshire
Abacus Stone Sales .....	Yorkshire
Wilson Reclamation Services .....	Cumbria
Wilsons Yard .....	Co Down

BCA Matériaux Anciens . Loire, Normandy, France  
Barbara Israel Garden Antiques .. New York, USA





# DOORS & or door furniture

Stax Reclamation .....	Cornwall
Trinity Marine .....	Devon
Simon Wharton Antiques .....	Somerset
South West Reclamation .....	Somerset
Ace Reclamation .....	Dorset
Dorset Reclamation .....	Dorset
Olliff's Architectural Antiques .....	Bristol
Rose Green Tiles & Reclamation .....	Bristol
Original Architectural Antiques ....	Gloucestershire
Ronson Reclaim .....	Gloucestershire
Lassco Three Pigeons .....	Oxfordshire
J Brant Reclamation .....	Berkshire
Romsey Reclamation .....	Hampshire
Comley Reclaim .....	Surrey
Symonds Salvage .....	Kent
Retrouvius .....	London
Westland London .....	London
Architectural Forum .....	Hertfordshire
Architectural Salvage Source .....	Hertfordshire
V&V Reclamation .....	Hertfordshire
AB Reclamation .....	Suffolk
Tower Reclaim .....	Suffolk
Treesave Reclamation .....	Suffolk
Mongers Architectural Salvage .....	Norfolk
Morways Reclaimers .....	Norfolk
English Salvage .....	Herefordshire
Warehouse 701 .....	Herefordshire
The Old Yard .....	Shropshire
Coventry Demolition Company .....	Warwickshire
Warwick Reclamation .....	Warwickshire
UK Architectural Antiques .....	Staffordshire
Watling Reclamation .....	Northamptonshire
Beeston Reclamation .....	Cheshire
Cheshire Demolition & Excavation .....	Cheshire
Reclaimed World .....	Cheshire

Insitu Architectural Salvage ..... Manchester  
 Wilson Reclamation Services ..... Cumbria  
 Olde Worlde Fireplaces ..... Tyne & Wear  
 Teesside Architectural Salvage ..... Teesside  
 Wilsons Yard ..... Co Down

BCA Matériaux Anciens . Loire, Normandy, France

## HANDY HINTS

A reclaimed door brings a unique feeling to your home with tactile timber, traditional craft details and enduring design. If you are building or undertaking an extension project then buy reclaimed doors before you design and build the openings so you can be sure that they fit.

It is worth noting that older period properties with seemingly matching doors often turn out to be of different sizes anyway. Embrace the character as you are unlikely to find the exact number of identical sets. Instead, keep an eye out for similar reclaimed architrave.



# WILSONS YARD



- Cast Iron Radiators
- Reclaimed Flooring
- Bespoke Doors
- Bespoke Kitchens
- Furniture
- Fireplaces
- Garden Features
- Paving & Kerbs
- Gates & Railings
- Roof Slates
- Lighting
- Bathroom

NEW STOCK ARRIVING DAILY

DELIVERY AVAILABLE

**+44(0) 2892 692304**

**WWW.WILSONSYARD.COM**



# WINDOWS & STAINED GLASS

South West Reclamation .....	Somerset
Ace Reclamation .....	Dorset
Dorset Reclamation .....	Dorset
Olliff's Architectural Antiques .....	Bristol
Rose Green Tiles & Reclamation .....	Bristol
Original Architectural Antiques ....	Gloucestershire
Lassco Three Pigeons .....	Oxfordshire
Antique Buildings .....	Surrey
Comley Reclaim .....	Surrey
Symonds Salvage .....	Kent
Retrouvius .....	London
Westland London .....	London
Architectural Forum .....	Hertfordshire
Architectural Salvage Source .....	Hertfordshire
V&V Reclamation .....	Hertfordshire
AB Reclamation .....	Suffolk
Tower Reclaim .....	Suffolk
Treesave Reclamation .....	Suffolk
Mongers Architectural Salvage .....	Norfolk
Real Original .....	Norfolk
English Salvage .....	Herefordshire
Warehouse 701 .....	Herefordshire
The Old Yard .....	Shropshire
Coventry Demolition Company .....	Warwickshire
Warwick Reclamation .....	Warwickshire
UK Architectural Antiques .....	Staffordshire
Watling Reclamation .....	Northamptonshire
Cheshire Demolition & Excavation .....	Cheshire
Reclaimed World .....	Cheshire
Insitu Architectural Salvage .....	Manchester
Abacus Stone Sales .....	Yorkshire
Chilton Church Antiques .....	Lancashire
Wilson Reclamation Services .....	Cumbria
Olde Worlde Fireplaces .....	Tyne & Wear
Teesside Architectural Salvage .....	Teesside
Wilsons Yard .....	Co Down



# Reclaimed Radiators



*Above: Antique decorative radiator from the collection at Reclaimed Radiators*

# RADIATORS

Stax Reclamation .....	Cornwall
Reclaimed Radiators .....	Somerset
South West Reclamation .....	Somerset
Ace Reclamation .....	Dorset
Dorset Reclamation .....	Dorset
Olliff's Architectural Antiques .....	Bristol
Rose Green Tiles & Reclamation .....	Bristol
Lassco Three Pigeons .....	Oxfordshire
Cast Iron Reclamation Company .....	Surrey
Comley Reclaim .....	Surrey
Symonds Salvage .....	Kent
Architectural Forum .....	Hertfordshire
Architectural Salvage Source .....	Hertfordshire
V&V Reclamation .....	Hertfordshire
AB Reclamation .....	Suffolk
Mongers Architectural Salvage .....	Norfolk
Morways Reclaimers.....	Norfolk
English Salvage .....	Herefordshire
Warehouse 701 .....	Herefordshire
Coventry Demolition Company .....	Warwickshire
Warwick Reclamation .....	Warwickshire
UK Architectural Antiques .....	Staffordshire
Watling Reclamation.....	Northamptonshire
Insitu Architectural Salvage .....	Manchester
Teesside Architectural Salvage .....	Teesside
Wilsons Yard .....	Co Down

## HANDY HINT

Think about choosing a matt black finish on rads for the highest radiant heat output.



# Reclaimed



# Wood Flooring


*Above: Truly Reclaimed antique remilled oak chevron from BCA Matériaux Anciens*

# RECLAIMED WOOD FLOORING

including machine made, adzed and pit sawn floorboards, roofboard, wood strip, woodblock and oak parquet de Versailles. Timber includes softwood - cedar, pine, spruce, larch; temperate hardwoods - beech, chestnut, elm, oak; tropical hardwoods - mahogany, opepe, panga panga, teak, wenge and many more

Stax Reclamation .....	Cornwall
South West Reclamation .....	Somerset
Ace Reclamation .....	Dorset
Dorset Reclamation .....	Dorset
Olliff's Architectural Antiques .....	Bristol
Rose Green Tiles & Reclamation .....	Bristol
Original Architectural Antiques ....	Gloucestershire
Ronson Reclaim .....	Gloucestershire
Winchcombe Reclamation .....	Gloucestershire
TMO Reclaim .....	Buckinghamshire
Lassco Three Pigeons .....	Oxfordshire
J Brant Reclamation .....	Berkshire
Romsey Reclamation .....	Hampshire
Antique Buildings .....	Surrey
Cast Iron Radiator Company .....	Surrey
Comley Reclaim .....	Surrey
Woodstoneuk .....	Surrey
Symonds Salvage .....	Kent
The Antique Oak Flooring Company .....	Kent
Deja Wood .....	London
Reclaimed Ltd .....	London
Antique Wooden Floors .....	Essex
Ashwells Reclaimed Timber .....	Essex
Architectural Forum .....	Hertfordshire
Architectural Salvage Source .....	Hertfordshire
Heritage Reclamation.....	Hertfordshire
V&V Reclamation .....	Hertfordshire





AB Reclamation .....	Suffolk
Tower Reclaim .....	Suffolk
Treesave Reclamation .....	Suffolk
Mooney Demolition Co .....	Norfolk
Mongers Architectural Salvage .....	Norfolk
Morways Reclaimers .....	Norfolk
Warehouse 701 .....	Herefordshire
English Salvage .....	Herefordshire
Coventry Demolition Company .....	Warwickshire
Warwick Reclamation .....	Warwickshire
Cawarden .....	Staffordshire
UK Architectural Antiques .....	Staffordshire
Watling Reclamation .....	Northamptonshire
Beeston Reclamation .....	Cheshire
Cheshire Demolition & Excavation .....	Cheshire
Reclaimed World .....	Cheshire
Insitu Architectural Salvage .....	Manchester
Pine Supplies .....	Lancashire
Reclaimed Brick Company .....	Yorkshire
Wilson Reclamation Services .....	Cumbria
Teesside Architectural Salvage .....	Teesside
Wilsons Yard .....	Co Down

BCA Matériaux Anciens . Loire, Normandy, France  
 Antique Floors ..... Luxembourg  
 Pierre de Bourgogne ..... Tuscany, Italy

## HANDY HINTS

When laying reclaimed woodblock (sometimes called parquet) start in the middle and work outwards.

Reclaimed woodblock thicknesses vary from thinner in the centre of a room to thicker around the edges. Sort the woodblock into piles of different thicknesses and lay similar thicknesses together to avoid so much sanding.

THE  
**ANTIQUE OAK FLOORING**  
CO.



*Discover why choosing Truly Reclaimed flooring is a design ethos, rather than a single aesthetic.*

*The Antique Oak Flooring Company is renowned for its supply of characterful reclaimed flooring for period restoration and contemporary design projects.*

**reclaimedflooring.co.uk**

**info@antiqueoakflooring.com    +44 (0) 773326 3540**

**The Antique Oak Flooring Company, Ashford, Kent, UK**



# RECLAIMED TIMBER

including beams, bressemeres, joists, purlins, rafters  
and RAILWAY SLEEPERS or RAILROAD TIES

Stax Reclamation .....	Cornwall
Bath Reclamation .....	Somerset
South West Reclamation .....	Somerset
Ace Reclamation .....	Dorset
Dorset Reclamation .....	Dorset
Rose Green Tiles & Reclamation .....	Bristol
Original Architectural Antiques ....	Gloucestershire
Ronson Reclaim .....	Gloucestershire
Winchcombe Reclamation .....	Gloucestershire
TMO Reclaim .....	Buckinghamshire
J Brant Reclamation .....	Berkshire
Romsey Reclamation .....	Hampshire
Antique Buildings .....	Surrey
Comley Reclaim .....	Surrey
Symonds Salvage .....	Kent
Reclaimed Ltd.....	London
Ashwells Reclaimed Timber .....	Essex
Architectural Forum .....	Hertfordshire
Architectural Salvage Source .....	Hertfordshire
Heritage Reclamation .....	Hertfordshire
V&V Reclamation .....	Hertfordshire
AB Reclamation .....	Suffolk
Tower Reclaim .....	Suffolk
Treesave Reclamation .....	Suffolk
Mooney Demolition .....	Norfolk
Mongers Architectural Salvage .....	Norfolk
Morways Reclaimers .....	Norfolk
English Salvage .....	Herefordshire
Warehouse 701 .....	Herefordshire
Coventry Demolition Company .....	Warwickshire
Warwick Reclamation .....	Warwickshire
Cawarden .....	Staffordshire
UK Architectural Antiques .....	Staffordshire
Watling Reclamation .....	Northamptonshire
Beeston Reclamation .....	Cheshire
Cheshire Demolition & Excavation .....	Cheshire
Reclaimed World .....	Cheshire
Abacus Stone Sales .....	Yorkshire
Reclaimed Brick Company .....	Yorkshire
Pine Supplies .....	Lancashire
Wilson Reclamation Services .....	Cumbria
Wilsons Yard .....	Co Down

BCA Matériaux Anciens . Loire, Normandy, France  
Antique Floors .....

Luxembourg

# RECLAIMED BRICKS

including air bricks, coping, decorative, flared headers, handmade, pressed, string course, wirecut

Bath Reclamation .....	Somerset
South West Reclamation .....	Somerset
Ace Reclamation .....	Dorset
Dorset Reclamation .....	Dorset
Rose Green Tiles & Reclamation .....	Bristol
Ronson Reclaim .....	Gloucestershire
Winchcombe Reclamation .....	Gloucestershire
LRBM .....	Buckinghamshire
TMO Reclaim .....	Buckinghamshire
J Brant Reclamation .....	Berkshire
Romsey Reclamation .....	Hampshire
Antique Buildings .....	Surrey
Comley Reclaim .....	Surrey
Woodstoneuk .....	Surrey
Woodlands Farm Nursery Reclamation .....	Surrey
Symonds Salvage .....	Kent
London Reclaimed Brick Merchants (LRBM) London	
Architectural Forum .....	Hertfordshire
V&V Reclamation .....	Hertfordshire
Architectural Salvage Source .....	Hertfordshire
3A Roofing .....	Suffolk
AB Reclamation .....	Suffolk
Tower Reclaim .....	Suffolk
Treesave Reclamation .....	Suffolk
Mooney Demolition .....	Norfolk
Morways Reclaimers .....	Norfolk
Warehouse 701 .....	Herefordshire
Coventry Demolition Company .....	Warwickshire
Warwick Reclamation .....	Warwickshire
Cawarden .....	Staffordshire
Watling Reclamation .....	Northamptonshire
Glens Reclaim .....	Derbyshire
Beeston Reclamation .....	Cheshire
Cheshire Demolition & Excavation .....	Cheshire
Reclaimed World .....	Cheshire
Abacus Stone Sales .....	Yorkshire
Reclaimed Brick Company .....	Yorkshire
Wilsons Yard .....	Co Down

BCA Matériaux Anciens . Loire, Normandy, France





## RECLAIMED FLAGSTONES

including cobbles, floor tiles, kerb, marble,  
pamments, pavers, setts

Stax Reclamation .....	Cornwall
Bath Reclamation .....	Somerset
Natural Stone Consulting .....	Somerset
South West Reclamation .....	Somerset
Ace Reclamation .....	Dorset
Dorset Reclamation .....	Dorset
Rose Green Tiles & Reclamation .....	Bristol
Original Architectural Antiques ....	Gloucestershire
Ronson Reclaim .....	Gloucestershire
Winchcombe Reclamation .....	Gloucestershire
Lassco Three Pigeons .....	Oxfordshire
LRBM .....	Buckinghamshire
TMO Reclaim .....	Buckinghamshire
J Brant Reclamation .....	Berkshire
Natural Stone Consulting .....	Berkshire
Romsey Reclamation .....	Hampshire
Antique Buildings .....	Surrey
Comley Reclaim .....	Surrey
Woodlands Farm Nursery Reclamation ....	Surrey
Symonds Salvage .....	Kent
London Reclaimed Brick Merchants(LRBM)	London
Architectural Forum .....	Hertfordshire
Architectural Salvage Source .....	Hertfordshire
V&V Reclamation .....	Hertfordshire
AB Reclamation .....	Suffolk
Tower Reclaim .....	Suffolk
Treesave Reclamation .....	Suffolk
Mooney Demolition .....	Norfolk
Mongers Architectural Salvage .....	Norfolk
Morways Reclaimers .....	Norfolk
Real Original .....	Norfolk
English Salvage .....	Herefordshire
Warehouse 701 .....	Herefordshire
Coventry Demolition Company .....	Warwickshire
Warwick Reclamation .....	Warwickshire
Cawarden .....	Staffordshire
UK Architectural Antiques .....	Staffordshire
Watling Reclamation .....	Northamptonshire
Glens Reclaim .....	Derbyshire



Beeston Reclamation .....	Cheshire
Cheshire Demolition & Excavation .....	Cheshire
Reclaimed World .....	Cheshire
Reclaimed Flagstones .....	Manchester
Abacus Stone Sales .....	Yorkshire
Reclaimed Brick Company .....	Yorkshire
Wilson Reclamation Services .....	Cumbria
Teesside Architectural Salvage .....	Teesside
Tradstocks .....	Stirlingshire & West Lothian
Wilsons Yard .....	Co Down

BCA Matériaux Anciens . Loire, Normandy, France	
Pierre de Bourgogne .....	Tuscany, Italy
Antique Floors .....	Luxembourg

## HANDY HINTS

The best sandstone flags are 'street' flags. The best street flags come in even course heights, 18ins, 21ins, 24ins, and random lengths.

Setts are man-made cubic stones, cobbles are naturally water-worn stones.





# RECLAIMED ROOF TILES & SLATES

including chimneypots, ridge, ridge finials, tiles - delta, double romans, pantiles, peg tiles, plain tile, redland, triple romans, and slates - 20 by 10, 24 by 12 and more Ballachulish, Delabole, Valentia, Welsh, Westmoreland, Cotswold stone and Yorkshire greys

Stax Reclamation .....	Cornwall
Bath Reclamation .....	Somerset
South West Reclamation .....	Somerset
Ace Reclamation .....	Dorset
Dorset Reclamation .....	Dorset
Rose Green Tiles & Reclamation .....	Bristol
Original Architectural Antiques ....	Gloucestershire
Ronson Reclaim .....	Gloucestershire
Winchcombe Reclamation .....	Gloucestershire
LRBM .....	Buckinghamshire
TMO Reclaim .....	Buckinghamshire
J Brant Reclamation .....	Berkshire
Romsey Reclamation .....	Hampshire
Antique Buildings .....	Surrey
Comley Reclaim .....	Surrey
London Reclaimed Brick Merchants (LRBM) London	
Symonds Salvage .....	Kent
Architectural Salvage Source .....	Hertfordshire
Skyline Reclamation .....	Hertfordshire
V&V Reclamation .....	Hertfordshire
3A Roofing .....	Suffolk
AB Reclamation .....	Suffolk
Tower Reclaim .....	Suffolk
Treesave Reclamation .....	Suffolk
Mooney Demolition .....	Norfolk
Morways Reclaimers .....	Norfolk
Warehouse 701 .....	Herefordshire
Coventry Demolition Company .....	Warwickshire
Warwick Reclamation .....	Warwickshire
Cawarden .....	Staffordshire
Watling Reclamation .....	Northamptonshire

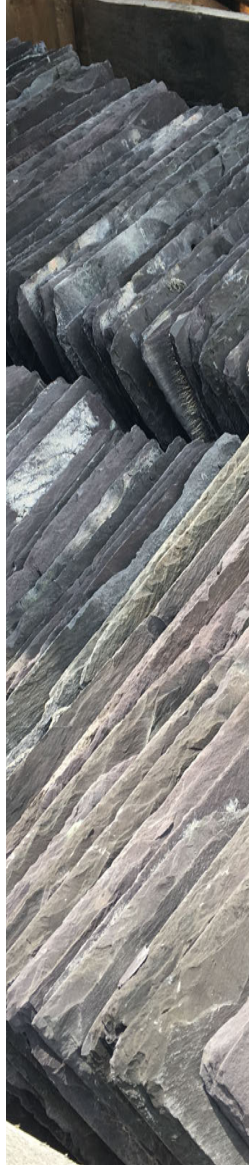
Glens Reclaim .....	Derbyshire
Beeston Reclamation .....	Cheshire
Cheshire Demolition & Excavation .....	Cheshire
Abacus Stone Sales .....	Yorkshire
Reclaimed Brick Company .....	Yorkshire
Wilsons Yard .....	Co Down

BCA Matériaux Anciens . Loire, Normandy, France

## HANDY HINTS

Tap reclaimed slates with a knuckle, if they ring they are sound, if a dull thud they might be faulty.

Use copper nails for best durability fixing slate and tiles.



Abacus Stone Sales are the leading specialist of new and reclaimed Yorkshire stone.

We have large stocks of reclaimed flagstones, cobbles, walling stone, heads and cills and Indian roof slates to name a few. All our stock can be viewed at our yard in Holmfirth, West Yorkshire.

Having large quantities of stock allows us to find the best products to suit the style, scope and budget of your development, as well as providing project-specific advice.



We can also help you to match our reclaimed Yorkshire stone to any original building. If your project is local to West Yorkshire, we will visit you on-site. If you are based nationally, you can send us photos so that we can match reclaimed stone in all areas of the UK.

Deliveries can be arranged by our own fleet of vehicles, from two bags on one of our small tippers, up to 12 bags on our flatbed with unloading facilities throughout the UK.

Call today +44 7711 997026 | +44 1484 972 688  
Or email [sales@abacusstonesales.co.uk](mailto:sales@abacusstonesales.co.uk)  
for prices of current stock



# RECLAIMED STONE WALLING

including ashlar, boasted, cills, coping, coursed,  
heads, lintols, pitch-faced, quoins, random,  
rangework, reticulated, rubble, tooled margins

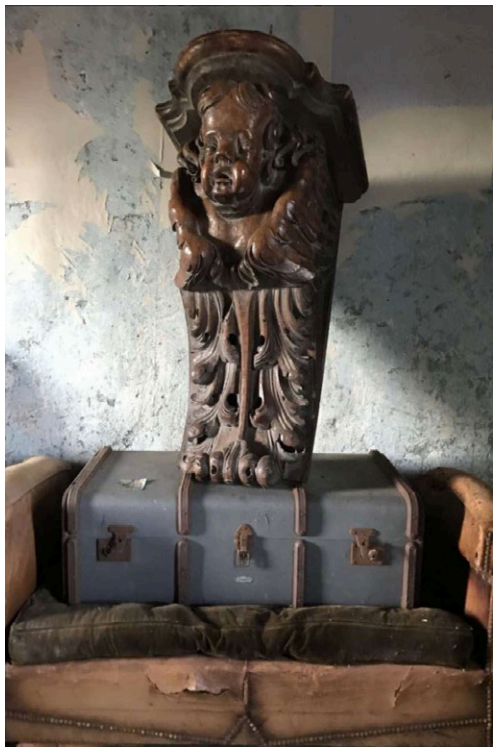
Bath Reclamation .....	Somerset
Ronson Reclaim .....	Gloucestershire
Winchcombe Reclamation .....	Gloucestershire
J Brant Reclamation .....	Berkshire
Romsey Reclamation .....	Hampshire
Antique Buildings .....	Surrey
Comley Reclaim .....	Surrey
Woodlands Farm Nursery Reclamation .....	Surrey
V&V Reclamation .....	Hertfordshire
Tower Reclaim .....	Suffolk
Treesave Reclamation .....	Suffolk
Morways Reclaimers .....	Norfolk
Warehouse 701 .....	Herefordshire
Cawarden .....	Staffordshire
Watling Reclamation .....	Northamptonshire
Beeston Reclamation .....	Cheshire
Cheshire Demolition & Excavation .....	Cheshire
Abacus Stone Sales .....	Yorkshire
Reclaimed Brick Company .....	Yorkshire
Tradstocks .....	Stirlingshire & West Lothian
Wilsons Yard .....	Co Down

BCA Matériaux Anciens .. Loire, Normandy, France  
Pierre de Bourgogne .....





Architectural



Woodwork

*Above: 17th Century Italian carved wood putto corbel from Simon Wharton Antiques*

# ARCHITECTURAL WOODWORK

including arches, columns, oak framed buildings etc

Stax Reclamation .....	Cornwall
South West Reclamation .....	Somerset
Ace Reclamation .....	Dorset
Dorset Reclamation .....	Dorset
Olliff's Architectural Antiques .....	Bristol
Rose Green Tiles & Reclamation .....	Bristol
Winchcombe Reclamation .....	Gloucestershire
Ronson Reclaim .....	Gloucestershire
Lassco Three Pigeons .....	Oxfordshire
J Brant Reclamation .....	Berkshire
Summers Place Auctions .....	Sussex
Antique Buildings .....	Surrey
Cast Iron Reclamation Company .....	Surrey
Comley Reclaim .....	Surrey
Symonds Salvage .....	Kent
Retrovius .....	London
Westland London .....	London
Antiques By Design .....	Essex
Ashwells Reclaimed Timber .....	Essex
Architectural Forum .....	Hertfordshire
Architectural Salvage Source .....	Hertfordshire
Heritage Reclamation .....	Hertfordshire
V&V Reclamation .....	Hertfordshire
AB Reclamation .....	Suffolk
Treesave Reclamation .....	Suffolk
Mongers Architectural Salvage .....	Norfolk
Morways Reclaimers .....	Norfolk
Real Original .....	Norfolk
English Salvage .....	Herefordshire
Warehouse 701 .....	Herefordshire
Coventry Demolition Company .....	Warwickshire
Warwick Reclamation .....	Warwickshire
UK Architectural Antiques .....	Staffordshire
Watling Reclamation .....	Northamptonshire
Beeston Reclamation .....	Cheshire
Cheshire Demolition & Excavation .....	Cheshire
Reclaimed World .....	Cheshire
Insitu Architectural Salvage .....	Manchester
Abacus Stone Sales .....	Yorkshire
Reclaimed Brick Company .....	Yorkshire
Wilson Reclamation Services .....	Cumbria
Teesside Architectural Salvage .....	Teesside
Wilsons Yard .....	Co Down

BCA Matériaux Anciens . Loire, Normandy, France





# ARCHITECTURAL STONE

including marble, composites such as concrete, glass fibre, fired clay, stoneware, terracotta items such as arches, architrave, cladding, columns, corbels, cornice, door surrounds, label mouldings, portico, skirting, steps, stone windows, string course, and window surrounds

Stax Reclamation .....	Cornwall
Simon Wharton Antiques .....	Somerset
South West Reclamation .....	Somerset
Ace Reclamation .....	Dorset
Dorset Reclamation .....	Dorset
Olliff's Architectural Antiques .....	Bristol
Rose Green Tiles & Reclamation .....	Bristol
Architectural Heritage .....	Gloucestershire
Winchcombe Reclamation .....	Gloucestershire
Ronson Reclaim .....	Gloucestershire
Lassco Three Pigeons .....	Oxfordshire
J Brant Reclamation .....	Berkshire
Summers Place Auctions .....	Sussex
Antique Buildings .....	Surrey
Retrouvius .....	London
Westland London .....	London
Architectural Forum .....	Hertfordshire
Architectural Salvage Source .....	Hertfordshire
V&V Reclamation .....	Hertfordshire
Tower Reclaim .....	Suffolk
Treesave Reclamation .....	Suffolk
Mooney Demolition .....	Norfolk
Mongers Architectural Salvage .....	Norfolk
Real Original .....	Norfolk
English Salvage .....	Herefordshire
Coventry Demolition Company .....	Warwickshire
Warwick Reclamation .....	Warwickshire
Cawarden .....	Staffordshire
UK Architectural Antiques .....	Staffordshire
Watling Reclamation .....	Northamptonshire
Cheshire Demolition & Excavation .....	Cheshire
Reclaimed World .....	Cheshire
Abacus Stone Sales .....	Yorkshire
Reclaimed Brick Company .....	Yorkshire
Teesside Architectural Salvage .....	Teesside
Tradstocks .....	Stirlingshire & West Lothian
Wilsons Yard .....	Co Down

BCA Matériaux Anciens . Loire, Normandy, France

# ARCHITECTURAL METAL

including rainwater gear, gates & railings

Stax Reclamation .....	Cornwall
South West Reclamation .....	Somerset
Ace Reclamation .....	Dorset
Dorset Reclamation .....	Dorset
Olliff's Architectural Antiques .....	Bristol
Rose Green Tiles & Reclamation .....	Bristol
Winchcombe Reclamation .....	Gloucestershire
Ronson Reclaim .....	Gloucestershire
Lassco Three Pigeons .....	Oxfordshire
J Brant Reclamation .....	Berkshire
Romsey Reclamation .....	Hampshire
Summers Place Auctions .....	Sussex
Comley Reclaim .....	Surrey
Symonds Salvage .....	Kent
Retrouvius .....	London
Westland London .....	London
Antiques By Design .....	Essex
Architectural Forum .....	Hertfordshire
Architectural Salvage Source .....	Hertfordshire
V&V Reclamation .....	Hertfordshire
AB Reclamation .....	Suffolk
Treesave Reclamation .....	Suffolk
Mongers Architectural Salvage .....	Norfolk
Mooney Demolition .....	Norfolk
Morways Reclaimers .....	Norfolk
Real Original .....	Norfolk
English Salvage .....	Herefordshire
Warehouse 701 .....	Herefordshire
Coventry Demolition Company .....	Warwickshire
Warwick Reclamation .....	Warwickshire
UK Architectural Antiques .....	Staffordshire
Watling Reclamation .....	Northamptonshire
Beeston Reclamation .....	Cheshire
Cheshire Demolition & Excavation .....	Cheshire
Reclaimed World .....	Cheshire
Insitu Architectural Salvage .....	Manchester
Abacus Stone Sales .....	Yorkshire
Reclaimed Brick Company .....	Yorkshire
Wilson Reclamation Services .....	Cumbria
Teesside Architectural Salvage .....	Teesside
Wilsons Yard .....	Co Down

BCA Matériaux Anciens . Loire, Normandy, France





# THEFT ALERTS

Salvo has long offered free Theft Alerts on SalvoWEB to facilitate recovery. Theft Alerts are circulated through our network and to some police forces and security agencies.

## Identification and recovery

Take clear photographs of garden ornaments and architectural features in unoccupied buildings. Note damage or marks, colour, materials, dimensions and inscriptions. Keep this information secure.

## If you see suspicious activity

Contact the police on 999 during or online after witnessing something which looks like a theft. If the activity is in a church or listed building or in a conservation area, alert the planning department.

## Raising a theft alert

After contacting the police make a note of the crime reference number and create a Salvo Theft Alert as quickly as possible.



# DECONSTRUCTION & DISMANTLING

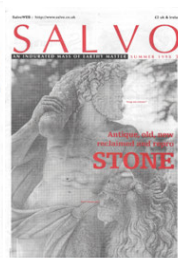
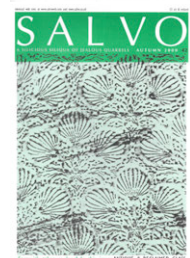
Architectural features, building materials and complete buildings can be circulated with a Dismantling Alert on SalvoWEB to connect with potential buyers and reusers well in advance of planned deconstruction and demolition.

Many reclamation businesses remove and dismantle at times or it is worth asking if they know someone who can. If you have a building which needs deconstructing try our listed demolition contractors in the Salvo Directory.



*Above: Dismantling Alert for a bar listed on SalvoWEB*







SCAN ME

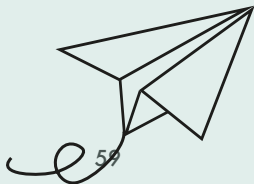
Subscribe

Salvo started as a printed directory and has grown as a trusted source for reclamation and design.

Here is a flavour of our stories which include architectural heritage, circular design, antiques and vintage events, reclaimed interiors and fashion, innovative reuse and buying guides.

Share your stories and put your projects in SalvoNEWS. Please get in touch to contribute.

# SalvoNEWS



# The power of good lighting

Beyond giving us a clearer perception, light is essential to our wellbeing. It affects our health, mood, & concentration with the power to transform our environment.

Words & Artwork by Becky Moles



*Murano pendant lights from Haes Antiques*

## A light history...

Before the invention of gas lighting, the hub of evening activities traditionally centred around a fireside, with candlelight and oil lamps providing portable light around the home. In wealthy households, interior light fittings utilised reflective surfaces to magnify the light and illuminate gilding.

Industrialisation led to significant advances, with Scottish engineer William Murdoch developing the application of gas lighting in the late 18th century. The new technology took time to be accepted into homes, but by the 19th century, gas lights gained popularity. However, gas lighting had shortcomings, such as smoke that blackened the walls and the occasional explosion - party with a bang, anyone?

The Englishwoman's Domestic Magazine recommended that parties be given by gas light and 'if it be daylight outside, you must close the shutters and draw the curtains.'

Home furnishings during this period were darkly luxurious and ornate, and the new lighting fixtures invited even more embellishment. Imitation designs in the Gothic and Rococo styles were a la mode.





Thomas Edison is often credited as the inventor of the incandescent lightbulb, though it developed through the work of many people over the decades. British chemist Joseph Swan began experimenting with materials in the 1850s to make a durable filament for the lightbulb. The two men ultimately partnered to establish the Edison & Swan United Electric Light Company, which became the largest manufacturer of lightbulbs.



Electric lighting became more prevalent in homes with the establishment of the National Grid in 1935, which standardised the nation's supply. Cleaner and more convenient, electricity quickly grew from only 6% of homes wired up in 1919 to two-thirds by the 1930s. The ease of electric light opened up a world of decorative designs, no longer hemmed in by the flame position of a gas light.

*Above: Mrs. Cornelius Vanderbilt dressed as a 'Electric Light', 1883  
Credit: José María Mora via Wikimedia Commons. Art Nouveau chandelier from Salvo Code member Westland London*

There are many periods and styles to pick from when buying antique and reclaimed lighting. Lean into what lights up your eyes and try not to be ruled by the tyranny of trends. Unlike their newer counterparts, older light fixtures were often handcrafted for longevity with high quality materials which hold their value.



Here are a few pointers to help cast the right light in your home...

### Create an illuminating plan

What are you looking for? Consider how you use your space. It is all about setting the right mood, and multiple light sources can help you change-up the atmosphere. Lighting can be split into three main categories; ambient is the primary light source, task lighting assists you in your work, and accent lighting focuses light on a particular area, such as a piece of art.

### It's not you, it's the lighting

Hailed for its minimalist look, downlighting is a dominant trend but not the most flattering. Be kind to yourself and your guests when creating your lightscape.

Try to mimic natural light by experimenting with bouncing light. It is no surprise that uplighting became popular in the Art Deco period - the dawn of the golden age of Hollywood - where they perfected the glamour of good lighting.

Standing lamps, ceiling lights and wall sconces in opaline glass directed light upwards to create diffused lighting.

*Right: Glass Wall  
Sconce salvaged from the  
MS Marco Polo ship by Salvo  
Code member Trinity Marine*



## Scale the heights

"Duck" is not the warmest of welcomes to your houseguests if you choose large lights for lower ceilings. I speak from personal experience - my grandmother had a brass chandelier that followed her from house to house despite the height of the rooms.



*Large Antique  
Crystal Chandelier  
from Salvo Code  
member  
Architectural  
Forum*

## Don't forget your Kelvins



*Above: Small opaline  
teardrop pendants  
from Salvo Code  
member Retrouvius*

Light is key to regulating our circadian rhythm, it triggers the production of serotonin which controls our mood and melatonin, which encourages sleep. Beyond the light positioning, you should consider the brightness and colour of your lightbulbs. The Kelvin (K) scale measures the colour temperature of light. The higher the number, the whiter the light. Warmer lightbulbs (2,000K - 3,000K) help us feel calmer and more relaxed, whereas higher rated bulbs (3,100K-4,500K) aid concentration.

## Safety first

It is essential to buy from trusted and reputable sources, which is why I recommend seeking a Salvo Code dealer. Antique and vintage light fittings require rewiring to adapt to modern regulations. With lamps, this usually means replacing the bulb holder and flex and adding an earth wire.

Always read the item's description to ensure the working condition of the light. Restored lighting should have a dated PAT test label no more than three years old. On SalvoWEB, we require sellers to state whether electric lighting meets current safety requirements. If you fall in love with a light 'sold as seen,' you can have it rewired by a qualified restorer who can also provide a PAT test.



## Remember

Never throw a lightbulb into your household waste or recycling bin, as they may contain potentially dangerous substances such as mercury. Instead, find your nearest recycling point so that precious materials can be repurposed into new machinery like wind turbines or electric cars.



*Above: Restored industrial lights from Salvo Code member Wilsons Yard  
Left: Glass pendant from Salvo Code member Insitu  
Below: Anglepoise Lamp from Salvo Code member V&V Reclamation*





## Conversations with home

Sara Morel, CEO of Salvo & founder of Reclaimed Woman shares why she swapped fashion for salvage

hooked. Yes, the tassels on my boot had physically hooked me to pieces of salvage. But seriously, from then on, I was committed to working with reclaimed materials.



Eight years ago, I had never stepped foot inside a reclamation yard, but my fashion job enabled me to buy my first home in London, which I vowed to renovate with as much reuse as possible.

One foot in fashion, one foot in reclamation, often up to my knees in architectural salvage, but refusing to part with my knee-high tassel boots, while dancing in the mud with reclaimed radiators from the roaring 20s. I was

**"This planet is our only home, so connecting the environmental impact of the decisions I made for my own home helped me make a total life change"**



I love fashion, but while exposed to the storied pieces I was designing my home with, I became disillusioned with my job. It felt like being on the production line - along with fast fashion and fast furniture that's made to tick-off trends rather than resonate and add value

to our lives or the lives of the people that made them.

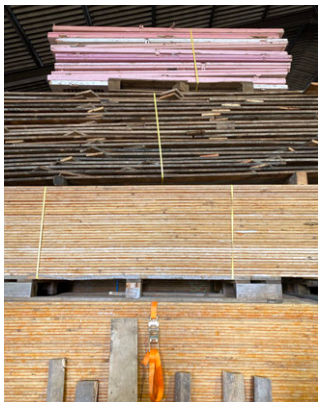
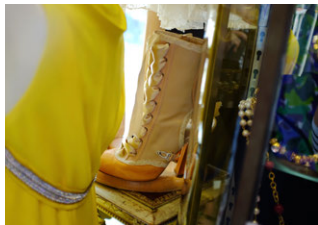
Renovating my home with reclaimed, eco-friendly materials gave me daily inspiration to make bigger changes, so I left my job to reclaim my life.



*Reclaimed renovation photos with organ pipe repurposed as an extractor from Salvo Code member Architectural Forum, me wearing eco fashion by Gung Ho*

I founded Reclaimed Woman to share the journey of my renovation and started consulting on reuse in design. It is easy to forget that five years ago - when I created Reclaimed Woman - it was much harder to find sustainable choices, whether looking for more eco ways to dress ourselves or our homes. So I also began researching brands

**SalvoNEWS**



*Above: Paris Flea Market,  
my first reclaimed kitchen,  
Salvo Code member  
Architectural Salvage Source*

and interviewing people who integrate circular principles into their work to learn from those who are genuinely doing it differently. On the surface, it seems like everything has advanced hugely, and the word sustainable is part of our mainstream language. But in fashion terms, it can be hard to separate the green from the washing, so I still seek out and share ideas and places to help you (and me) source more consciously, often by reusing what's already out there.



SCAN ME

Take a tour of my first carbon negative London flat renovation in this video we premiered for *Salvo Fest of Imperfect Beauty*, [salvofair.com](http://salvofair.com)





*Above: Reclaimed marble for our kitchen sourced on SalvoWEB*

## W Reclaimed Woman Column

Check out the Reclaimed Woman Column for insights into my current home renovation. One lesson I am carrying with me is that you have to roll with the rhythm of reclaimed pieces, which will generally take longer to source and install. You may find your bedroom stacked with a sink, copper hood, and mirror destined for the kitchen (like mine is right now) while you sort out the remaining components. But I find the extra time I spend sourcing allows me to get a better feel for the space, and the installation challenges ultimately lead to more unique results. Case in point - a 200kg slab of English

alabaster with an Art Deco heart inlay rescued from a convent in Sussex, which became the centrepiece 'vinyl shrine' of our 2-bed flat. Yes, our new home is larger than my last shoebox-sized place, which I ironically renovated to incorporate more storage for my shoes...However, this is still small space living. I have never let that put me off using unexpectedly large architectural salvage to transform a space.



*Above: Antique glass light shades. Right: 'Vinyl shrine' with reclaimed alabaster panel sourced from Salvo Code member Retrouvius & Victorian newel posts sourced on SalvoWEB*

## Are you embarking on a renovation project?

My column is also here to solve your design dilemmas.

Message me about reusing and working with antique and reclaimed materials, or send your questions to Salvo.

There is nothing like the narrative that comes from a home created with reclaimed pieces that people have rescued, reused or repurposed. The journey will become part of the story of your home, along with all of the storied things you have brought together, so enjoy it. [reclaimedwoman.com](http://reclaimedwoman.com)

📷 @reclaimedwoman





# Ironwork from the greatest forgotten wall in London

Excerpt from a SalvoNEWS story by Anthony Reeve of LASSCO Three Pigeons

Right: The Somers Town Goods Yard. Credit: The Midland Railway Study Centre, Derby [midlandrailwaystudycentre.org.uk](http://midlandrailwaystudycentre.org.uk)

Sir George Gilbert Scott's dramatic Midland Grand Hotel, now the St. Pancras Renaissance Hotel, was a vast Gothic architectural masterpiece that dominated the skyline of Victorian London along The Euston Road. Built by The Midland Railway and completed by 1873, the terminus complex, comprising of Scott's 400 room hotel and a colossal train shed, spanned the St. Pancras platforms in a single arc. However, London's insatiable need for goods, especially coal and fresh produce such as fruit, vegetables and milk, meant that the goods yard built in Camden could no longer cope with the sheer volume of freight coming in. A bold scheme to build a larger goods yard was put forward, which would mean clearing 'Agar Town', an area of crowded slum houses to the west of St. Pancras.

Charles Dickens described Agar Town as: "A complete bog of mud and filth with deep cart-ruts, wretched hovels, the doors blocked up with mud, heaps of ashes, oyster shells and decayed vegetables."

The poor residents, survivors of a cholera outbreak a few years previously, were given their marching orders by 1883 and Joseph Firkbank, a prolific railway builder, was given the contract for construction to commence.

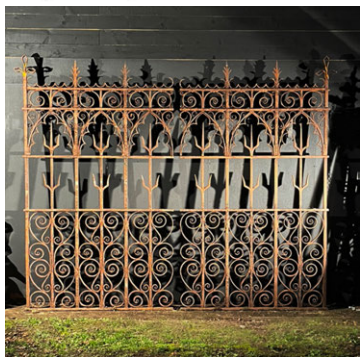




The technically brilliant design aesthetically complimented Sir George Gilbert Scott's passenger terminus next door. A vast decorative screen wall would contain and secure the goods depot, which was three-quarters of a mile in length, 30 feet high and nearly 3 feet thick. It required around 8,000,000 bricks and was faced with Leicestershire reds, with the inner portion made entirely of Staffordshire blue bricks.

The screen ironwork is described in *The Life & Work of Joseph Firkbank J.P. D.L. – Railway*

*Contractor* by Frederick McDermott 1887: "The elevation on the Euston Road is tastefully ornamented with Mansfield stone, whilst the large arched openings, left in the wall to assist in lighting the roadway which runs around the enclosure, are protected by hammered iron screens, 11 feet by 8 feet, and weighing about 12 cwt. Each, of beautiful workmanship."



*Above: Line drawing of the intended panels for the Curtain Wall in Firkbank biography 1887 & a salvaged section of this screen ironwork, found by LASSCO in an artist's studio in Kent. Now sold, however another pair which has already been converted into gates is currently for sale at LASSCO Three Pigeons*



As Ian Mansfield describes on his London History blog: “The decline in rail travel made stations particularly vulnerable to modernising drives. Despite public outcry, Euston’s elegant Doric buildings fell by 1962, and by 1966 it was clear that St. Pancras was next... Yet this time British Rail found itself facing an influential alliance of critics... By 1967 the complex had Grade I protection... St. Pancras was saved.”

“St. Pancras may well deserve to be lauded as a Victorian cathedral of steam, but Somers Town was its essential counterpart: a temple to consumerism on a massive scale. The goods yard however could not muster a line up of poets...(i.e Betjeman)... and architectural historians to shield it from the wrecker’s ball. So while St. Pancras was spared, its unsung adjunct was levelled.”  
The British Library was built on the site in 1997.

*Below: Gates from Somers Town Goods Yard repurposed at St. Pancras. Photo A. Reeve*



The Goods Yard had been a vital hub for the distribution of goods, mainlining straight from the east Midlands into the heart of London. Today's efforts to alleviate pollution including Congestion Charges and Emission Zone restrictions reveal the brilliance of the Victorian logistics solution. It had brought vast quantities of goods into central London on rails not road for over a century and it had been tragically scrapped together with a vast and very handsome building that has since been demolished and almost completely forgotten.

📷 @lassco3pigeons

# In every job that must be done, there is an element of fun

Marypup founder speaks to Sara Morel  
about upcycling

"I didn't really decide myself. People saw me in the street picking up umbrellas and said it was like Mary Poppins. I had the idea of Marypup because it's funny," says designer and eco-activist Melanie Ludica, as she recalls how the name of her upcycled rainwear brand came about.



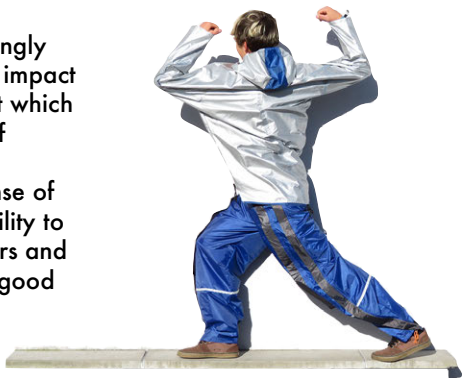
Two and a half years in, Melanie still rescues broken umbrellas discarded in the street, but she also has a network of help with collection boxes in fair fashion stores for people to drop off their broken brollies. This of course helps her to source more fabric to reuse, but the overriding aim is for people to participate in the upcycling activity. "I do this to show that we have to screw down our overconsumption and that we have to change...This is the message of Marypup," she says. And I think Melanie hits the nail we need on the head: "A serious message can come through better when it's funny."





SalvoNEWS

We are all increasingly aware of fashion's impact on the environment which breeds a medley of consumer guilt and helplessness. A sense of humour has the ability to break down barriers and unite us in the feel-good effect of taking part in solutions.

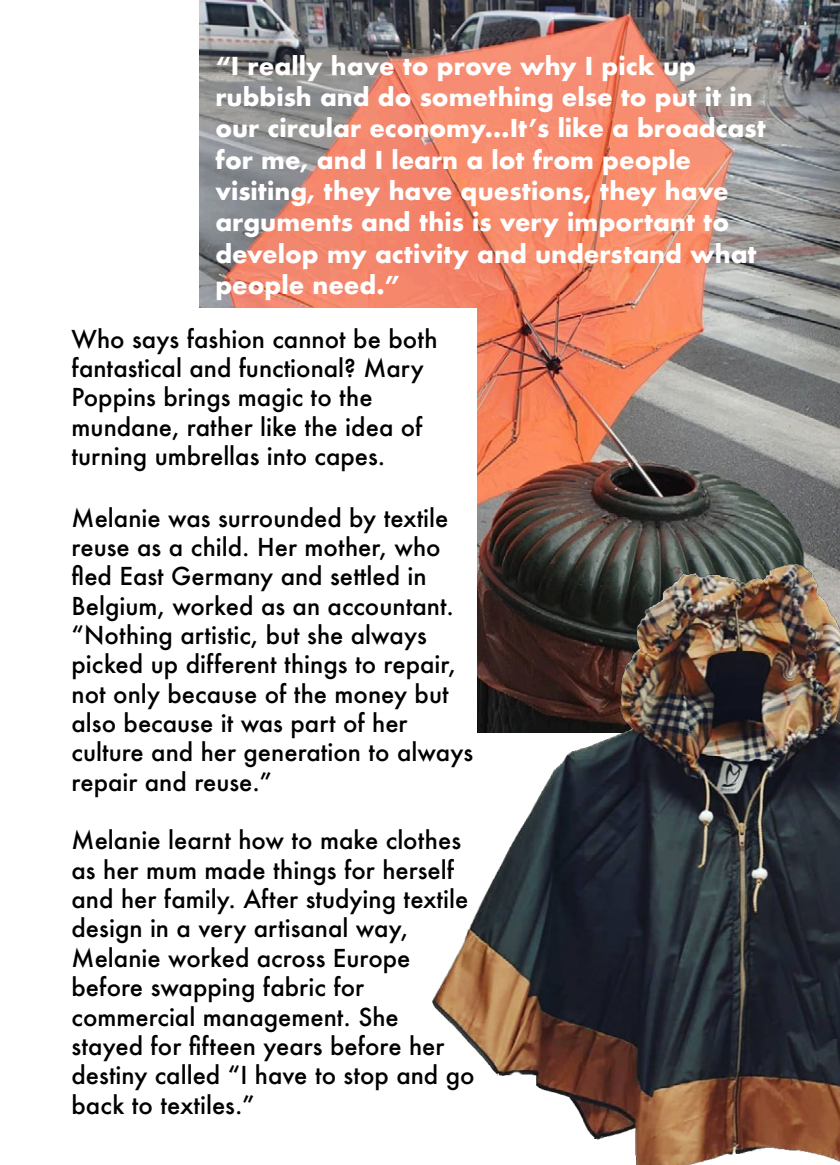


*Marypup rainwear is available at [marypup.eu](http://marypup.eu) & in a handful of shops in Belgium & Germany*

I discovered the brand at a fashion show at Recyclerie Sociale, a social enterprise in Brussels that collects, sorts and repairs unwanted furnishings and decorative objects.

I am lucky to have witnessed fashion weeks in Milan, London and New York, but nothing felt as cutting-edge as staging a runway between the pre-loved furniture. Walking the catwalk herself, Melanie was joined by other contributors and friends of other creators that recrafted their collections for the show.

This might have been her fashion show debut, but Melanie regularly puts herself around people at markets and exhibitions. In fact, she has gained a lot of knowledge and adapted her designs from these discussions. "At the very beginning, I did quite short capes because the main umbrellas you find in the garbage are small," but people asked for longer capes, whether they were taller or wanted more protection from the rain because they were cycling.

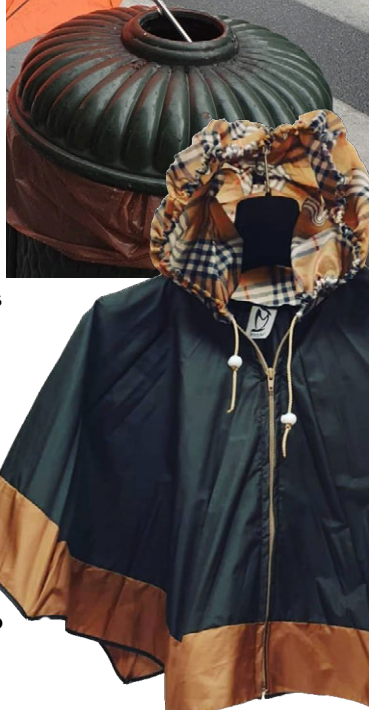


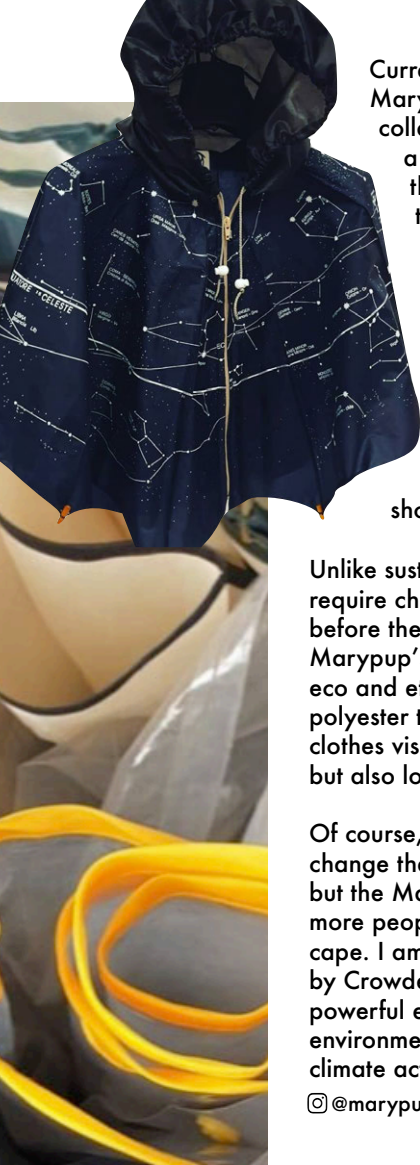
**"I really have to prove why I pick up rubbish and do something else to put it in our circular economy...It's like a broadcast for me, and I learn a lot from people visiting, they have questions, they have arguments and this is very important to develop my activity and understand what people need."**

Who says fashion cannot be both fantastical and functional? Mary Poppins brings magic to the mundane, rather like the idea of turning umbrellas into capes.

Melanie was surrounded by textile reuse as a child. Her mother, who fled East Germany and settled in Belgium, worked as an accountant. "Nothing artistic, but she always picked up different things to repair, not only because of the money but also because it was part of her culture and her generation to always repair and reuse."

Melanie learnt how to make clothes as her mum made things for herself and her family. After studying textile design in a very artisanal way, Melanie worked across Europe before swapping fabric for commercial management. She stayed for fifteen years before her destiny called "I have to stop and go back to textiles."





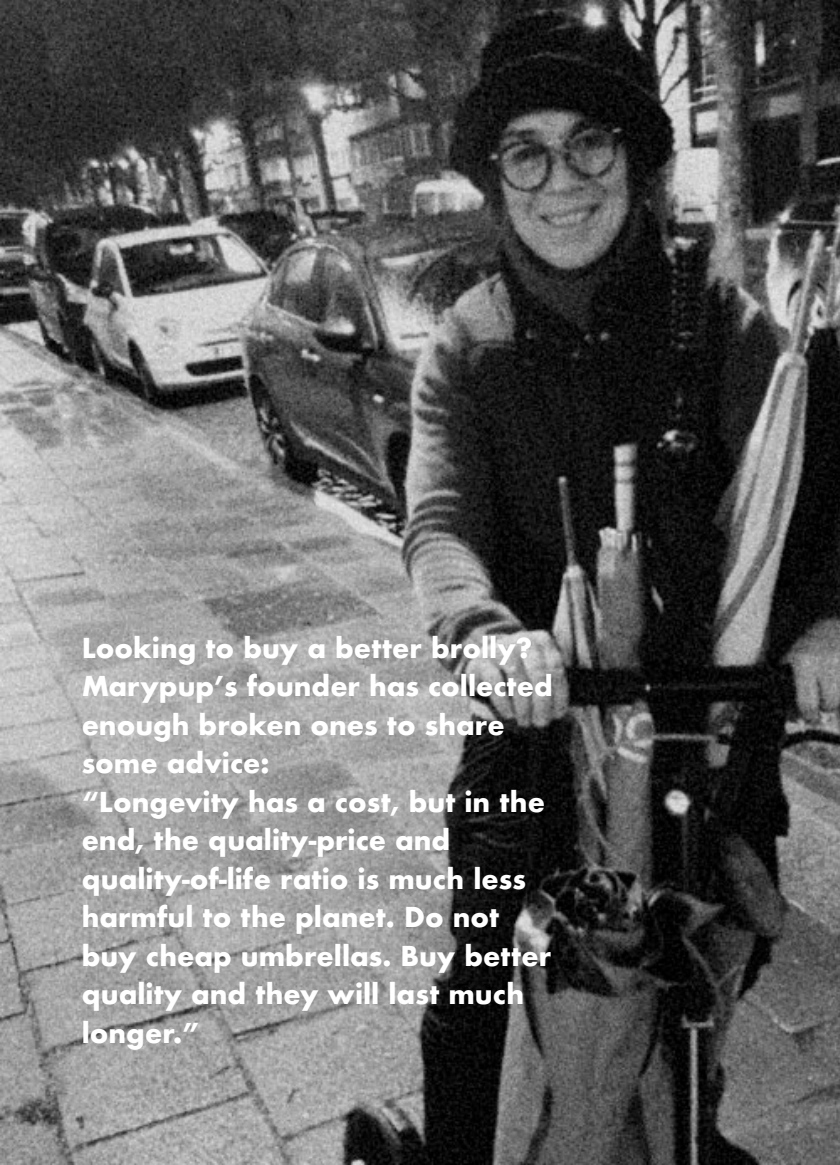
Currently a one-woman business, Marypup is also a social project, collaborating with workshops within a Belgian prison for an initiative that provides employment and training to detainees. From dismantling the umbrellas to cutting the fabric and sewing the compositions she designs, it has worked well for over two years. "They learn a lot from me, and I learn a lot from them. It shows that you can do a lot with our industrial rubbish and I would like to show people what is possible."

Unlike sustainable textile solutions that require chemically intensive processing before they can be refashioned, Marypup's upcycled rainwear adopts an eco and ethical approach by recrafting polyester that is already out there. These clothes visibly communicate their past, but also look futuristic.

Of course, one brand alone cannot change the forecast of climate change, but the Marypup message will touch more people than those that purchase a cape. I am left singing *Weather with You* by Crowded House. A song about the powerful effect we all have on our environment could just be the anthem for climate action.

📷 @marypupcycling





**Looking to buy a better broolly?  
Marypup's founder has collected  
enough broken ones to share  
some advice:**

**"Longevity has a cost, but in the  
end, the quality-price and  
quality-of-life ratio is much less  
harmful to the planet. Do not  
buy cheap umbrellas. Buy better  
quality and they will last much  
longer."**

# Reuse Radar

Something new from something old

Edited by Becky Moles

Whether still carrying traces of their previous life or unrecognisable in their new form, recrafting can transform the unloved or unusable with a stamp of individuality that cannot be replicated. Here are a few projects and pieces to give you a fresh perspective on upcycling.



Recrafted Wheel lamp  
Antiques by Design



Before: Salvaged balustrade

Salvo Code member  
Antiques by Design  
creates distinctive interior  
pieces with a combination  
of reclaimed items &  
salvaged materials

After: Recrafted  
into tactile bar at  
Martello Hall in  
Hackney



Photos: Antiques by Design



Chandelier in progress at Agapanthus interiors

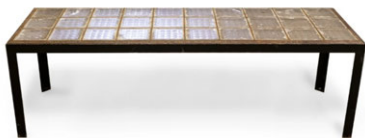
The Chandelier of Lost Earrings  
Agapanthus Interiors collaborated with artist Lauren Sagar for a Martin Hulbert Design Project, dressing an antique brass waterfall chandelier with thousands of earrings, brooches & crystal droppers to mesmerising effect

Photo: Steve Russell Studios



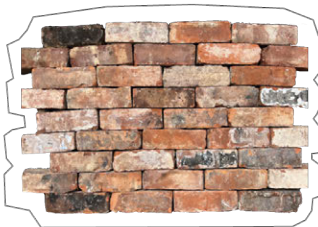
Repurposed washing machine drum light from Salvo Code member English Salvage

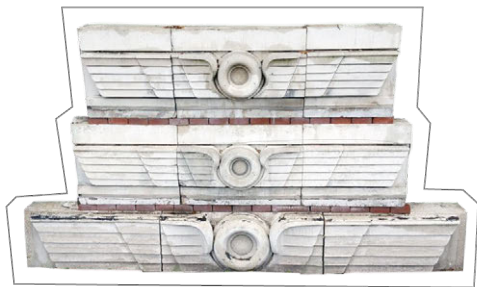
Upcycled pavement table from Salvo Code member Architectural Forum



Discover more one-of-a-kind recraft pieces on [SalvoWEB](#)

# What's on SalvoWEB?





## **Salvo reclamation manifesto**

For over thirty years, Salvo has encouraged the reclamation and reuse of building material at the end of its current life for the following reasons:

### **To reduce carbon emissions**

Carbon dioxide emitted from the burning of coal, oil and gas remains in the air until it is eventually absorbed. Reusing today's salvage, instead of making new fossil-fuel derived material and products, increases the capacity of the planet to absorb carbon dioxide.

### **To avoid pollution**

Reuse prevents any embodied toxins from leaching into the soil, water and air where they may be absorbed by plants, animals and humans. These toxins may be converted into less harmful products by the natural world or they may be continuously recycled and gradually accumulate.

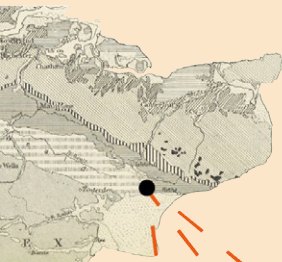
### **To save resources**

Materials used to make old products are generally becoming scarcer and may only be available reclaimed, for example, timbers logged from slow-grown first growth natural forests.

### **To foster good practice**

The Salvo Code is for good practice in stock purchasing. Salvo also believes that a hierarchy of reuse promotes embedding reclaimed products within the structure of buildings to provide long-term reuse compared to shorter-term decorative reuse.





With so many companies making sustainability claims, it can be hard to navigate the market to know which materials deserve our trust, and that's where Truly Reclaimed comes in.

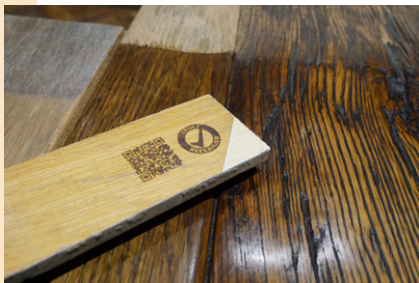
# Yours Truly Reclaimed



# Real Reuse

The Truly Reclaimed certification builds on our longstanding Salvo Code, a leading assurance in architectural salvage and reclamation with member businesses that already meet high standards in responsible sourcing. The Salvo Code applies to a business, whereas the Truly Reclaimed label applies to an item for deeper traceability.

Truly Reclaimed certification ensures that a product is genuinely antique or reclaimed rather than just resembling the old and highlights the benefit of choosing products that are genuinely reclaimed for reuse.



Truly Reclaimed items range from large architectural antiques to salvaged fireplaces, flooring and lighting. For the certification, the term reclaimed means antique, salvaged, or secondhand.

In essence, the products will have had a past life and reuse will allow them to have a future life.

Here's how the label could work for yours truly....

### **Private renovators & DIYers**

The emergence of the “the reclaimed look” as a design trend has driven faked alternatives. Beyond misleading people with pretend eco-friendliness, the issue is the environmental cost, not simply of the new, but the additional cost of making the new look reclaimed.

By buying from a growing list of Truly Reclaimed suppliers, you can be sure that you are reusing products with a past.

See your positive environmental impact climb



Truly Reclaimed wood floors fitted into one room of an average house saves the carbon emissions of more than 50 nights in a low carbon hotel\*\*

## See the stories behind real reuse

Through Truly Reclaimed QR tags you can discover the material's past life, reclamation rescue stories and the embodied carbon that is saved through reuse

General info about reclamation & reuse

GENERAL  
INFO



General stories about the material



General benefits on reuse of reclaimed material



specific benefits on the reuse of the reclaimed product or material



Its environmental impact:  
we measure the carbon  
dioxide saved by reusing  
the material



stories about the  
provenance

economic  
aspects of the  
material or  
product

people & animals  
connected to  
the material or  
product

craft skills &  
manufacture of  
the product

materials  
used to make  
the product

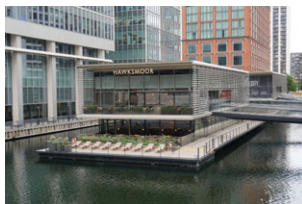


specific stories about the reclaimed material

Look out for Truly Reclaimed labels in shops, hospitality spaces and destinations that have joined the growing movement of environmentally driven design.



Photos: Hawksmoor Wood Wharf, London



Truly Reclaimed wood reused at Hawksmoor Wood Wharf alone saved carbon emissions equivalent to the making of 25,000 standard plastic carrier bags. The mahogany, supplied by Architectural Forum, was previously a gymnasium floor\*

\*The reuse of 5.1m<sup>2</sup> Truly Reclaimed mahogany woodstrip = a saving of 250kgCO<sub>2</sub>e = 25,000 standard disposable plastic carrier bags\*\*

\*\*The figures can be compared to examples extracted from Professor Mike Berners-Lee book *How Bad Are Bananas – The Carbon Footprint of Everything*

## Reclamation & Antiques Dealers

Truly Reclaimed is designed to support business and be easy for you to carry out.

Once verified, your unique QR code is created with a link to a Truly Reclaimed web page that showcases your business and Salvo can calculate the carbon benefit of the products you rescue for reuse.

Your commercial clients may use the label to show that they support the reuse of Truly Reclaimed materials in shops, hospitality spaces and outdoor areas. Your client gains more customer engagement. You make more sales. And the planet wins because it can absorb more CO<sub>2</sub> and reduce climate change.



**310,000t CO<sub>2</sub>e saved  
by north-west Europe  
salvage trade**



## Designers & Developers

Distinguish your spaces and shout about your decision to design with authentic Truly Reclaimed materials.



People's purchasing habits and the places we choose to live, work and spend time in are increasingly driven by environmental concerns. Wellbeing is top of mind, not only for ourselves but for the planet.

*Photo courtesy of SETTLE Norfolk, materials supplied by Salvo Code member Morways Reclaimers*

Share the positive environmental impact of choosing Truly Reclaimed products. Salvo can tailor branding and signage to suit your project.

**Watch the video to learn more**



SCAN ME



## Q&A with Thornton Kay

Salvo founder  
talks Truly  
Reclaimed



### **How did you come up with the idea of a Truly**

**Reclaimed label?** Replicas have been sold as genuine for hundreds of years, but the past two decades has seen a rapid rise in fake reclaimed building material which is increasingly supplied and manufactured by major companies, much of it in faraway places, using illegally obtained materials, and made

under uncertain working conditions. This has led to a significant reduction in the reclamation and sales of, for example, reusable demolition timber, and an increase in carbon emissions. I felt it would be a good idea for Salvo to start a labelling scheme.

### **Do certifications guide your buying choices and why is that important?**

The answer is yes, for example buying organic food, although I also

buy from small ethical businesses which are not part of a certification scheme - such as my local spray-free vegetable growers.

**Why will Truly Reclaimed benefit businesses and people?** Using the Truly Reclaimed map will allow people to choose reclamation friendly hotels, restaurants and shops and the QR tags linked to installed products will allow them to also find suppliers and installers, as well as providing info and ideas to inspire more reuse.

**How do you see the Truly Reclaimed label evolving?** Expanding laterally to be taken up by more countries in more languages, and vertically to embrace exacting requirements of specifiers.



*Above: Thornton's early events & campaigning  
- green technology, eco living & reuse*

**Learn more at [trulyreclaimed.org](http://trulyreclaimed.org)**

# Can you imagine a future where use starts with reuse?

Currently, only 1% of building materials are reused following their first application. Driven by an ambition to change this, Salvo joined an international partnership for the Interreg NWE project entitled FCRBE in 2019, which aims to increase the amount of reuse of reclaimed building material by 50% by 2032.

FCRBE, which stands for Facilitating the Circulation of Reclaimed Building Elements, does not exactly roll off the tongue, so we like to hum F-C-R-B-E to the tune of Aretha Franklin's classic, Respect.

Respect is particularly fitting given that we are all responsible to show a little more regard for the environmental impact and net loss of economic value if we fail to reuse. Salvo's new platform futuREuse was born to accelerate our founding mission and the path to more reuse in larger-scale construction. The project delivered reclamation directories, pilot projects, specification methods, publications to engage readers around the subject of reclamation and reuse, the launch of the Truly Reclaimed label and much more...



[futureuse.co.uk](http://futureuse.co.uk)

Can you imagine a future  
where use starts with reuse?

# futuREuse

DIRECTORY

## UK & IRELAND 500

Bookmark the futuREuse directory, a  
new focused edit of the world-renowned  
Salvo directory

[salvoweb.com/salvo-directory/fcrbe](http://salvoweb.com/salvo-directory/fcrbe)







## 7 Short introductions to the world of reuse

The futuREuse series serves as a taste of the FCRBE EU project. The seven booklets span the broad spectrum of reuse with useful information to guide and inspire working with reclaimed materials. They highlight environmental benefits, clarify grey areas and frequently asked questions regarding best practices, whilst sparking curiosity.

### Teaser

## Fashion for Reclamation

Beyond the trend for visibly reclaimed interiors, the underlying movement of environmental consciousness has the power to instil reuse as an ethos that does not go out of fashion.

Many materials are being reclaimed throughout the world, but much more could be done. At present 1% of construction products are sourced from reclaimed materials, and the fashion industry itself works on a similarly tiny proportion of reuse, so there is a strong opportunity to construct change in both fashion and its built environments.



Delve into the motivations of pioneering salvage dealers making markets for reclaimed materials in the 1970s as we trace the origins of the “reclaimed look.” Fashion for Reclamation explores the concept of slow retail and how the use of authentic reclaimed materials connects with customers.

Discover the series  
on [futuREuse](http://futuREuse)



***Above left: Bella Freud designed with Retfouxvius, photo: Tom Fallon  
Right: Gabriela Hearst London designed with Foster + Partners, photo: Cunningham Captures***

[futureuse.co.uk](http://futureuse.co.uk)

**SALVO**  
presents

futuREuse

The new platform that  
champions a reuse  
economy where use  
starts with reuse



**Are you a designer, architect or construction professional?**

In the climate crisis, futuREuse provides you with the essential intelligence and advice you need to navigate the path ahead to increase reuse and support your part in reducing the carbon footprint of our built environments.

futuREuse membership offers you the opportunity to network with a community of reuse innovators, learn from pilot projects and forge more connections across the industry and the professional reclamation sector.

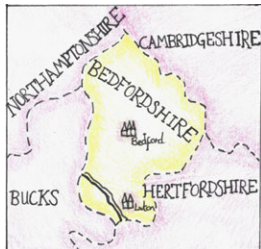
Here you will find a growing library of resources and tools to share knowledge around reuse and integrating reclaimed materials to help you reduce the embodied carbon of your projects.

**Join the community at [futureuse.co.uk](https://futureuse.co.uk)**



## Salvo Code Directory

A celebration of the vast and diverse architectural salvage scene, the following pages are perhaps the most important in this little green book. Take the secret out of hidden reclaimed treasure with the suppliers you need to know listed by region.



## **BEDFORDSHIRE**

### **SKYLINE RECLAMATION**

Reclaimed roofing slates and roof tiles carefully inspected and crated.

1-3 Edison Road, Elms Farm Industrial Estate Bedford, Bedfordshire MK41 0HU

Tel +44 (0)1234 271 367

Cherrycourt Way, Stanbridge Road,

Leighton Buzzard Bedfordshire LU7 4UH

Tel +44 (0)152 537 4723

[skylineroofing.co.uk](http://skylineroofing.co.uk)

## **BERKSHIRE**

### **J BRANT RECLAMATION**

Reclaimed building & landscaping materials, architectural salvage, antique & reproduction garden statuary.

Lakeside Farm, Brimpton Common, Tadley, Berkshire RG7 4RT

Tel +44 (0)118 981 3882

[jbrant.co.uk](http://jbrant.co.uk)

### **NATURAL STONE CONSULTING**

Antiqued and reclaimed natural stone floors, reclaimed terracotta tiles, granite, setts, York cobbles.

Viewing by appointment only: Unit 7 Ampere Road, Newbury, Berkshire RG14 2DQ

Tel +44 (0)333 444 8899

[naturalstoneconsulting.co.uk](http://naturalstoneconsulting.co.uk)

## **BRISTOL**

### **OLLIFF'S ARCHITECTURAL ANTIQUES**

Antique architectural elements, bathrooms, door furniture, pub fittings, garden ornament and flooring.

Viewing by appointment only: Bristol

Tel +44 (0)7850 235793

[olliffs.com](http://olliffs.com)

### **ROSE GREEN TILES & RECLAMATION**

Reclaimed roof tiles and slates, cast iron radiators, sleepers, floor tiles and flagstones, fireplaces, garden ornament.

206 Rose Green Road, Fishponds, Bristol BS5 7UP

Tel +44 (0)117 952 0109

[salvage-and-reclamation-yards.co.uk](http://salvage-and-reclamation-yards.co.uk)



### **SOURCE ANTIQUES**

1950s English Rose and Paul Metalcraft kitchens, industrial and vintage lighting and furniture.

5 Flowers Hill Close, Brislington,  
Bristol BS4 5LF

Tel +44 (0)117 300 3690

[source-antiques.co.uk](http://source-antiques.co.uk)



*Source Antiques*

## **BUCKINGHAMSHIRE**

### **LONDON RECLAIMED BRICK MERCHANTS**

Reclaimed bricks and natural stone with stocks acquired through their own careful demolition services. Brick matching available.

Hyde End Brickworks, Chesham Road, Great Missenden HP16 0RD

Tel +44 (0)7958 193566

[lrbm.com](http://lrbm.com)

### **SITE 77**

Longstanding reclamation business now specialising purely on sourcing for private clients & architects. Reclaimed and new, matching building materials by request.

20a Station Road, Winslow, Buckinghamshire MK18 3ES

Tel +44 (0)7768 155771

[site77.co.uk](http://site77.co.uk)

### **SKYLINE RECLAMATION**

Reclaimed roofing slates and roof tiles carefully inspected and crated.

Unit 4, M40 Industrial Estate, Blenheim Road, Cressex Business  
Park High, Buckinghamshire HP12 3RS

Tel +44 (0)1494 932 500

[skylineroofing.co.uk](http://skylineroofing.co.uk)

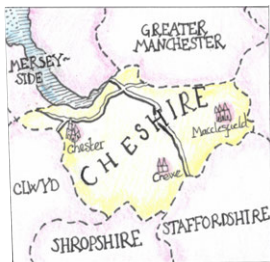
### **TMO RECLAIM**

Reclaimed building & landscaping materials, including Yorkstone flags, bricks, timber, roofing slate, tiles & ridges.

Unit 4, Station Road Industrial Estate, Winslow,  
Buckinghamshire MK18 3RQ

Tel +44 (0)1296 711772

[tmoreclaim.co.uk](http://tmoreclaim.co.uk)



## CHESHIRE

### BEESTON RECLAMATION

Reclaimed building and landscaping materials, architectural salvage and antiques

Whitchurch Road, Beeston, Tarporley, Cheshire CW6 9NJ

Tel +44 (0)1829 260299

[beestonreclamation.co.uk](http://beestonreclamation.co.uk)

### CHESHIRE DEMOLITION & EXCAVATION

Demolition services with stocks of reclaimed stone, bricks, slates, tiles, beams, doors, sleepers, gates and railings.

72 Moss Lane, Macclesfield, Cheshire SK11 7TT

Tel +44 (0)1625 424 433

[cheshiredemolition.co.uk](http://cheshiredemolition.co.uk)

### NOSTALGIA

Antique fireplaces from Tudor to Georgian, Victorian and Edwardian eras (1550-1920). Decorative antiques and lighting.

Bridge House, Ashton Road, Stockport, Cheshire SK6 2QN

Tel +44 (0)161 477 7706

[nostalgia-uk.com](http://nostalgia-uk.com)

### RECLAIMED WORLD

Reclamation emporium and showrooms with curated room sets for furniture, mirrors, lighting, fireplaces & decorative items.

Tarporley Road, Little Budworth, Tarporley, Cheshire CW6 9ES

Tel +44 (0)1829 760288

[reclaimedworld.com](http://reclaimedworld.com)

## CORNWALL

### STAX RECLAMATION

Reclaimed materials & architectural salvage. Find Victorian chairs to Mid-Century Modern units in their furniture showroom.

Avery way, Tamar view Industrial Estate, Saltash, Cornwall PL12 6LD

Tel +44 (0)1752 849111

[staxreclamation.com](http://staxreclamation.com)



## CUMBRIA

### WILSON RECLAMATION SERVICES

Yew Tree Barn is home to Wilson Reclamation Services for Architectural antiques & reclamation alongside artisan studios & Harry's CafeBar.

Yew Tree Barn, Low Newton, Grange-over-Sands, Cumbria LA11 6JP

Tel +44 (0)1539 531498

[yewtreebarn.co.uk](http://yewtreebarn.co.uk)

## DERBYSHIRE

### GLENS RECLAIM

Reclaimed roof tiles, ridges & chimney pots, pavers, bricks, garden ornament & bygones.

Viewing by appointment only: Unit 6 Parcel Terrace, Derby DE1 1LY

Tel +44 (0)1332 386037

[glensreclaim.com](http://glensreclaim.com)

## DEVON



### THE ORIGINAL BATH COMPANY

Antique bathroom fittings including baths, basins, lavatories, taps and cisterns. Full restoration service to your specification.

Thrushall Farmhouse, Allerford,  
Devon EX20 4PU

Tel +44 (0)7966 416745

[originalbaths.com](http://originalbaths.com)

### TRINITY MARINE

Reclaimed marine antiques, collectables, nautical décor & lighting.  
Scatter Rock, Sheldon Lane, Dunsford, Nr Exeter EX6 7YT

Tel +44 (0)1647 253400

[trinitymarine.co.uk](http://trinitymarine.co.uk)

## DORSET

### ACE RECLAMATION

Traditional building and landscaping materials, architectural salvage, period interior pieces & garden antiques.

Pine View, Barrack Road, West Parley, Hurn, Dorset BH22 8UB

Tel +44 (0)1202 579222

[acereclamation.com](http://acereclamation.com)

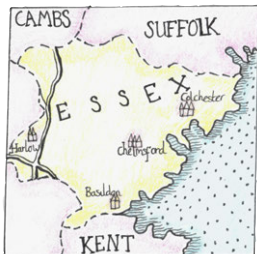
### DORSET RECLAMATION

Reclaimed building materials, architectural salvage, garden ornament, bathrooms, fireplaces. Restoration and rebuild of salvaged Aga cookers and ranges.

Cow Drove, Bere Regis, Wareham, Dorset BH20 7JZ

Tel +44 (0)1929 472200

[dorsetreclamation.co.uk](http://dorsetreclamation.co.uk)



## ESSEX

### ANTIQUE WOODEN FLOORS

Antique and reclaimed wooden flooring, parquet and wood block, wall and ceiling cladding.

Unit 5, Redhouse, Lower Dunton Road, Bulphan, Essex RM14 3TD

Tel +44 (0)7774 931217

[antiquewoodenfloors.co.uk](http://antiquewoodenfloors.co.uk)

### ANTIQUES BY DESIGN

Designing and recrafting decorative pieces with creative reuse of reclaimed items & salvaged materials.

Viewing by appointment: Woodham Mortimer, Nr Maldon,

Essex CM9 6TL

Tel +44 (0)7710 021010

[antiquesbydesign.co.uk](http://antiquesbydesign.co.uk)

### ASHWELLS RECLAIMED TIMBER

Specialists in tropical hardwood reclamation with an onsite sawmill to produce timber to your specification.

Wick Place Farm, Brentwood Road, Bulphan, Upminster, Essex RM14 3TL

Tel +44 (0)1375 892576

[ashwelltimber.com](http://ashwelltimber.com)

## Want to incorporate more reclaimed timber into your projects?

Watch Ashwells Reclaimed Timber at *Salvo Fest of Imperfect Beauty*, a four day celebration of reclamation and reuse. Ashwells contributes to **saving the equivalent of around 500 tonnes of CO<sub>2</sub>e annually** by its customers avoiding the need to fell greenheart and other forest trees.



SCAN ME

Register at [salvofair.com](https://salvofair.com) to find out about future events

## GLOUCESTERSHIRE

### ARCHITECTURAL HERITAGE

Purveyors of fine architectural antiques, garden ornament, sculpture, period interior panelling & bespoke stone fireplaces.

Taddington Manor, Gloucestershire GL54 5RY

Tel +44 (0)1386 584414

[architectural-heritage.co.uk](http://architectural-heritage.co.uk)

### RONSON RECLAIM

Architectural features, traditional reclaimed building materials, flagstones, bricks.

Upper Parting, Sandhurst Lane, Sandhurst, Gloucestershire GL2 9NQ

Tel +44 (0)1452 387890

[ronsonreclaim.com](http://ronsonreclaim.com)

### THE ORIGINAL ARCHITECTURAL ANTIQUES CO

Antique limestone, Cotswold fireplaces, stone troughs, old well heads, statuary and oak beams.

Ermin Farm, Cricklade Road, Cirencester, Gloucestershire GL7 5PN

Tel +44 (0)1285 869222

[originaluk.com](http://originaluk.com)

### WINCHCOMBE RECLAMATION

Quality reclaimed building materials where stone is sorted, bricks are cleaned, quoins are cut and roofs are put together to order.

Broadway Road Winchcombe, Cheltenham, Gloucestershire GL54 5NT

Tel +44 (0)1242 609564

[winchcombereclamation.co.uk](http://winchcombereclamation.co.uk)



*Winchcombe Reclamation*



## **GREATER MANCHESTER**

### **INSITU ARCHITECTURAL SALVAGE**

Architectural salvage and classic design pieces since 1984. Happy to source items if you have something special in mind.

252 Chester Road, Hulme, Manchester M15 4EX

Tel +44 (0)161 839 5525

[insitumanchester.com](http://insitumanchester.com)

### **PINE SUPPLIES**

Reclaimed timber, beams, flooring re-machined, skirting, architrave, window sections and doors.

Lower Tongs Farm, Longshaw Ford Road, Smithills, Bolton, Lancashire BL1 7PP

Tel +44 (0)1204 841416

[pine-supplies.co.uk](http://pine-supplies.co.uk)

### **RECLAIMED FLAGSTONE**

Reclaimed Yorkshire flagstones, stone and granite kerbs, cobblestones and setts.

Area E, Bamber's Quay, Anderton Street, Wigan,

Greater Manchester WN2 2BG

Tel +44 (0)1942 678070

[reclaimedflagstonesltd.co.uk](http://reclaimedflagstonesltd.co.uk)

## **HAMPSHIRE**

### **COMLEY DEMOLITION**

Demolition services - see sister company **Comley Reclaim** for their salvaged materials.

Southern Way, Rye Common, Odiham, Hook, Hampshire RG29 1HU

Tel +44 (0)1256 702178

[comleydemolition.co.uk](http://comleydemolition.co.uk)

### **ROMSEY RECLAMATION**

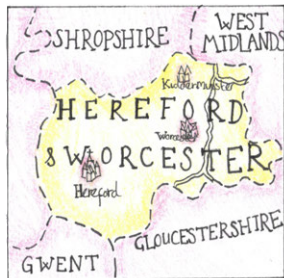
Reclaimed railway sleepers, bricks, tiles, slates, timber, flagstones and architectural salvage.

Oak Tree Farm, Dunbridge Lane, Awbridge Romsey,

Hampshire SO51 0GQ

Tel +44 (0)1794 342252

[romseyreclamation.com](http://romseyreclamation.com)



## HEREFORD & WORCS

### ENGLISH SALVAGE

Architectural antiques, salvage, lighting, bygones, garden ornament & decorative architectural building materials.

North Road, Leominster, Herefordshire  
HR6 0AB

Tel +44 (0)1568 616205

[englishsalvage.co.uk](http://englishsalvage.co.uk)

### WAREHOUSE 701

Decorative salvage and homewares. Architectural antiques, reclaimed building materials, interior features & landscaping supplies.

Fordshill Road, Rotherwas Ind Est, Hereford HR2 6NS

Tel +44 (0)1432 375510

[warehouse701.co.uk](http://warehouse701.co.uk)

## HERTFORDSHIRE

### ARCHITECTURAL FORUM

Truly Reclaimed architectural antiques, original cast iron radiators, antique chimneypieces, reclaimed flooring, antique & recrafted furniture.

Ware House open by appointment: Marsh Lane, Ware,  
Hertfordshire SG12 9QQ

Tel +44 (0)20 7704 0982

[thearchitecturalforum.com](http://thearchitecturalforum.com)

### ARCHITECTURAL SALVAGE SOURCE

Offering stocks of reclaimed bricks, Yorkstone flags, timber flooring, architectural salvage and garden antiques.

Willows Farm Village, Coursers Road, London Colney, St Albans,  
Hertfordshire AL2 1BB

Tel +44 (0)7960 351141

[archsource.co.uk](http://archsource.co.uk)

### HERITAGE RECLAMATION

Reclaimed flooring & bespoke joinery.

14 Wood Lane, Paradise Industrial Estate, Hemel Hempstead HP2 4TL

Tel +44 (0)1442 219936

[heritagereclamation.co.uk](http://heritagereclamation.co.uk)

## **SKYLINE RECLAMATION**

Reclaimed roofing slates and roof tiles carefully inspected and crated.

The Nap, Kings Langley Hertfordshire WD4 8ES

Tel +44 (0)192 326 2620

Wiggenhall Industrial Estate, Wiggenhall Road, Watford,  
Hertfordshire WD18 0FL

Tel +44 (0)0192 322 6726

[skylineroofing.co.uk](http://skylineroofing.co.uk)

## **V&V RECLAMATION**

Architectural salvage, reclaimed building materials, antique doors, salvaged bathroom fittings, garden ornament and furniture.

Tree Heritage, North Road,  
Hertford, Hertfordshire

SG14 2PW

Tel +44 (0)1992 550941

[vandv.co.uk](http://vandv.co.uk)



*V&V Reclamation*

## **KENT**

### **ANTIQUE OAK FLOORING CO**

Truly Reclaimed timber. Antique and reclaimed wood flooring & cladding with specialist advice on suitability, installation and finishing.

Willow Court Farm, Bilsington Road, Ruckinge, Ashford, Kent TN26 2PB

Tel +44 (0)7733 263540

[reclaimedflooring.co.uk](http://reclaimedflooring.co.uk)

### **CATCHPOLE & RYE**

Antique sanitaryware, baths, basins, taps, WCs, enamellers, restorers and fine quality reproductions

Viewing by appointment only: Saracens Dairy, Pluckley Rd, Ashford, Kent  
TN27 0SA

Tel +44 (0)1233 840840

Viewing by appointment only: 282-284 Fulham Road, London SW10 9EW

Tel +44 (0)20 7351 0940

[catchpoleandrye.com](http://catchpoleandrye.com)

## **SYMONDS SALVAGE**

Reclaimed building materials & garden items. Original shepherd's huts or huts made to order using high spec reclaimed materials.

Colts Yard, Pluckley Road, Bethersden, Nr Ashford, Kent TN26 3DD

Tel +44 (0)1233 820724

[symondssalvage.co.uk](http://symondssalvage.co.uk)

## **LANCASHIRE**

### **CHILTON CHURCH ANTIQUES**

Restorers and suppliers of antique church furniture; pews, chapel chairs, pulpits, lighting, lecterns, organs & recrafted tables

Viewing by appointment only: Unit 2 Blainscough Lane, Chorley, Lancashire PR7 5HT

Tel +44 (0)1257 470150

[antiquechurchfurniture.co.uk](http://antiquechurchfurniture.co.uk)

## **LONDON**

### **DEJA WOOD**

Suppliers of reclaimed wooden parquet floors.

Viewing by appointment only: South East London

Tel +44 (0)7464 433185

[woodjob.co.uk](http://woodjob.co.uk)

### **LONDON RECLAIMED BRICK MERCHANTS**

Reclaimed bricks and natural stone. Demolitions, large or small, take a stringent attitude to health and safety. Brick matching service available.

Unit 2 The Bridgeworks, Iver Lane, Uxbridge, London UB8 2LG

Tel +44 (0)20 8452 1111

[lrbm.com](http://lrbm.com)



*London Reclaimed Brick Merchants*

### **NICHOLAS GIFFORD-MEAD ANTIQUES**

Fine seventeenth, eighteenth and nineteenth century chimneypieces, associated fire furniture and garden sculpture.

Viewing by appointment only: London

Tel +44 (0)207 736 0808

[nicholasgiffordmead.co.uk](http://nicholasgiffordmead.co.uk)

### **RECLAIMED LTD**

Reclaimed wooden flooring, joinery timber manufacturers and suppliers. Bespoke service.

Sewardstone Hall Farm, Sewardstone Road, Chingford, London E4 7RH

Tel +44 (0)20 8529 8504

[reclaimed.uk.com](http://reclaimed.uk.com)

### **RETROUVIUS**

Salvage company and design studio. Tropical hardwoods, architectural elements, eye-catching one-offs, rugs and lighting.

Viewing by appointment only:

1016 Harrow Road,

London NW10 5NS

Tel +44 (0)20 8960 6060

[retrouvius.com](http://retrouvius.com)



*Retrouvius*

### **SKYLINE RECLAMATION**

Reclaimed roofing slates and roof tiles carefully inspected and crated.

Head office (with multiple branches in Greater London)

Unit 73 Waterside Trading Centre, Trumpers Way, Hanwell,

Ealing W7 2QA

Tel +44 (0)1923 226726

[skylineroofing.co.uk](http://skylineroofing.co.uk)

### **WESTLAND LONDON**

Antique chimneypieces from the 15th to the early 20th century, fireplace accessories, fine furniture, lighting, decorative & architectural antiques.

295 Willesden lane, London NW2 5HY

Tel +44 (0)20 7739 8094

[westlandlondon.com](http://westlandlondon.com)

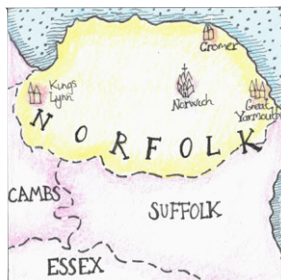
## NORFOLK

### MONGERS ARCHITECTURAL SALVAGE

Architectural antiques, period  
bathrooms and sanitaryware,  
reclaimed timber, cast iron radiators,  
fireplaces, doors & accessories.  
15 Market Place, Hingham,  
Norfolk NR9 4AF

Tel +44 (0)1953 851868

[mongersofhingham.co.uk](http://mongersofhingham.co.uk)



### MOONEY DEMOLITION CO

Reclamation yard and demolition services. Reclaimed bricks, roofing,  
flooring, flagstones.

Newgate House, Gypsy Lane, Hockering, Dereham, Norfolk NR20 3RS

Tel +44 (0)1603 881401

[mooneydemolition.co.uk](http://mooneydemolition.co.uk)



*Morways Reclaimers*

### MORWAYS RECLAIMERS

Architectural salvage, reclaimed  
timber and heritage building  
materials reclaimed around  
Norfolk and beyond.

Old Station Yard, Watton Road,  
Stow Bedon, Attleborough.

Norfolk NR17 1DP

Tel +44 (0)1953 483914

[morways.co.uk](http://morways.co.uk)

### REAL ORIGINAL

Architectural salvage, decorative and garden antiques, bygones, vintage,  
retro and recrafted furniture.

Tel +44 (0)7894 866490

[realoriginal.co.uk](http://realoriginal.co.uk)





## NORTHAMPTONSHIRE

### WATLING RECLAMATION

Architectural antiques and salvage. From landscaping & reclaimed building materials to garden ornament and interior items. The Old Pump House, Cuttle Mill Business Park, Watling Street, Nr. Towcester, Northamptonshire NN12 6LF  
Tel +44 (0)1327 811888  
[watlingreclamation.co.uk](http://watlingreclamation.co.uk)

## OXFORDSHIRE

### LASSCO THREE PIGEONS

Architectural salvage, garden ornament, decorative antiques, bygones, and a plaster cast collection made in their workshop.

London Road, Milton Common, Oxfordshire OX9 2JN

Tel +44 (0)1844 277188

[lassco.co.uk](http://lassco.co.uk)



*LASSCO Three Pigeons*

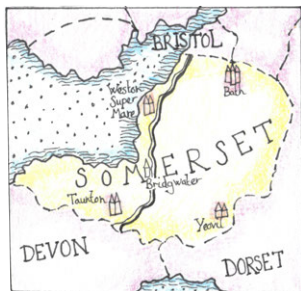
## SHROPSHIRE

### THE OLD YARD

Antique and vintage furniture, lighting, garden and decorative. Architectural pieces including reclaimed Crittall windows & doors. Viewing by appointment only: 5 Wootton Cottages, Queenshead, Oswestry, Shropshire SY11 4LJ

Tel +44 (0)7871 734500

[theoldyard.co.uk](http://theoldyard.co.uk)



## SOMERSET

### BATH RECLAMATION

Traditional building materials; reclaimed bricks, flagstones, roof tiles, walling stone and reclaimed flooring.

Home Farm Yard, Newton St Loe, Bath BA2 9DA

Tel +44 (0)7983 556 757  
[bathreclamation.co.uk](http://bathreclamation.co.uk)

### NATURAL STONE CONSULTING

Antiqued and reclaimed natural stone floors, reclaimed terracotta tiles, granite, setts, York cobbles.

Viewing by appointment only: Unit 4 Ebdon Road, Wick Street, Lawrence, Somerset BS22 9NZ

Tel +44 (0)333 444 8899  
[naturalstoneconsulting.co.uk](http://naturalstoneconsulting.co.uk)

### RECLAIMED RADIATORS

Specialists in the restoration and supply of antique and vintage radiators. Professionally hand painted ready for installation.

Whatley House, Unit 2 Combe, Frome BA11 3JU

Tel +44 (0)7540 978408  
[reclaimedradiators.co.uk](http://reclaimedradiators.co.uk)



*Reclaimed Radiators*

## **SOUTH WEST RECLAMATION**

Reclaimed Bridgwater roof tiles and traditional renovation materials. Bricks, doors, floorboards, fireplaces, woodburning stoves, bespoke cut slate hearths. Wireworks Estate, Bristol Road, Bridgwater, Somerset TA6 4AP  
Tel +44 (0)1278 444141  
[southwest-rec.co.uk](http://southwest-rec.co.uk)



*South West Reclamation*

## **SIMON WHARTON ANTIQUES**

Antique French fireplaces and stone chimneypieces, decorative, garden and architectural antiques.  
Viewing by appointment only: Somerset  
Tel +44 (0)7974 579694  
[whartonantiques.com](http://whartonantiques.com)

## **STAFFORDSHIRE**

### **CAWARDEN**

Specialists in the supply of reclaimed building materials and architectural salvage.  
Cawarden Springs Farm, Blithbury Road, Rugeley,  
Staffordshire WS15 3HL  
Tel +44 (0)1889 574066  
[cawardenreclaim.co.uk](http://cawardenreclaim.co.uk)

### **UK ARCHITECTURAL ANTIQUES**

Architectural and garden antiques and building materials. Church furnishings, post boxes, butchers blocks and bespoke items.  
Hill Farm, 84 Hayfield Hill, Rugeley, Staffordshire WS15 4RU  
Tel +44 (0)1543 222923  
[ukaa.com](http://ukaa.com)



## SUFFOLK

### 3A ROOFING

Roofing contractors with expertise in heritage buildings. The yard offers stocks of reclaimed roof tiles, slates & bricks.

The Laurels, Copdock, Ipswich IP8 3JF

Tel +44 (0)1473 730666

[3aroofing.co.uk](http://3aroofing.co.uk)

### AB RECLAMATION

Architectural salvage and reclamation centre offering reclaimed building materials, garden antiques & salvaged period features. The Barn, Block Farm, Bradfield Combust, Bury St Edmunds, Suffolk IP30 0LW

Tel +44 (0)1284 828081

[abreclamation.co.uk](http://abreclamation.co.uk)

### TOWER RECLAIM

Reclaimed building materials, oak beams, bricks, flooring, roof tiles, stone paving and oak frames.

Viewing by appointment only: Tower Farm, Norwich Road, Mendlesham, Suffolk IP14 5NE

Tel +44 (0)1449 766095

[tower-reclaim.co.uk](http://tower-reclaim.co.uk)

### TREESAVE RECLAMATION LTD

Period reclaimed building materials and architectural salvage, original flooring, oak beams, doors, bricks, tiles and slates.

Fysh House, Cuckoo Hill, Bures, Suffolk CO8 5LD

Tel +44 (0)1787 227272

[treesave.co.uk](http://treesave.co.uk)

## SURREY

### ANTIQUE BUILDINGS

Ancient oak-framed buildings, also oak beams, bricks, dismantled barn frames & wide oak conservation quality floorboards.

Dunsfold, Godalming,

Surrey GU8 4NP

Tel +44 (0)1483 200477

[antiquebuildings.co.uk](http://antiquebuildings.co.uk)



*Antique Buildings*

### CAST IRON RECLAMATION CO

Architectural salvage and antiques, also see sister company **Vintage Fridge Co** for ice boxes and vintage refrigerators.

Viewing by appointment only: Hazeldene Farm, Ockham Lane, Cobham, Surrey KT11 1LW

Tel +44 (0)7813 293866

[castironreclamation.com](http://castironreclamation.com)

### COMLEY RECLAIM

Reclaimed building and landscaping materials, doors and fireplaces salvaged by sister company **Comley Demolition**

70 Wrecclesham Hill, Farnham, Surrey GU10 4JX

Tel +44 (0)1252 716882

[comleyreclaim.co.uk](http://comleyreclaim.co.uk)

### SKYLINE RECLAMATION

Reclaimed roofing slates and roof tiles carefully inspected and crated.

29-31 Stonecot Hill, Cheam Surrey SM3 9HH

Tel +44 (0)20 8644 7600

[skylineroofing.co.uk](http://skylineroofing.co.uk)

## **VINTAGE FRIDGE COMPANY**

Specialising in the refurbishment and supply of original “Ice Box” and vintage refrigerators, also see sister company **Cast Iron Reclamation Co.**

Viewing by appointment only: Hazeldene Farm, Ockham Lane, Cobham, Surrey KT11 1LW

Tel +44 (0)7813 293866

[thevintagefridgecompany.com](http://thevintagefridgecompany.com)

## **WOODLANDS FARM NURSERY & RECLAMATION**

Reclaimed landscape & building materials. York flagstones, bricks, walling stone, rockery stone, garden ornament & antiques.

The Green, Wood Street Village, Surrey GU3 3DU

Tel +44 (0)7774 741 321

[woodlandsfarmreclamation.co.uk](http://woodlandsfarmreclamation.co.uk)

## **WOODSTONEUK**

Specialising in reclaimed and new flooring. Shopfittings, bygones, furniture, lighting, vintage and industrial finds.

Viewing by appointment only: Windlesham, Surrey

Tel +44 (0)7785 288 544

[woodstoneuk.com](http://woodstoneuk.com)

## **TYNE AND WEAR**

### **OLDE WORLDE FIREPLACES**

Antique fireplaces, surrounds and kitchen ranges including Victorian, Edwardian, Georgian, and Arts & Crafts fireplaces.

18 Blandford Square, Newcastle upon Tyne NE1 4HZ

Tel +44 (0)191 261 9229

[olde-worlde-fireplaces.co.uk](http://olde-worlde-fireplaces.co.uk)



*Olde World Fireplaces*



## WARWICKSHIRE

### WARWICK RECLAMATION

Traditional reclaimed building materials & architectural antiques. Timber flooring, oak & elm beams, period fireplaces, bespoke doors and hardware.

Harbury Lane, Bishops Tachbrook,  
Leamington Spa CV33 9SA

Tel +44 (0)1926 881539

[warwickreclamation.co.uk](http://warwickreclamation.co.uk)



### COVENTRY DEMOLITION CO

Reclaimed & reproduction products specialising in the supply of cast iron radiators and door furniture.

Ryton Fields Farm, Wolston Lane, Ryton on Dunsmore,  
Coventry CV8 3ES

Tel +44 (0)808 196 3734

[coventry-demolition.co.uk](http://coventry-demolition.co.uk)

## WEST SUSSEX

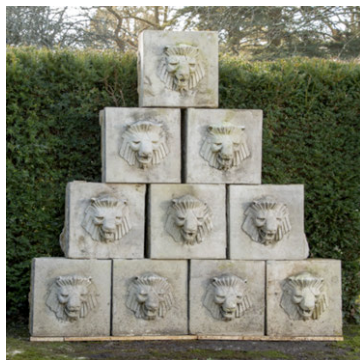
### SUMMERS PLACE AUCTIONS

Regular auctions of garden statuary, architectural ornament, and natural history.

Summers Place, Billingshurst,  
West Sussex RH14 9AD

Tel +44 (0)1403 331331

[summersplaceauctions.com](http://summersplaceauctions.com)



*Summers Place Auctions*

## YORKSHIRE



*Abacus Stone Sales*

### **ABACUS STONE SALES**

Suppliers of reclaimed and new Yorkshire flagstones, walling stone, cobbles & roof slates.

Hagg Wood Quarry, Woodhead Rd, Holmfirth, Huddersfield, West Yorkshire HD9 6PW

Tel +44 (0)7711 997026

[abacusstonesales.co.uk](http://abacusstonesales.co.uk)

### **RECLAIMED BRICK COMPANY**

Reclaimed building & landscaping materials. Brick matching and in-house equipment to offer safe, effective demolition services.

Clifton Works, Hillfoot Road, Sheffield, Yorkshire S3 8AA

Tel +44 (0)77175 398488

[reclaimedbrickcompany.co.uk](http://reclaimedbrickcompany.co.uk)

### **TEESSIDE ARCHITECTURAL SALVAGE**

Reclaimed internal fixtures & fittings, church salvage and reclaimed renovation materials.

Viewing by appointment only: Unit 5 Robert Street, Thornaby Stockton-on-Tees TS17 6AN

Tel +44 (0)7738 402953

[teessidearchitecturalsalvage.co.uk](http://teessidearchitecturalsalvage.co.uk)



## SCOTLAND



*Tradstocks*

### **TRADSTOCKS**

Quarrying, cutting and supplying natural stone, kerbs, setts, stone steps, coping, walling, paving and reclaimed stone features.

Viewing by appointment only:

#### **Tradstocks Westwood**

Five Sisters Business Park,  
Westwood, Livingston  
EH55 8PN

Tel +44 (0)1506 873081

#### **Tradstocks Thornhill**

Dunaverig Thornhill, Stirling  
FK8 3QW

Tel + 44 (0)1786 850400

[tradstocks.co.uk](http://tradstocks.co.uk)

## NORTHERN IRELAND

### **WILSONS YARD**

Architectural antiques, salvage and design business with both structural and decorative products. Bespoke kitchens and joinery.

123 Hillsborough Road,  
Dromore, Co Down,  
Northern Ireland BT25 1QW  
Tel +44 (0)28 9269 2304

[wilsonsyard.com](http://wilsonsyard.com)



*Wilsons Yard*

## FRANCE

### **B.C.A. MATÉRIAUX ANCIENS**

Ambassadors for Truly Reclaimed.  
Fine antique materials and  
architectural salvage, exporting  
worldwide.

[bca-antiquematerials.com](http://bca-antiquematerials.com)

Head office: Route de Craon -  
l'Hôtellerie-de-Flée, 49500 Segré en  
Anjou Bleu, France

English speakers

Tel +33 (0)6 07 01 90 26

Clients Français

Tel +33 (0)2 41 61 62 40

BCA Matériaux Anciens, RN 13 – 4 Avenue de Paris, 14370 Méry-Corbon,  
France. Clients Français Tel +33 (0)2 31 23 95 87

Coming soon...

BCA Matériaux Anciens, 2 Impasse de l'Environnement,  
14130 Pont-l'Évêque, France



*BCA Matériaux Anciens*



*Antique Floors*

## LUXEMBOURG

### **ANTIQUE FLOORS**

Bespoke wood creations specialising  
in reclaimed and aged flooring and  
panels crafted in the traditional way.

6 Rue des Artisans, L-3895 Foetz,  
Luxembourg

Tel +352 263 133 58

[antiquesfloors.eu](http://antiquesfloors.eu)



*Pierre de Bourgogne*

## ITALY

### **PIERRE DE BOURGOGNE**

Quality antique floors specialising in Dalles de Bourgogne 16th - 17th century, exporting worldwide.

Via G.B.Vico 63, Forte dei Marmi, Toscana 55042, Italy

Tel +39 3389482831

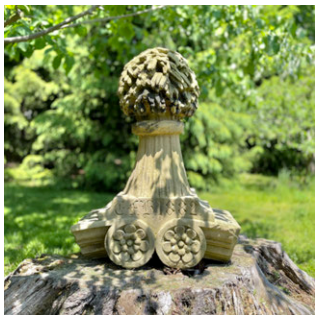
[pierredebourgogne.com](http://pierredebourgogne.com)

## UNITED STATES

### **BARBARA ISRAEL GARDEN ANTIQUES**

Fine antique garden ornament from Europe and America in a beautiful sculpture garden. Viewing by appointment only: New York, USA  
Tel +1 212 744 6281

[bi-gardenantiques.com](http://bi-gardenantiques.com)



*Barbara Israel Garden Antiques*



**SALVO  
CODE**

**Want to be listed in the  
next Salvo Pocket Guide?**

Get in touch [shirley@salvo.co.uk](mailto:shirley@salvo.co.uk)

DATES	BRITISH Monarchs	PERIODS
1558 - 1603	Elizabeth I	Elizabethan
1603 - 1625	James I	Jacobean
1625 - 1649	Charles I	Carolean
1649 - 1660	Commonwealth	Commonwealth
1660 - 1685	Charles II	Restoration
1685 - 1689	James II	Restoration
1689 - 1694	William II & Mary II	William & Mary
1694 - 1702	William III	William III
1702 - 1714	Anne	Queen Anne
1714 - 1727	George I	Early Georgian
1727 - 1760	George II	Mid Georgian
1760 - 1811	George III	Late Georgian
1811 - 1820	Prince Regent	Regency
1820 - 1830	George IV	Regency
1830 - 1837	William IV	Late Regency
1837 - 1901	Victoria	Victorian
1901 - 1910	Edward VII	Edwardian
1910 - 1936	George V	Early twentieth century
1936	Edward VIII	Mid-twentieth century
1936 - 1952	George VI	Mid-twentieth century
1952 - 2022	Elizabeth II	New Elizabethan Era
2022 - Present	Charles III	New Carolean Era



*Left: Antique coat of arms in the Salvo shop from UKAA*



**DATES**

1589 - 1610

1610 - 1643

1643 - 1715

1715 - 1774

1774 - 1792

1792 - 1795

1795 - 1799

1799 - 1804

1804 - 1814

1814 - 1824

1824 - 1830

1830 - 1848

1848 - 1852

1852 - 1870

**FRENCH Monarchs**

Henri IV

Louis XIII

Louis XIV

Louis XV

Louis XVI

Louis XVIII

Charles X

Louis Phillipe

Napoleon III

**PERIODS**

Bourbon Dynasty

Bourbon Dynasty

Bourbon Dynasty

Bourbon Dynasty

Bourbon Dynasty

First Republic

Directoire

Consulate

First Empire

Bourbons

Bourbons

Orleans

Second Republic

Second Empire

**DATES**

1620s - 1690s

1690s - 1720s

1720s - 1750s

1750s - 1780s

1780s - 1820s

1820s - 1840s

1830s - 1900s

1870s - 1920s

**U.S. styles and furniture periods**

Jacobean or Pilgrim

William &amp; Mary

Queen Anne

Chippendale

Federal

Classical

Victorian

US Craft Revival

## DESIGN MOVEMENTS

It is difficult to confine movements to a date, but here is our go at a guide.

1837 - 1901

1835 - 1870

1850 - 1915

1860 - 1900

1880 - 1910

1880 - 1940

1901 - 1910

1910 - 1945

1910 - 1940

1919 - 1933

1930 - 1950

1930 - 1960 & 1990 - Present

1935 - Present

1945 - 1960

1958 - 1972

1960 - 1969

1967 - 1978

1978 - Present

1981 - 1987

1988 - Present

Victorian

Gothic Revival

Arts & Crafts

Aesthetic

Art Nouveau

Modernism

Edwardian

Futurism

Art Deco

Bauhaus

Streamlining

Organic Design

Scandinavian Modern

Contemporary

Pop Art

Space Age

Minimalism

Postmodernism

Memphis

Deconstructivism

**Seasoned dry wood    Density kg/m<sup>3</sup>**

Apple	650 - 850
Bamboo	310 - 400
Beech	700 - 900
Birch	510 - 770
Box	950 - 1160
Cedar	490 - 570
Chestnut	560
Douglas Fir	530
Ebony	1110 - 1330
Elm	550 - 600
Greenheart	1040
Jarrah	820
Keruing	740
Mahogany	500 - 850
Maple	620 - 750
Oak	600 - 900
Opepe	750
Red Pine	450
White Pine	350 - 500
Yellow Pine	420
Pitch Pine	830 - 850
Teak	660 - 980
Walnut	640 - 700

**METRIC CONVERTER**

1 in	2.5cm
1 ½ in	3.8cm
2in	5.1cm
2½ in	6.3 cm
3in	7.6cm
3½ in	8.9cm
4in	10.1cm
4½ in	11.4cm
5in	12.7cm
5½ in	13.4cm
6in	15.2cm
6½ in	16.5cm
7in	17.8cm
7½ in	19cm
8in	20.3cm
8½ in	21.6cm
9in	22.9cm
9½ in	24.1cm
10 in	25.4cm
10½ in	27cm
11in	27.9cm
11½ in	29.2cm
1foot	30.5cm

**OLD MEASURES**

3 barleycorns	1 inch
5 ½ yards	1 rod, pole or perch
22 yards	1 chain
40 rods	1 furlong
10 chains	1 furlong
8 furlongs	1 mile
1 English mile	1760 yards

**WEIGHT**

16 drams	1 ounce
16 ounces	1 pound (lb)
2.2 lbs	1 kilogram
14 lbs	1 stone
2240 lbs	1 ton
1 ton	1 metric tonne



# ANTIQUES BY DESIGN

A Sustainable Company



Lampshades

## UPCYCLE



Lighting



## RECYCLE



Furniture



Mirrors

## RECRAFT



## REUSE



**[www.antiquesbydesign.co.uk](http://www.antiquesbydesign.co.uk)**

Guy Chenevix-Trench

Artisan on the BBC programme 'Money for Nothing'

email [guytrench@icloud.com](mailto:guytrench@icloud.com)

@antiques\_by\_design

Essex Headquarters

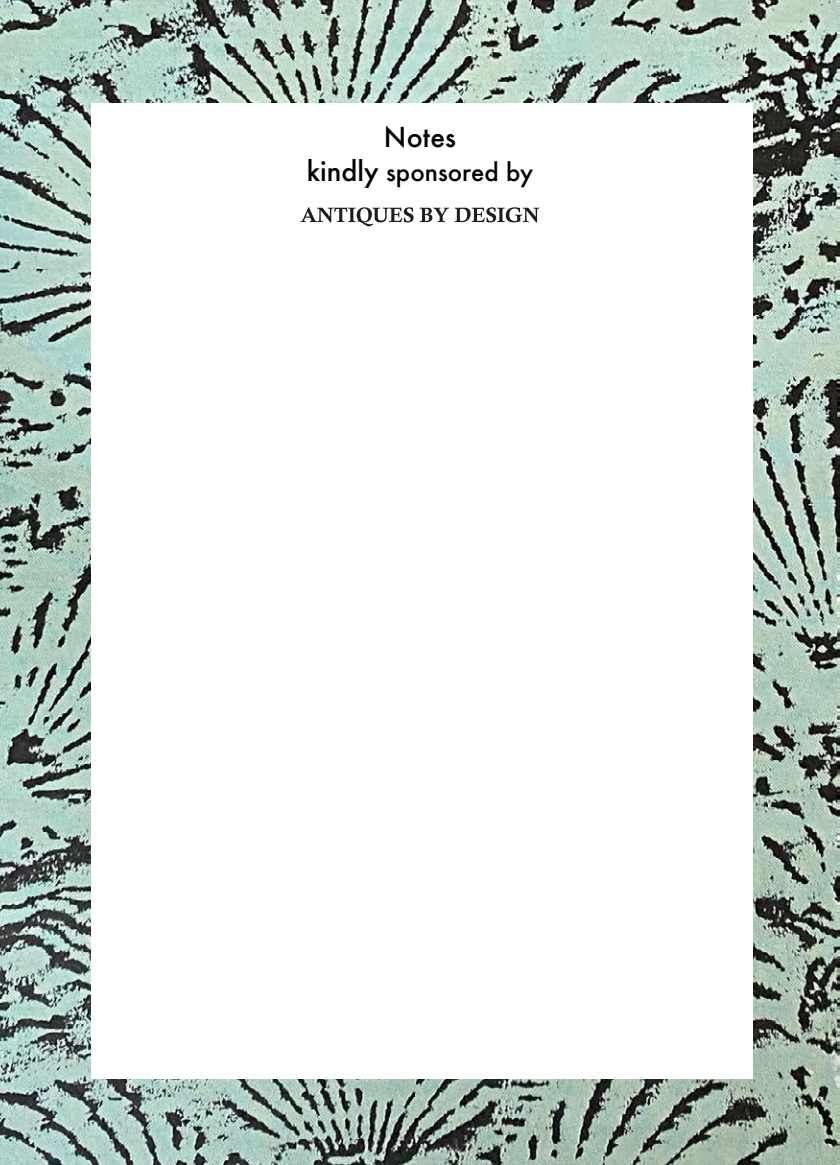
01245 222 771

07710 021 010

London Showroom

The Old Cinema

020 8995 4166



Notes  
kindly sponsored by  
ANTIQUES BY DESIGN



SCAN ME

Subscribe to SalvoNEWS  
to receive the digital  
guide & reuse stories to  
inspire your projects



[SalvoWEB.com](http://SalvoWEB.com)